

This map was prepared for Assessment & Taxation purposes only and was NOT prepared nor is it suitable for legal, engineering or surveying purposes.

NW1/4 SW1/4 SEC 9 T2N R32E WM UMATILLA COUNTY

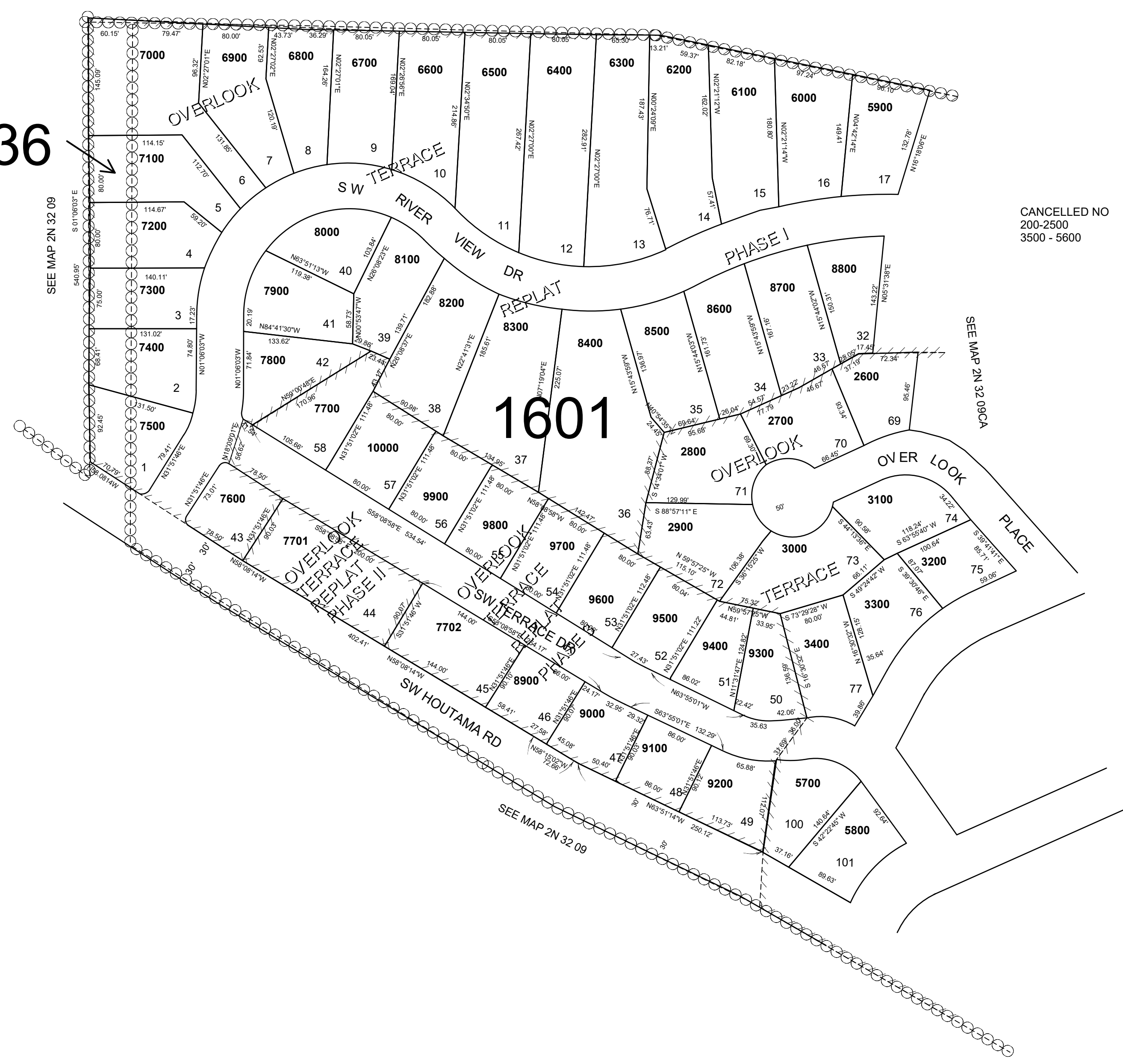
1"=100'

2N 32 09CB

AERIAL PHOTO NO NZ-4P-104

SEE MAP 2N 32 09

1636



CANCELLED NO
200-2500
3500 - 5600

REVISED: 04-08-2021

2N 32 09CB