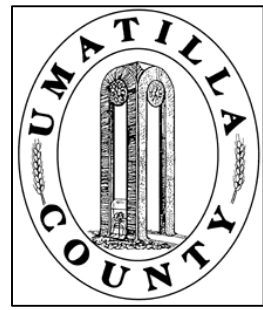


This map was prepared for Assessment & Taxation purposes only and was NOT prepared nor is it suitable for legal, engineering or surveying purposes.

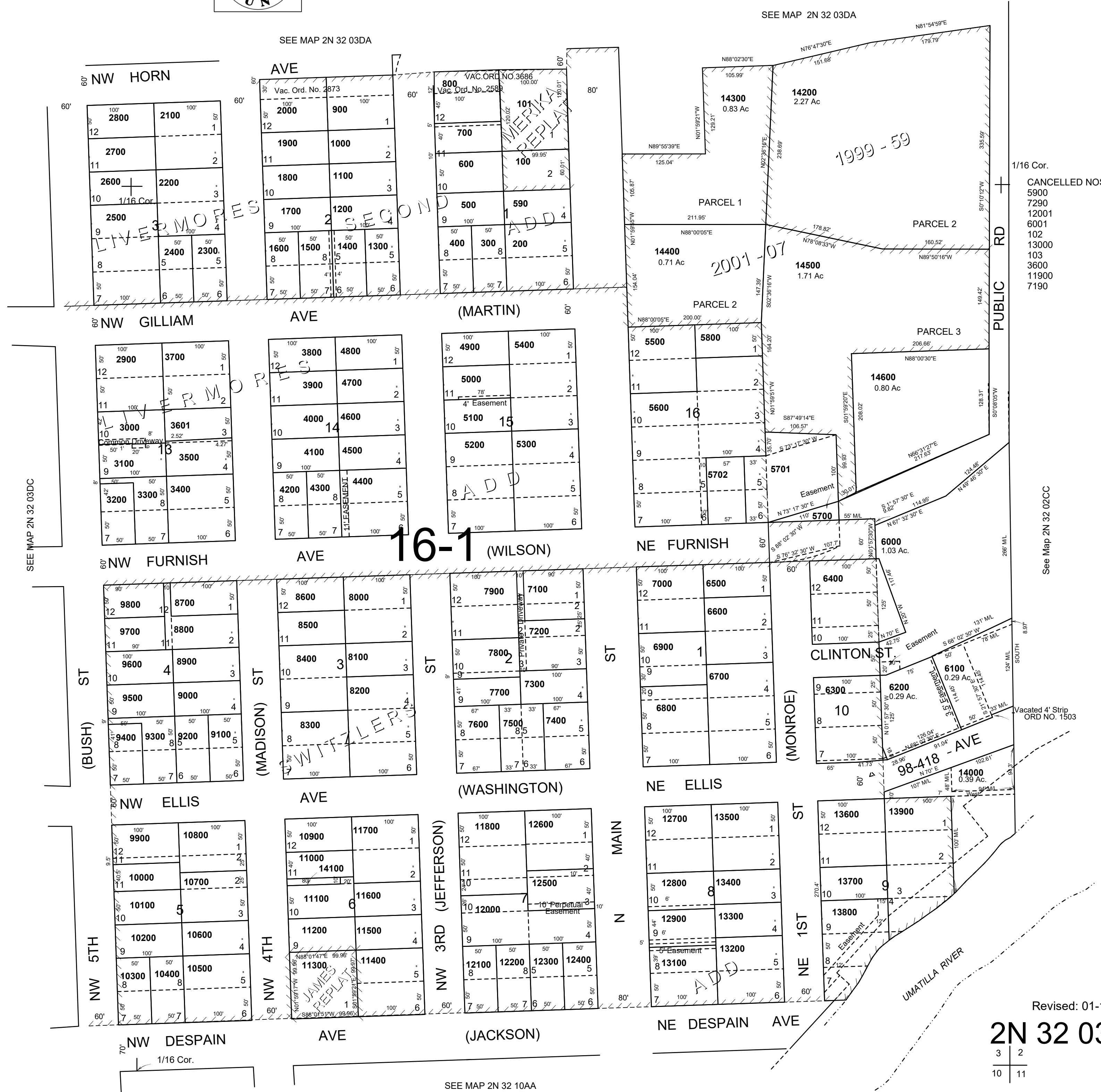


# SE1/4 SE1/4 SEC 3 T 2N R 32E WM UMATILLA COUNTY

SCALE: 1" = 100'

## 2N 32 03DD

AERIAL PHOTO NO. NZ-4P-103



## 2N 32 03DD

3	2
10	11