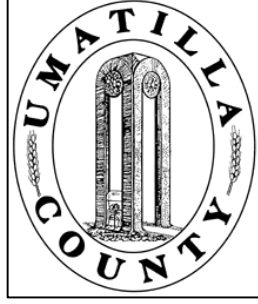


This map was prepared for Assessment purposes only.



SE 1/4 SW 1/4 SEC 3 T2N R32E WM  
UMATILLA COUNTY, OR

10/21/04

SCALE: 1" = 100'

2N3203CD

Pendleton  
Coles Add  
Brown Courts Add  
Blks A-F, Lts 5-16 Blk D  
Irvington Heights  
Brown Courts Replat No 2  
of Block A

Aerial Photo No. 4P-103  
1/16 Cor.

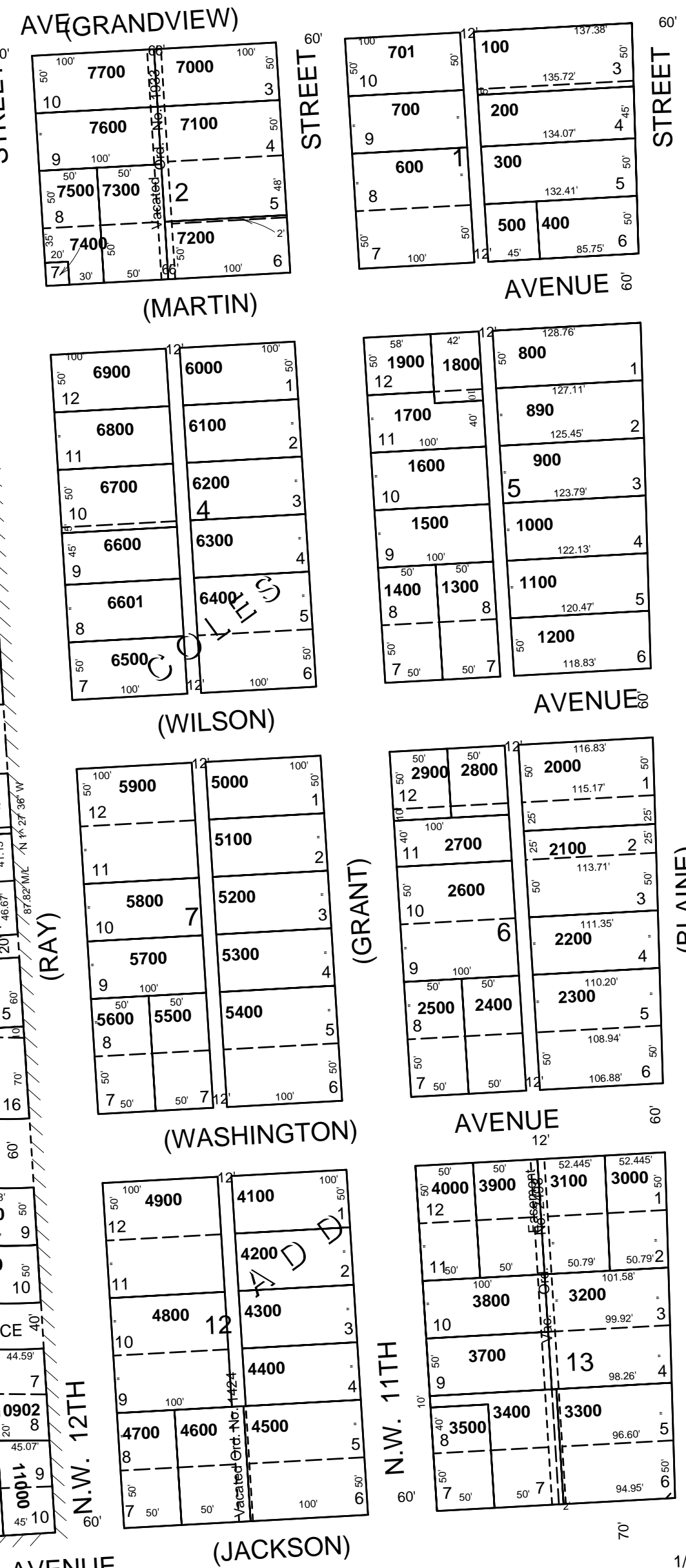
See Map 2N 32 03CA



See Map 2N 32 03

See Map 2N 32 10BA

1414 13 East & the SW Cor. Sec. 3



CANCELLED  
9491  
3600  
3301  
11701  
9492  
11703  
10201  
10701  
11704  
10800

See Map 2N 32 03DC

2N3203CD