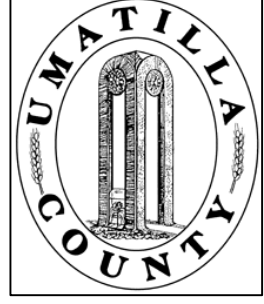


This map was prepared for Assessment & Taxation purposes only and was NOT prepared nor is it suitable for legal, engineering or surveying purposes.

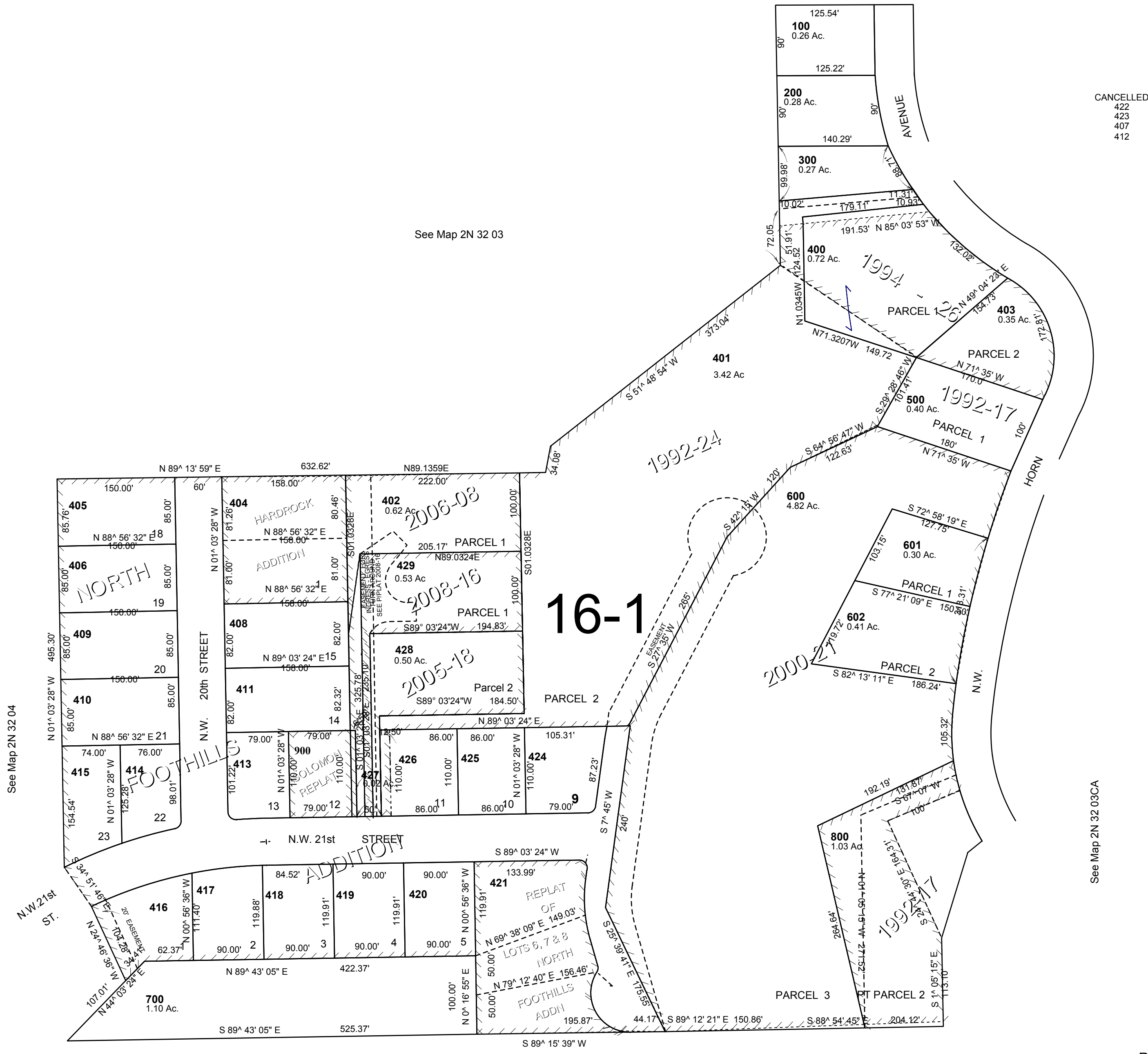


NW 1/4 SW1/4 SEC 3 T2N R32E WM UMATILLA COUNTY

2N3203CB

AERIAL PHOTO NO NZ-4P-103

SCALE: 1" = 100'



CANCELLED
422
423
407
412

See Map 2N 32 03CA

REVISED: 6/18/08

2N3203CB