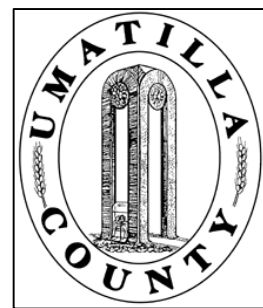


This map was prepared for Assessment & Taxation purposes only and was NOT prepared nor is it suitable for legal, engineering or surveying purposes.

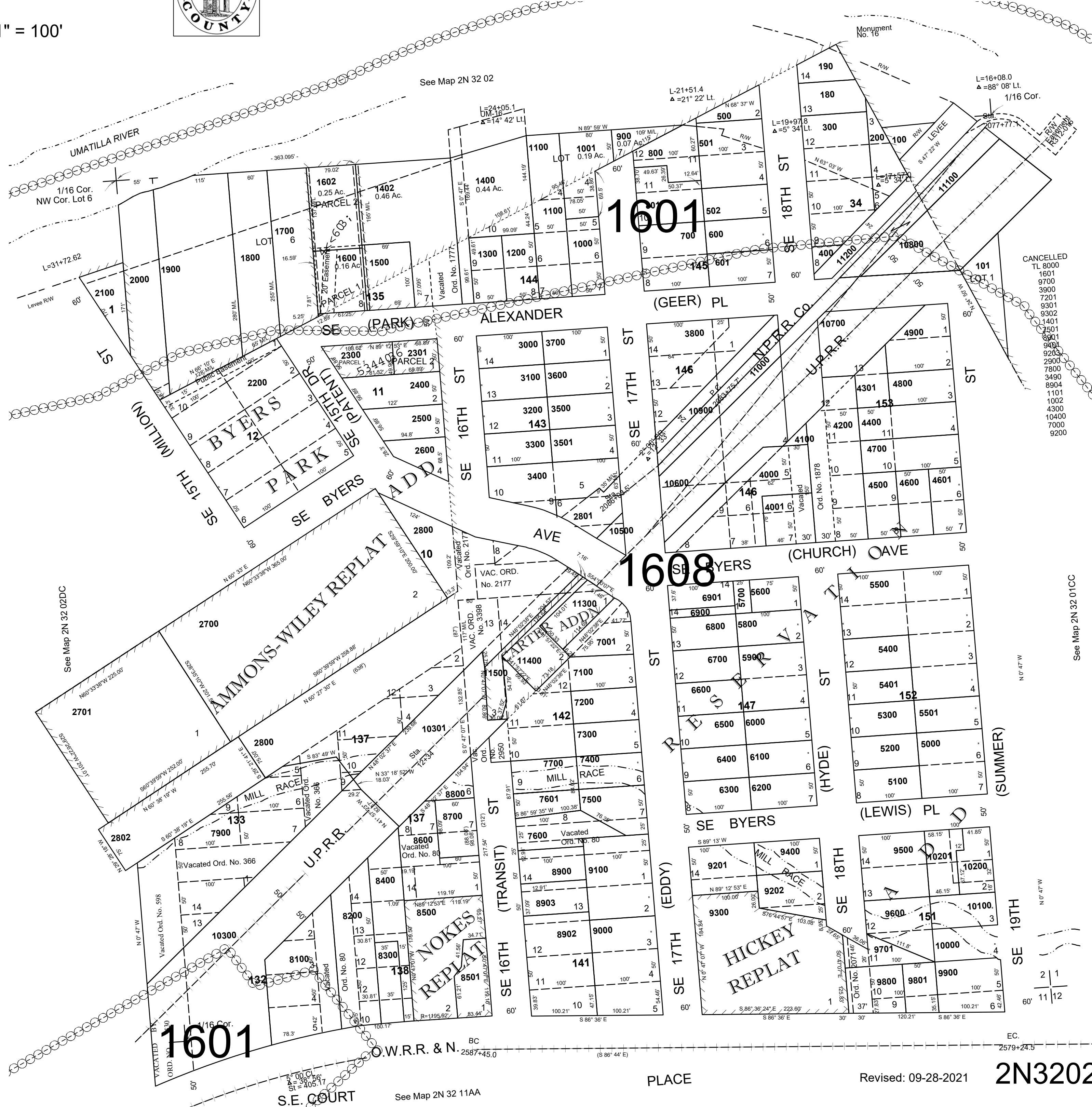


SE1/4 SE1/4 SEC 2 T2N R32E WM
UMATILLA COUNTY

2N3202DD

AERIAL PHOTO NO NZ-4P-103

SCALE: 1" = 100'



- CANCELLED
- TL 8000
- 1601
- 9700
- 3900
- 7201
- 9301
- 9302
- 1401
- 1501
- 8901
- 9400
- 9200
- 2900
- 7800
- 3490
- 8904
- 1101
- 1002
- 4300
- 10400
- 7000
- 9200

See Map 2N 32 01CC

2 1
11 12

EC.

2579+24.5

S.E. COURT

See Map 2N 32 11AA

PLACE

Revised: 09-28-2021

2N3202DD