

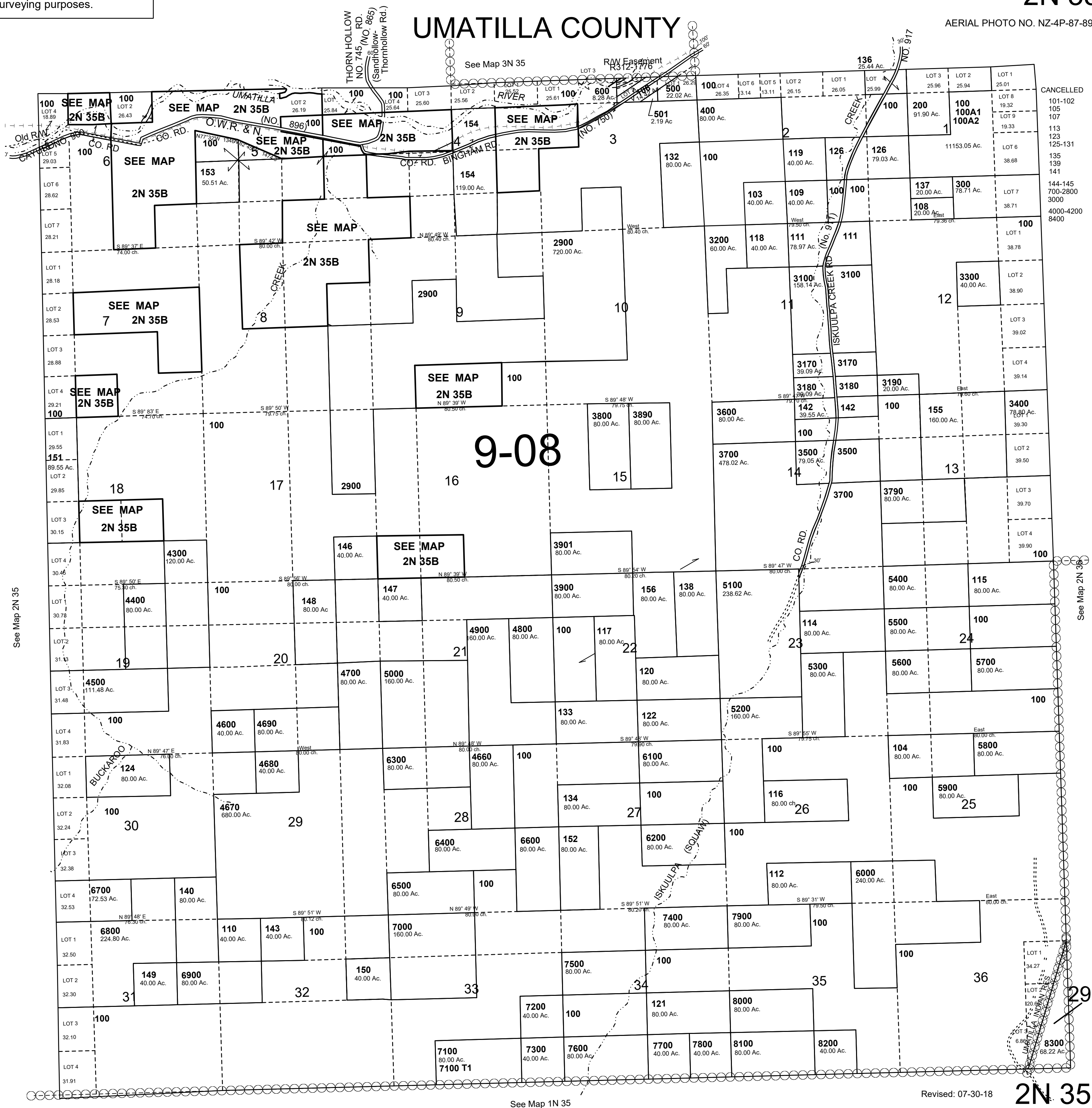
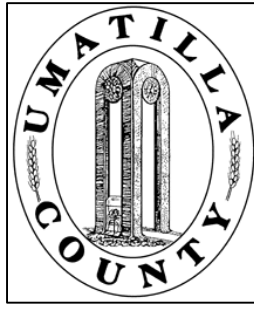
This map was prepared for Assessment & Taxation purposes only and was NOT prepared nor is it suitable for legal, engineering or surveying purposes.

SCALE: 1" = 2000'

T2N R35E WM UMATILLA COUNTY

2N 35

AERIAL PHOTO NO. NZ-4P-87-89



See Map 2N 35

See Map 2N 35

See Map 1N 35

Revised: 07-30-18

2N 35

29-3