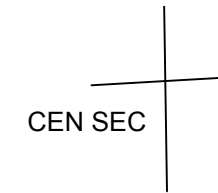
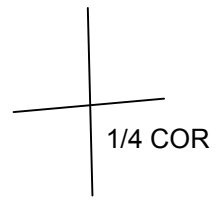


This map was prepared for Assessment & Taxation purposes only and was NOT prepared nor is it suitable for legal, engineering or surveying purposes.

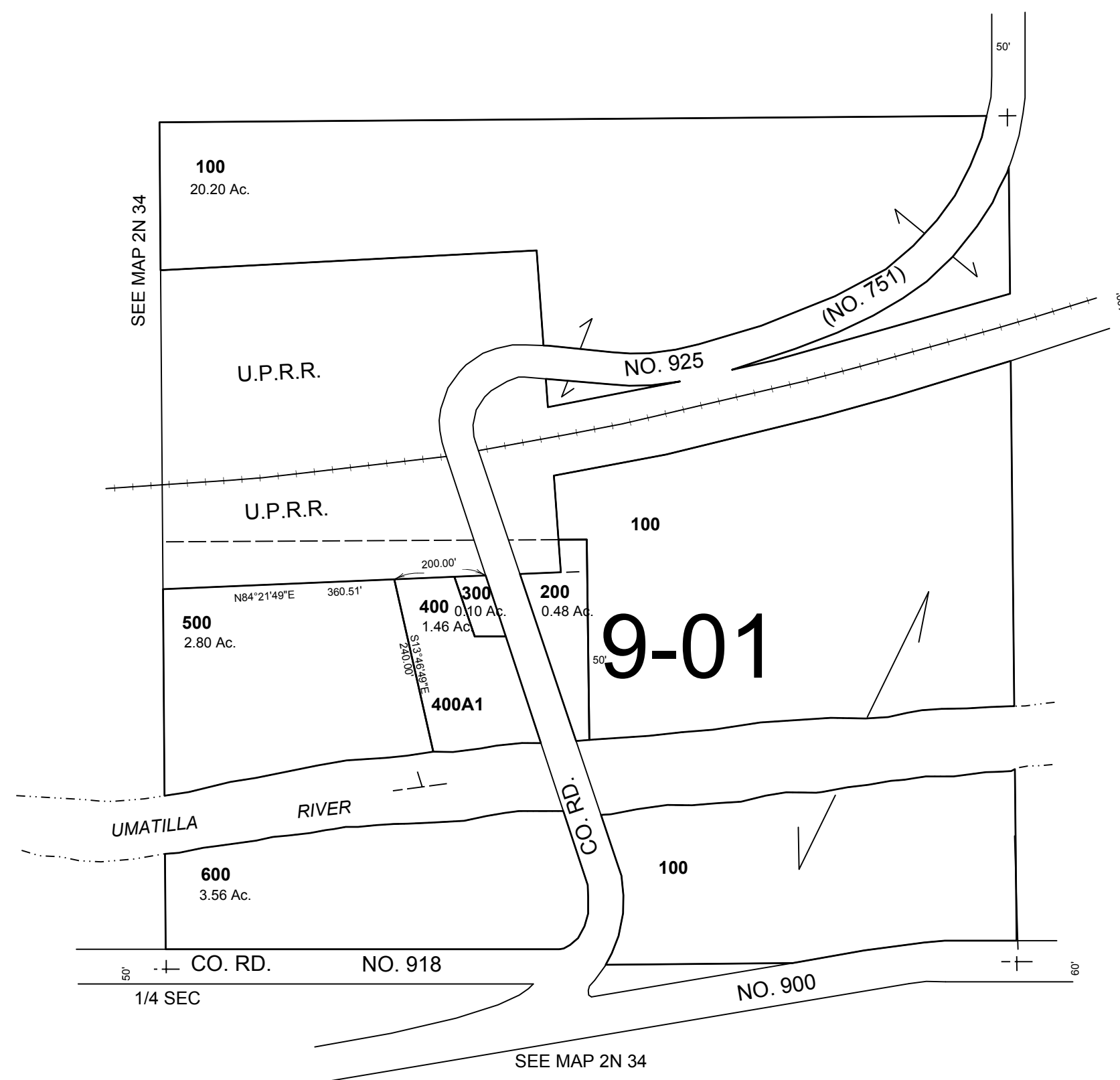
SW 1/4 SEC 3 T2N R34E WM  
UMATILLA COUNTY  
SCALE 1"=200'

2N 34 03C

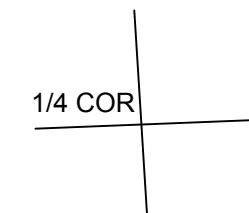
AERIAL PHOTO NO. 4P 39-41, 68-71 & 91-95



SEE MAP 2N 34



SEE MAP 2N 34



Revised: 05-03-18

2N 34 03C