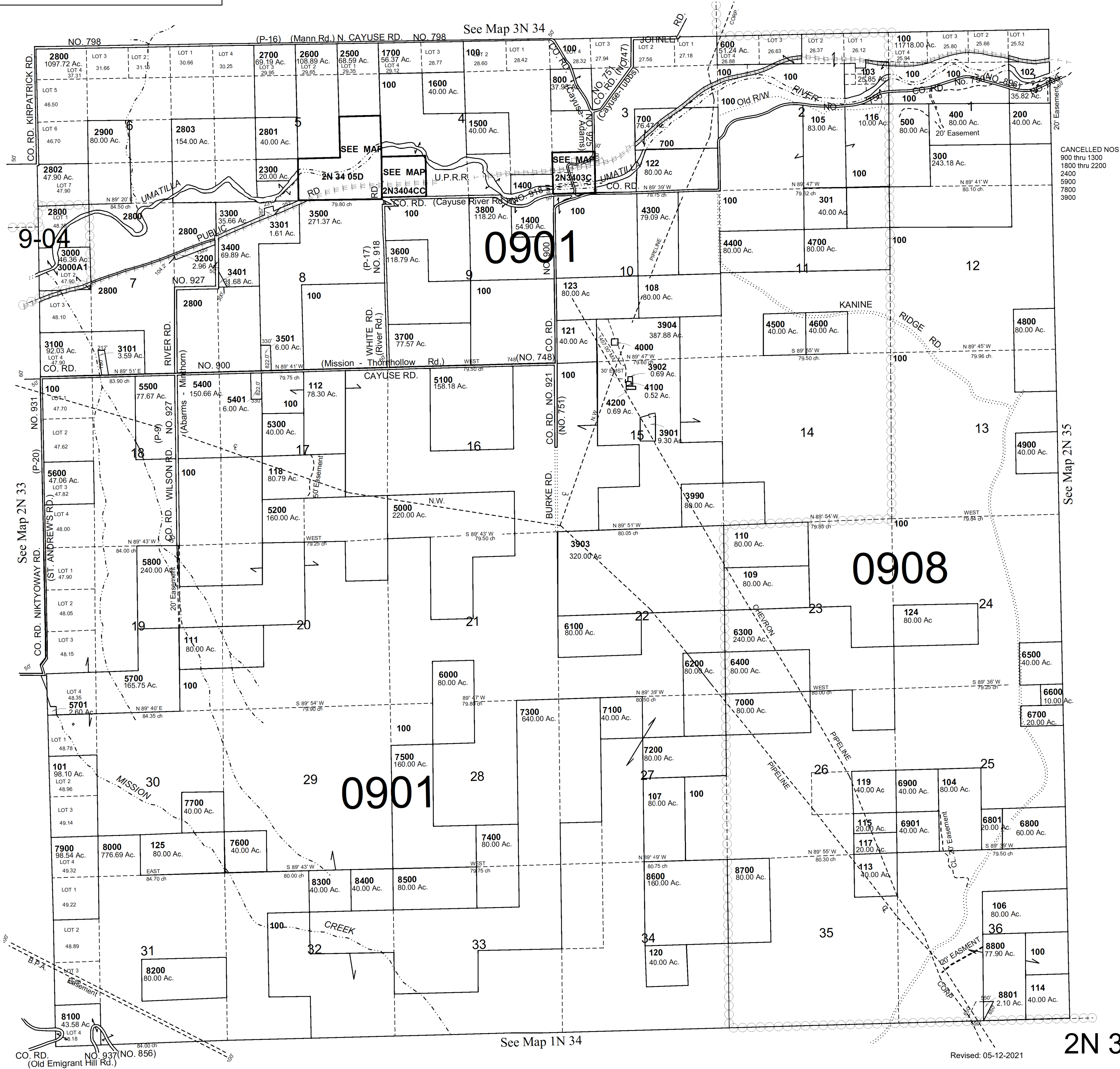


This map was prepared for Assessment & Taxation purposes only and was NOT prepared nor is it suitable for legal, engineering or surveying purposes.

T2N R34E WM UMATILLA COUNTY

2N 34

AERIAL PHOTO NO. NZ-4P 39-41,
68-71 & 91-95



2N 34

Revised: 05-12-2021