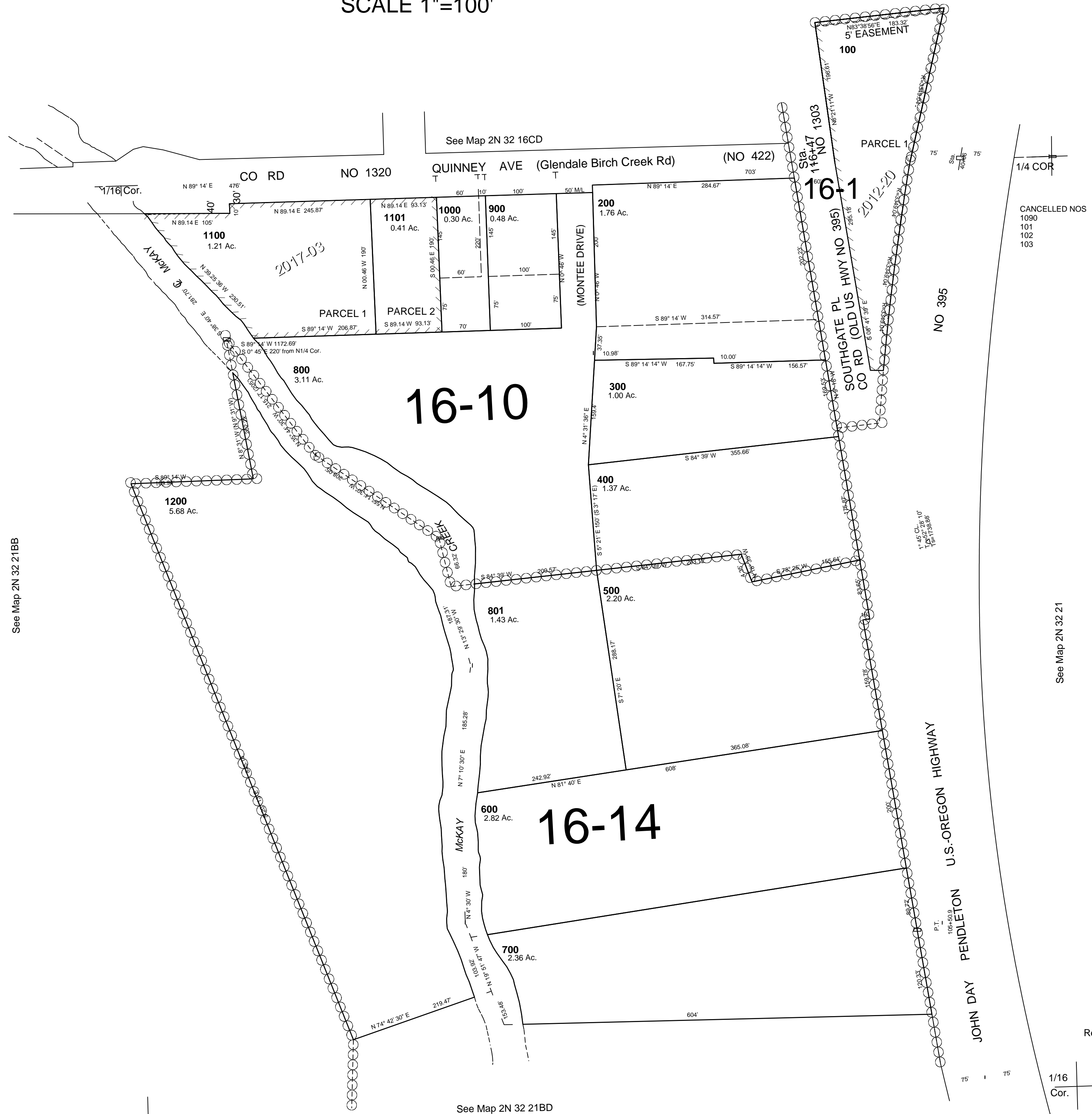


This map was prepared for Assessment & Taxation purposes only and was NOT prepared nor is it suitable for legal, engineering or surveying purposes.

NE1/4 NW1/4 SEC 21 T2N R32E WM UMATILLA COUNTY

SCALE 1"=100'

2N 32 21BA
AERIAL PHOTO NO. 4P-59



CANCELLED NOS
1090
101
102
103

Revised: 1/10/2016

1/16
Cor.

2N 32 21BA