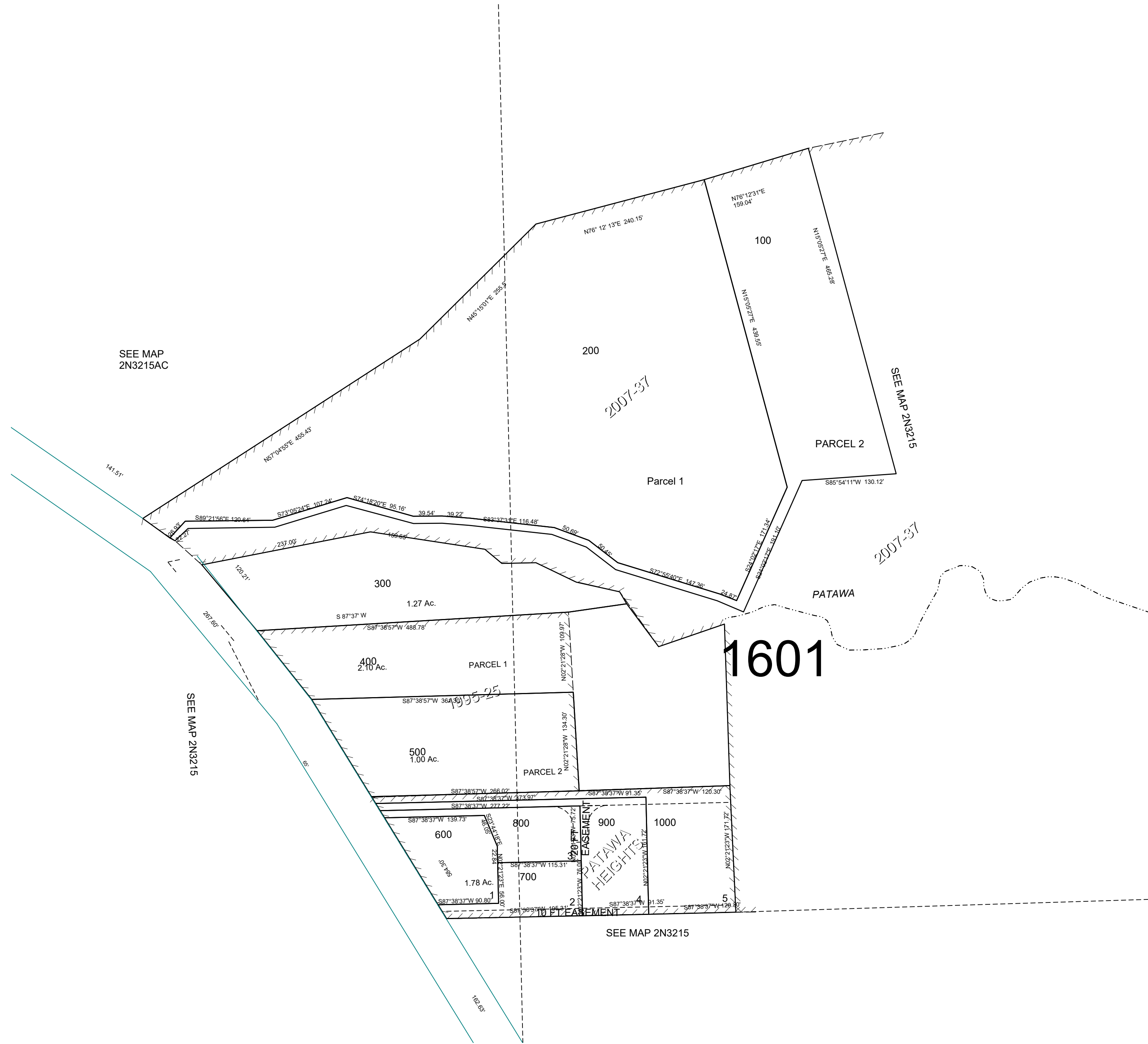


This map was prepared for Assessment & Taxation purposes only and was NOT prepared nor is it suitable for legal, engineering or surveying purposes.

SE1/4 NE1/4 SEC 15 T2N R32E WM UMATILLA COUNTY, OR

2N3215AD

SCALE: 1" = 100'



REVISED: 03-17-2021

2N3215AD