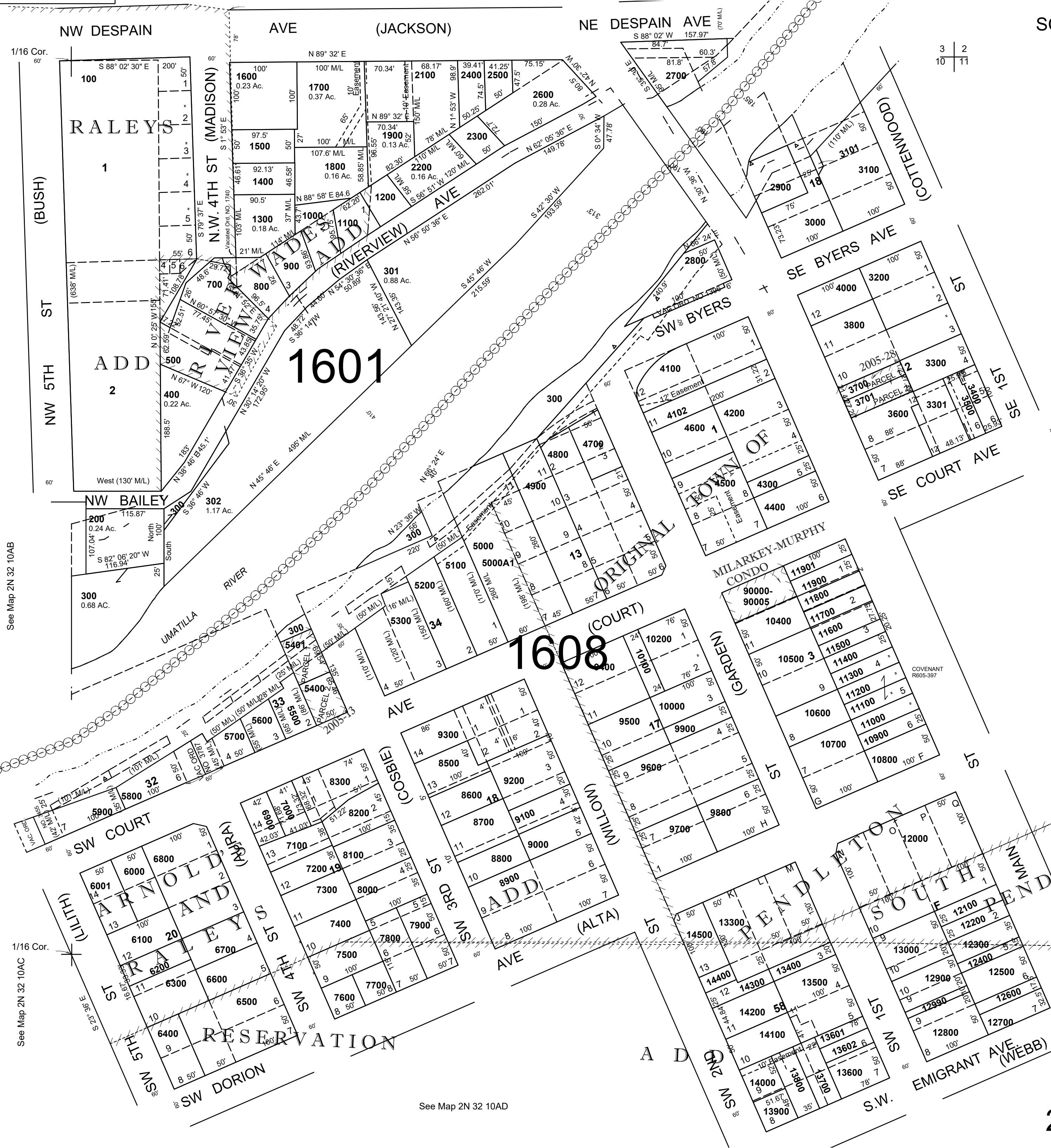
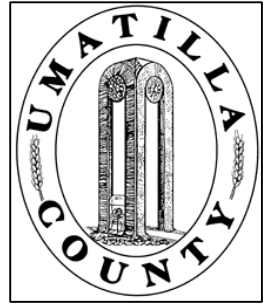


This map was prepared for Assessment & Taxation purposes only and was NOT prepared nor is it suitable for legal, engineering, or surveying purposes.

NE1/4 NE1/4 SEC 10 T2N R32E WM UMATILLA COUNTY

2N3210AA
AERIAL PHOTO NO NZ-4P-103

SCALE: 1" = 100'



- CANCELLED
- 7090
- 4101
- 600
- 4590
- 13100
- 13200
- 303
- 8400
- 3500 A1
- 2000

See Map 2N 32 10AB

See Map 2N 32 10AC

See Map 2N 32 10AD

See Map 2N 32 11BB

Revised: 09-28-2021

2N3210AA