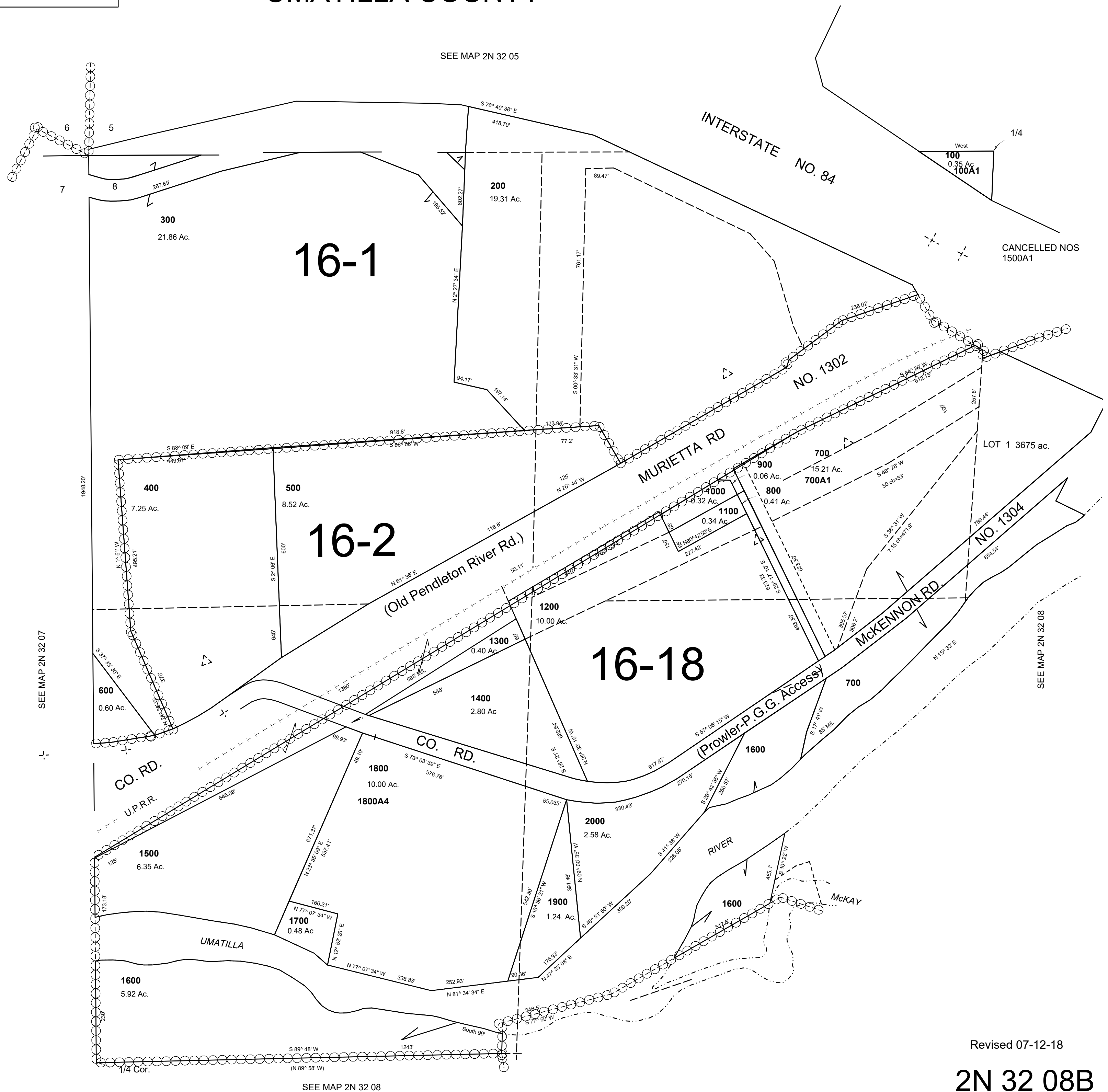
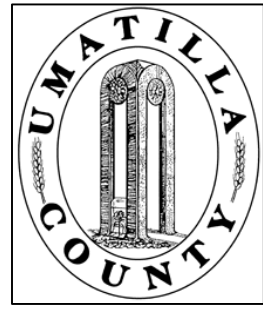


This map was prepared for Assessment & Taxation purposes only and was NOT prepared nor is it suitable for legal, engineering or surveying purposes.

# NW1/4 SEC 8 T2N R 32E WM UMATILLA COUNTY

SCALE: 1" = 200'

2N 32 08B  
AERIAL PHOTO NO. NZ-4P-105



Revised 07-12-18  
2N 32 08B