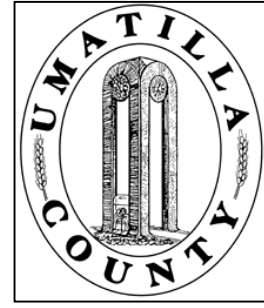


This map was prepared for Assessment & Taxation purposes only and was NOT prepared nor is it suitable for legal, engineering or surveying purposes.

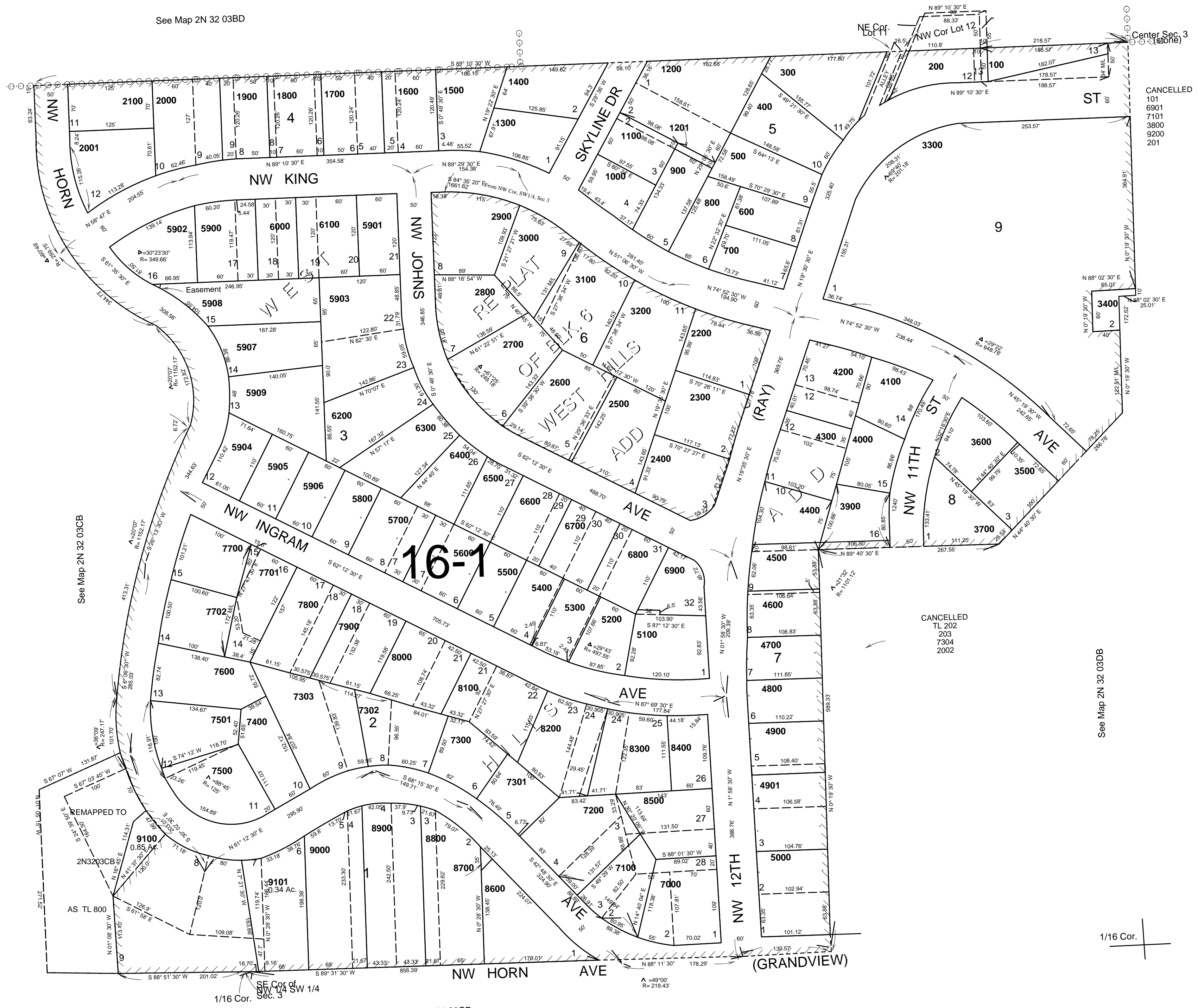


# NE1/4 SW1/4 SEC 03 T2N R32E WM UMATILLA COUNTY

## 2N3203CA

SCALE: 1" = 100'

See Map 2N 32 03BD



See Map 2N 32 03CB

See Map 2N 32 03CD

See Map 2N 32 03DB

1/16 Cor.

Revised: 12-07-11

## 2N3203CA