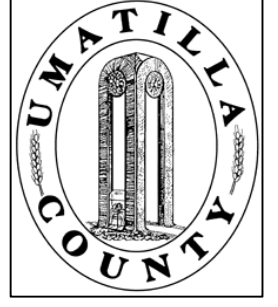


This map was prepared for Assessment & Taxation purposes only and was NOT prepared nor is it suitable for legal, engineering or surveying purposes.

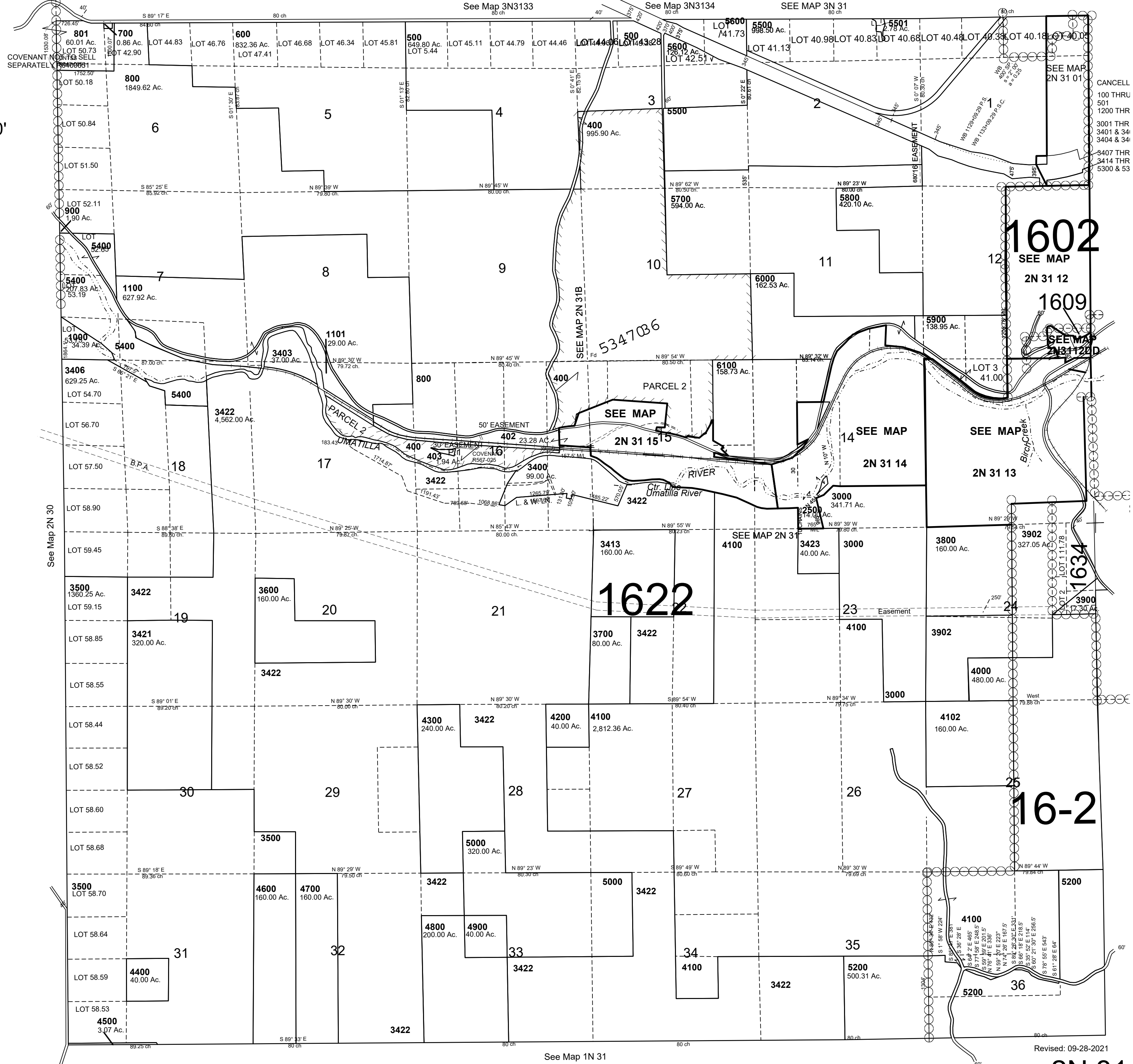
# T2N R31E WM UMATILLA COUNTY

## 2N 31

AERIAL PHOTO NO NZ-2P-185 & 190;  
3P 23, 28, 33 & 37



SCALE: 1" = 2000'



Revised: 09-28-2021

## 2N 31