

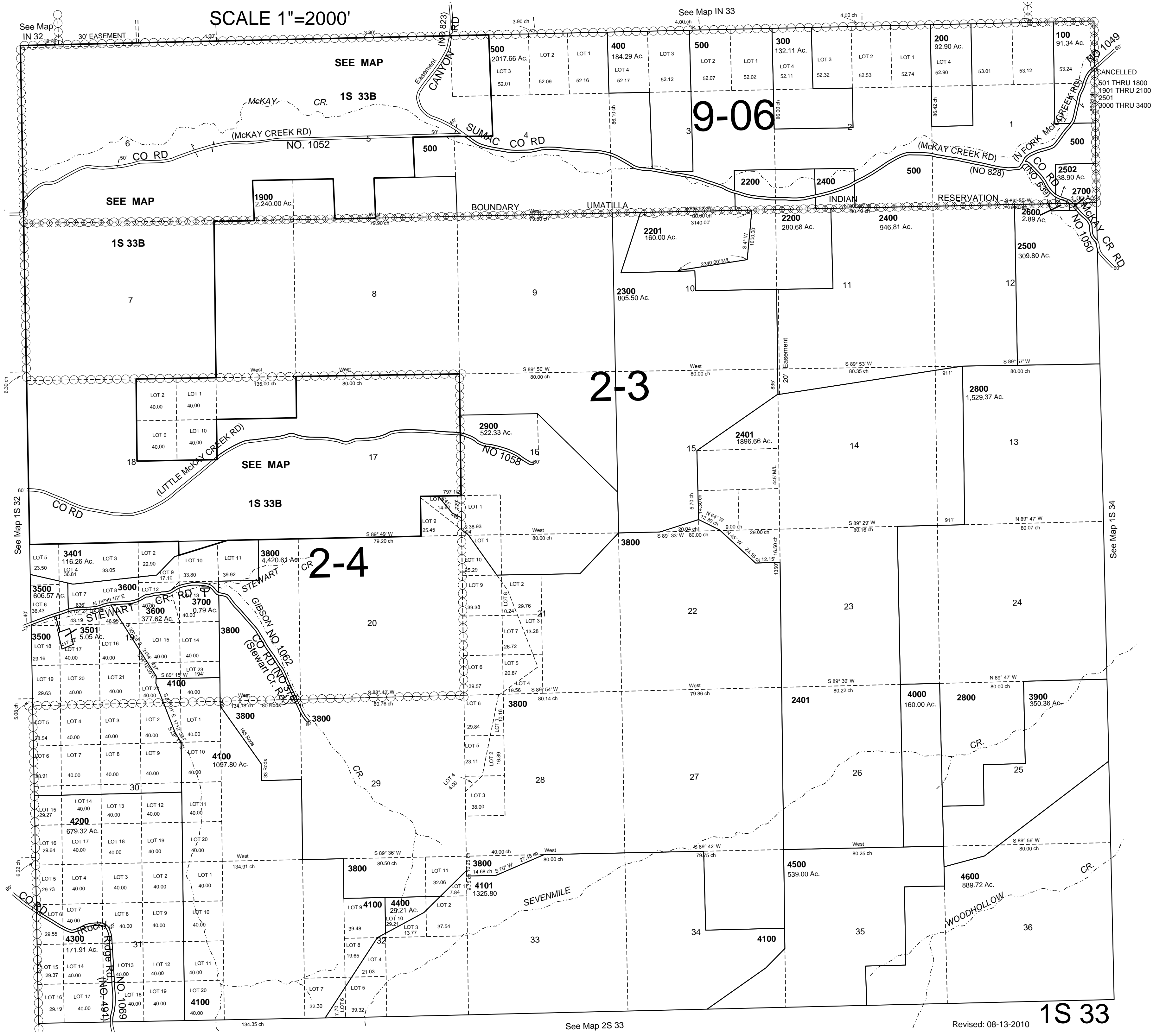
This map was prepared for Assessment & Taxation purposes only and was not prepared nor is it suitable for legal, engineering or surveying purposes.

T1S R33E WM UMATILLA COUNTY

1S 33

AERIAL PHOTO NO. 7P 17-23, 74-79 & 98-106

SCALE 1"=2000'



See Map IN 32

See Map IN 33

See Map 1S 32

See Map 1S 34

See Map 2S 33

Revised: 08-13-2010

1S 33