

This map was prepared for Assessment & Taxation purposes only and was NOT prepared nor is it suitable for legal, engineering or surveying purposes.

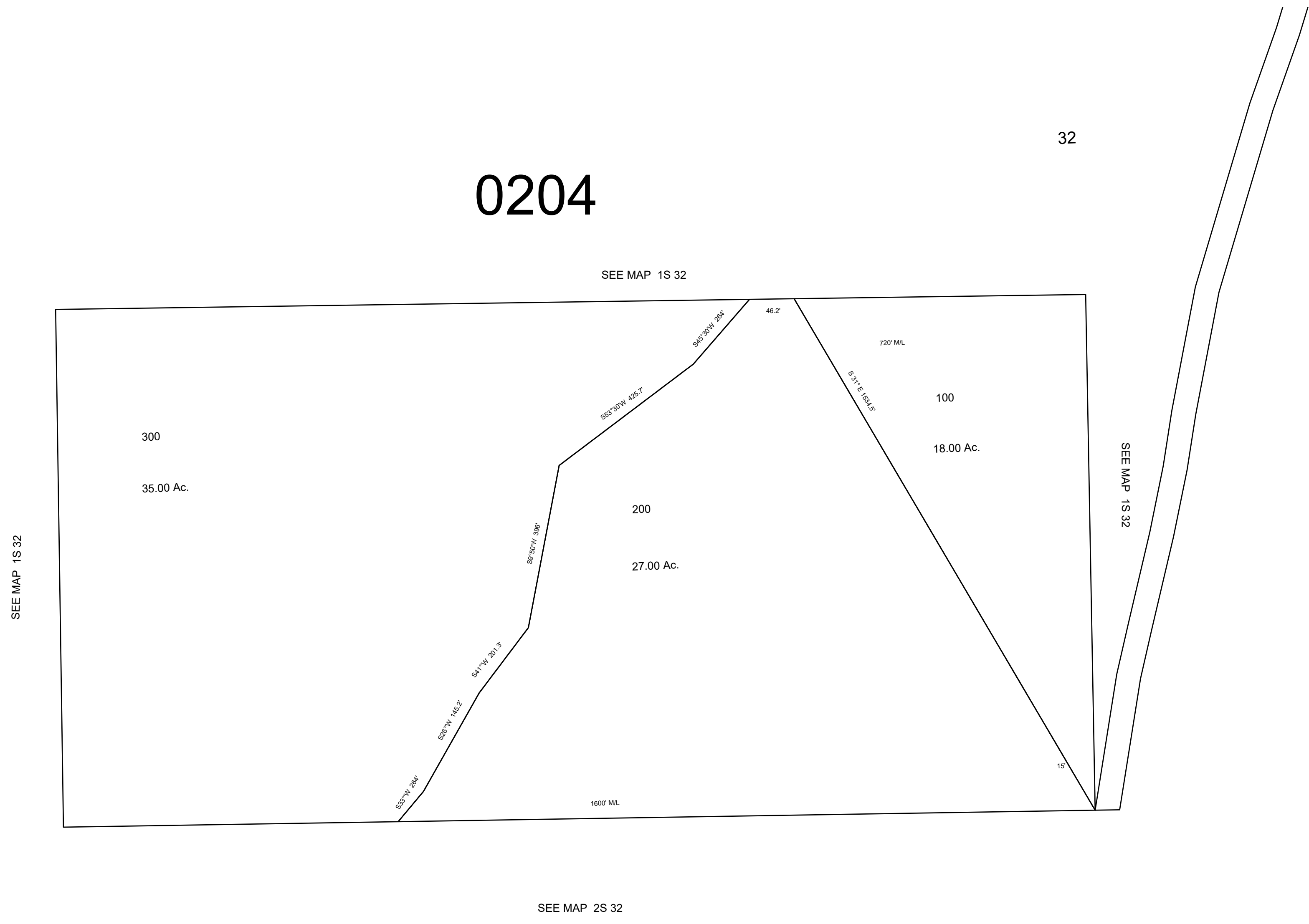
SW1/4 SEC 32 T1S R32E WM UMATILLA COUNTY, OR

1S3232C

SCALE: 1" = 200'

0204

32



REVISED: 1-28-21

1S3232C