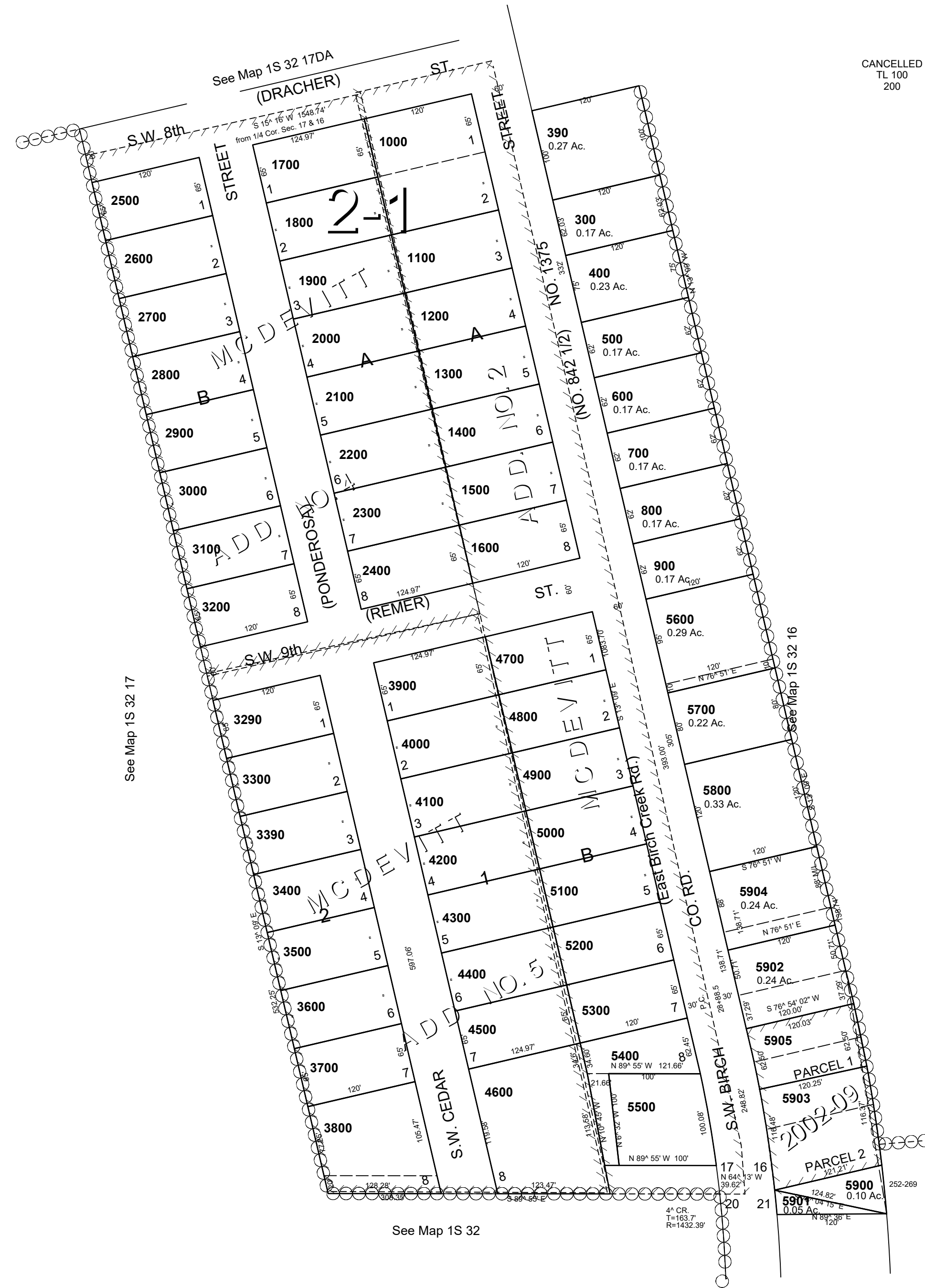


This map was prepared
for assessment purposes

SE1/4 SE1/4 SEC 17 T1S R32E WM
UMATILLA COUNTY
SCALE 1"=100'

1S 32 17DD

AERIAL PHOTO NO. NZ-7P-69



CANCELLED
TL 100
200

Revised: 10-24-18

1S 32 17DD