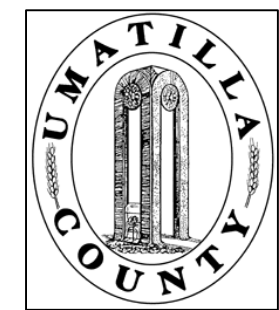


This map was prepared for Assessment & Taxation purposes only and was NOT prepared nor is it suitable for legal, engineering or surveying purposes.



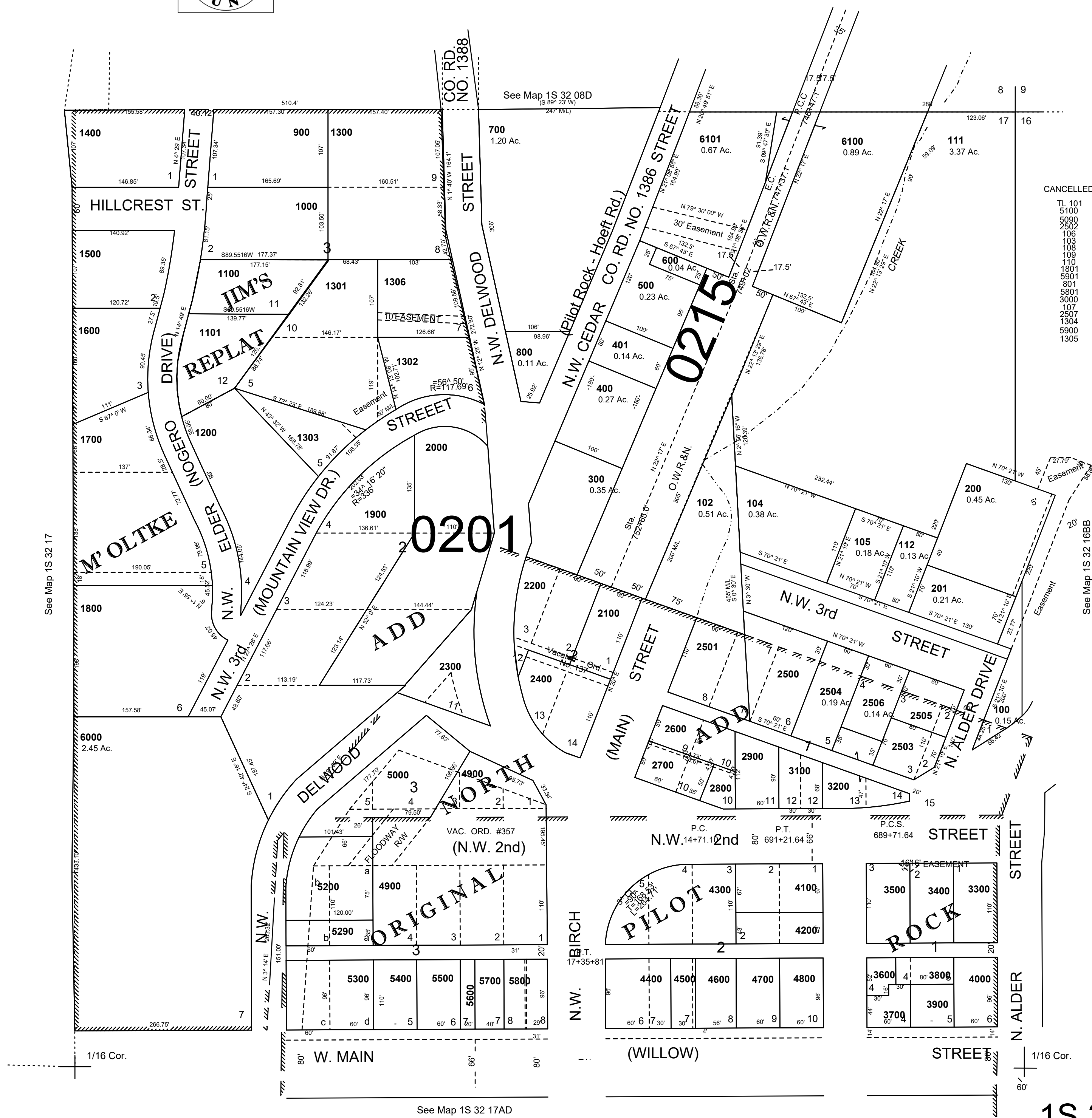
NE1/4 NE1/4 SEC 17 T1S R32E WM

UMATILLA COUNTY, OR

SCALE: 1" = 100'

1S 32 17AA

AERIAL PHOTO NO NZ-7P-69



CANCELLED
 TL 101
 5100
 5090
 2502
 106
 103
 108
 109
 110
 1801
 5801
 801
 5801
 3000
 107
 2507
 1304
 5900
 1305

See Map 1S 32 17

See Map 1S 32 16BB

Revised: 06-24-2021

1S 32 17AA