

This map was prepared for Assessment purposes only and was not prepared nor is it suitable for legal, engineering or surveying purposes.

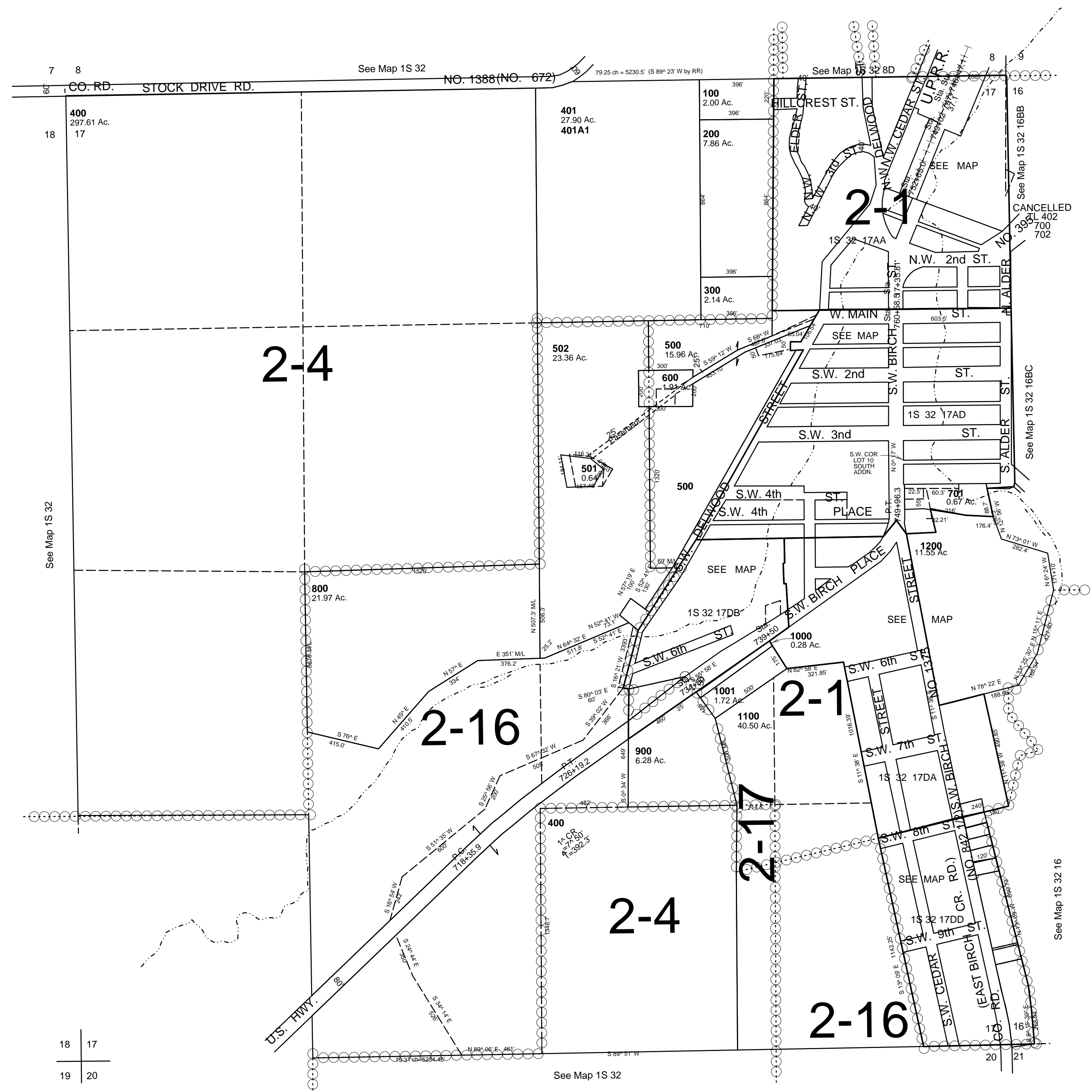
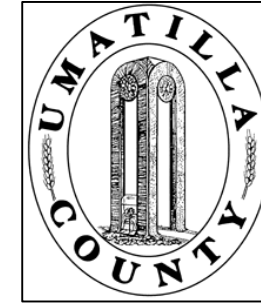
SEC 17 T 1S R 32E WM UMATILLA COUNTY, OR

SCALE: 1" = 400'

Revised: 2/02/09

1S 32 17

AERIAL PHOTO NO. 7P-69



1S3217