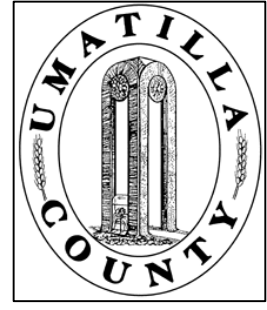


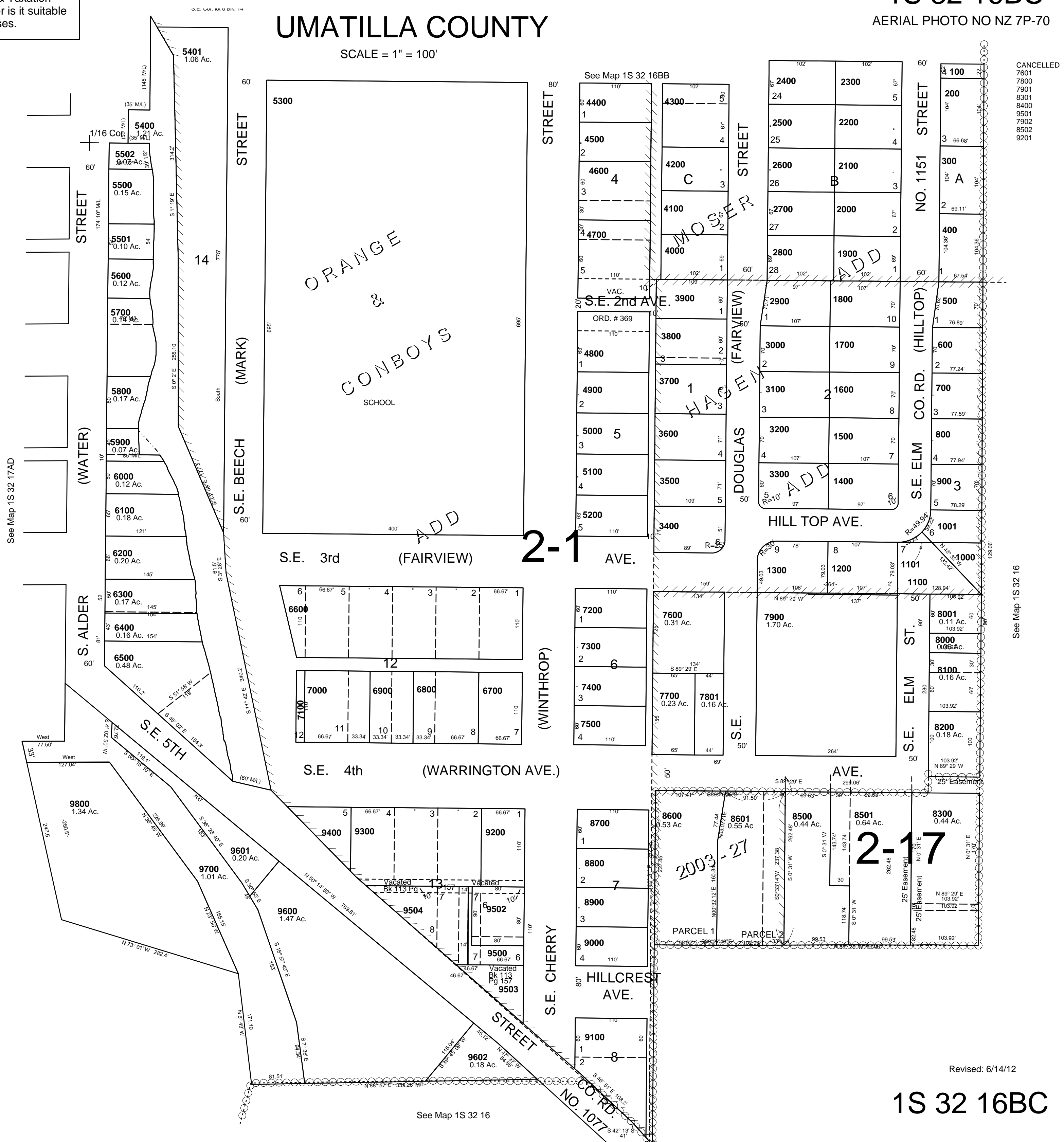
This map was prepared for Assessment & Taxation purposes only and was NOT prepared nor is it suitable for legal, engineering or surveying purposes.



SW1/4 NW1/4 SEC16 T1S R 32EWM UMATILLA COUNTY

1S 32 16BC
AERIAL PHOTO NO NZ 7P-70

SCALE = 1" = 100'



CANCELLED
7601
7800
7901
8400
9501
7902
8502
9201

See Map 1S 32 17AD

See Map 1S 32 16

See Map 1S 32 16

Revised: 6/14/12

1S 32 16BC