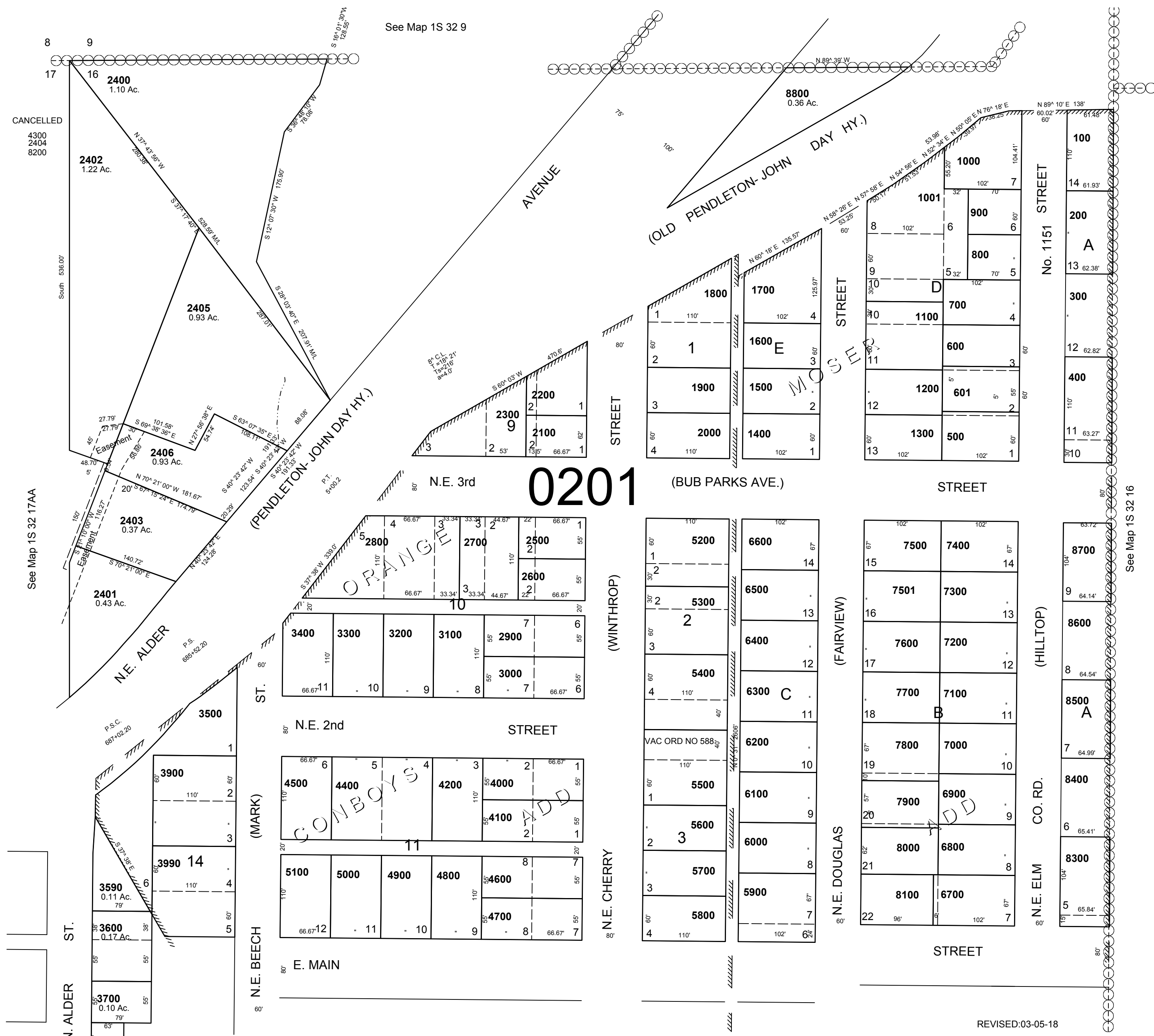


This map was prepared for Assessment & Taxation purposes only and was NOT prepared nor is it suitable for legal, engineering or surveying purposes.

NW 1/4 NW 1/4 SEC 16 T1S R32E WM UMATILLA COUNTY

SCALE 1"=100'

1S 32 16BB
AERIAL PHOTO NO. NZ-7P-70



1S 32 16BB
REVISED:03-05-18