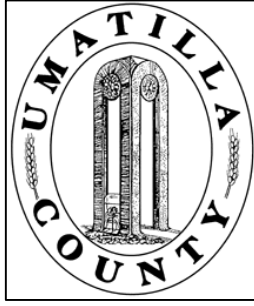


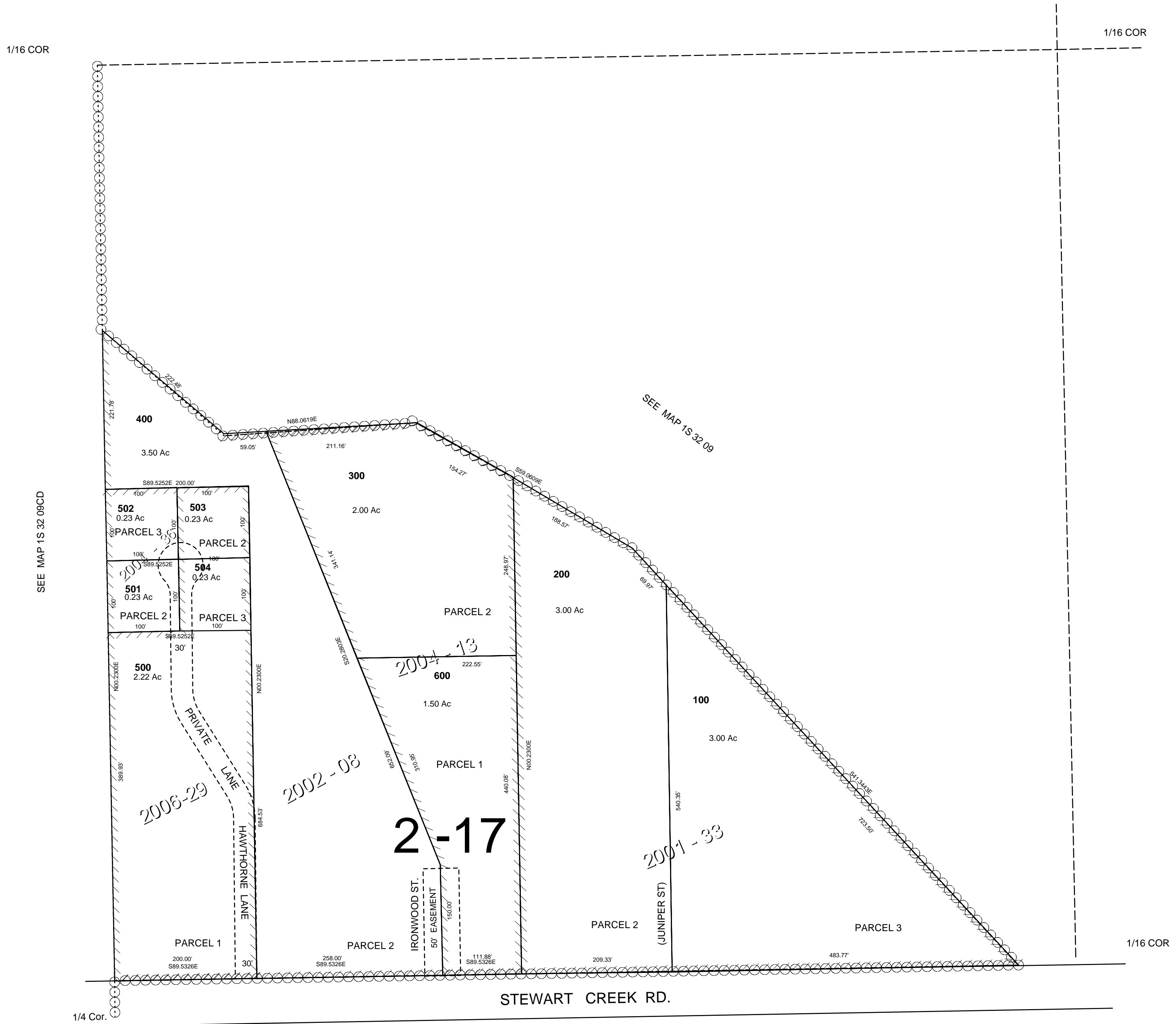
This map was prepared for Assessment purposes only.



SW1/4 SE1/4 SEC 9 T1S R 32E WM
UMATILLA COUNTY, OR
SCALE: 1" =100'

11/17/06

1S 32 09DC
AERIAL PHOTO NO. NZ-7P-27



SEE MAP 1S 32 16

1S 32 09DC