

This map was prepared for Assessment & Taxation purposes only and was NOT prepared nor is it suitable for legal, engineering or surveying purposes.

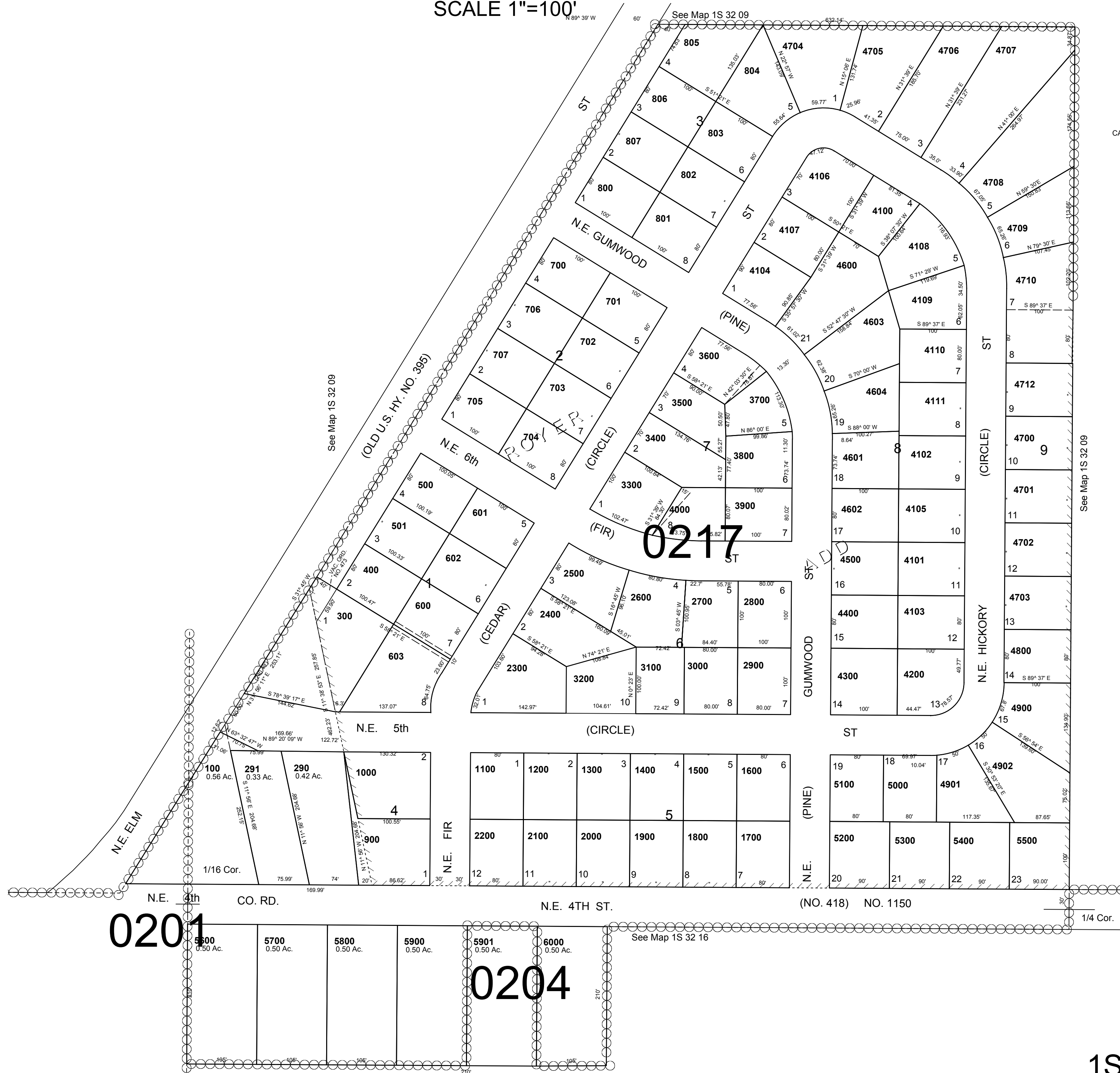
SE1/4 SW1/4 SEC 9 T1S R32E WM UMATILLA COUNTY

1S 32 09CD

AERIAL PHOTO NO. NZ-7P-27

SCALE 1"=100'

CANCELLED
TL 292
200
4711



See Map 1S 32 09

0217

0201

0204

1/4 Cor.

Revised: 09-26-17

1S 32 09CD