

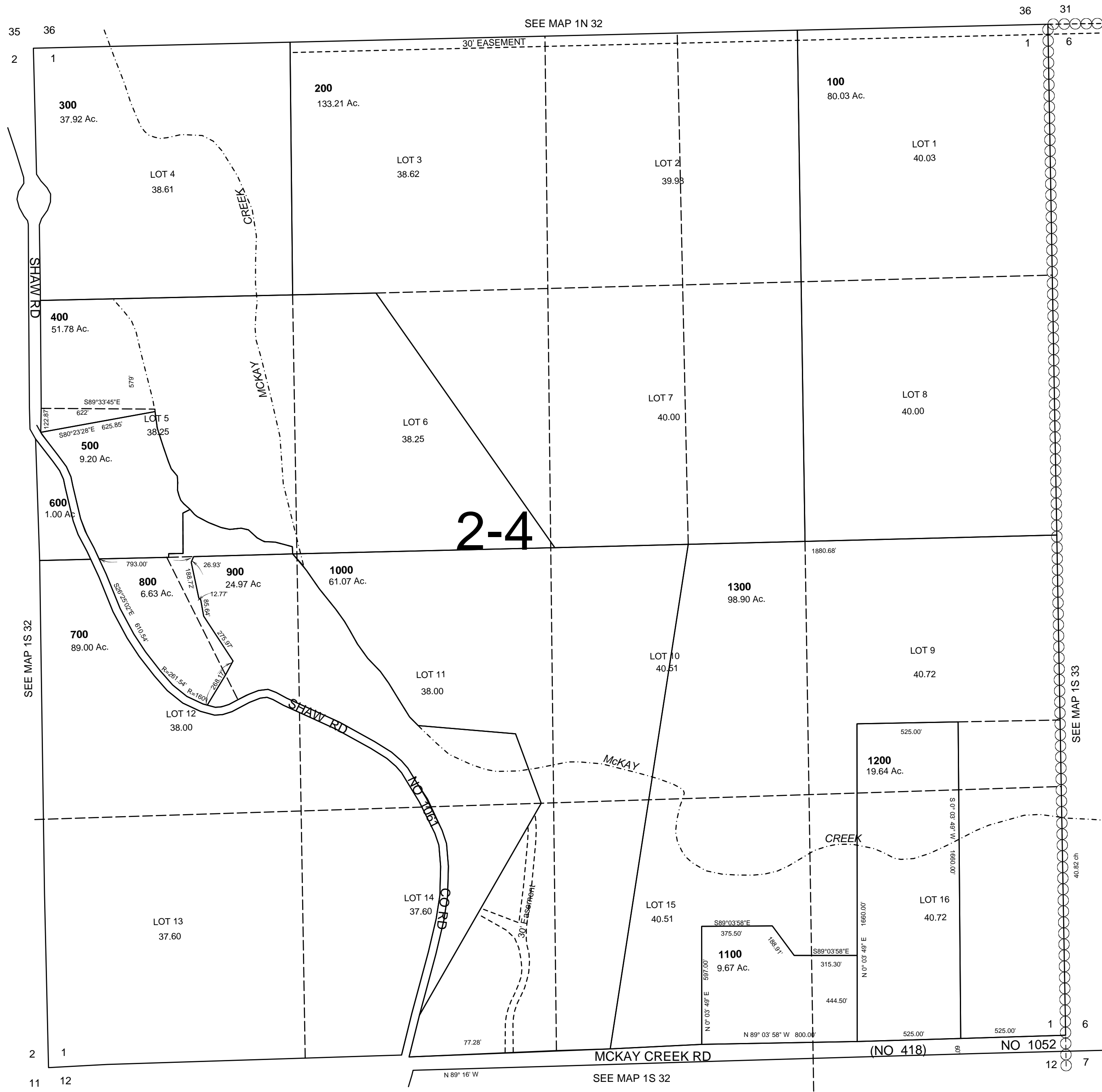
This map was prepared for Assessment & Taxation purposes only and was NOT prepared nor is it suitable for legal, engineering or surveying purposes.

SEC 1 T2S R32E WM UMATILLA COUNTY

1"=400'

1S 32 01

AERIAL PHOTO NO. 7P 23-29, 68-74, 106-112



Revised: 1/14/15
1S 32 01