

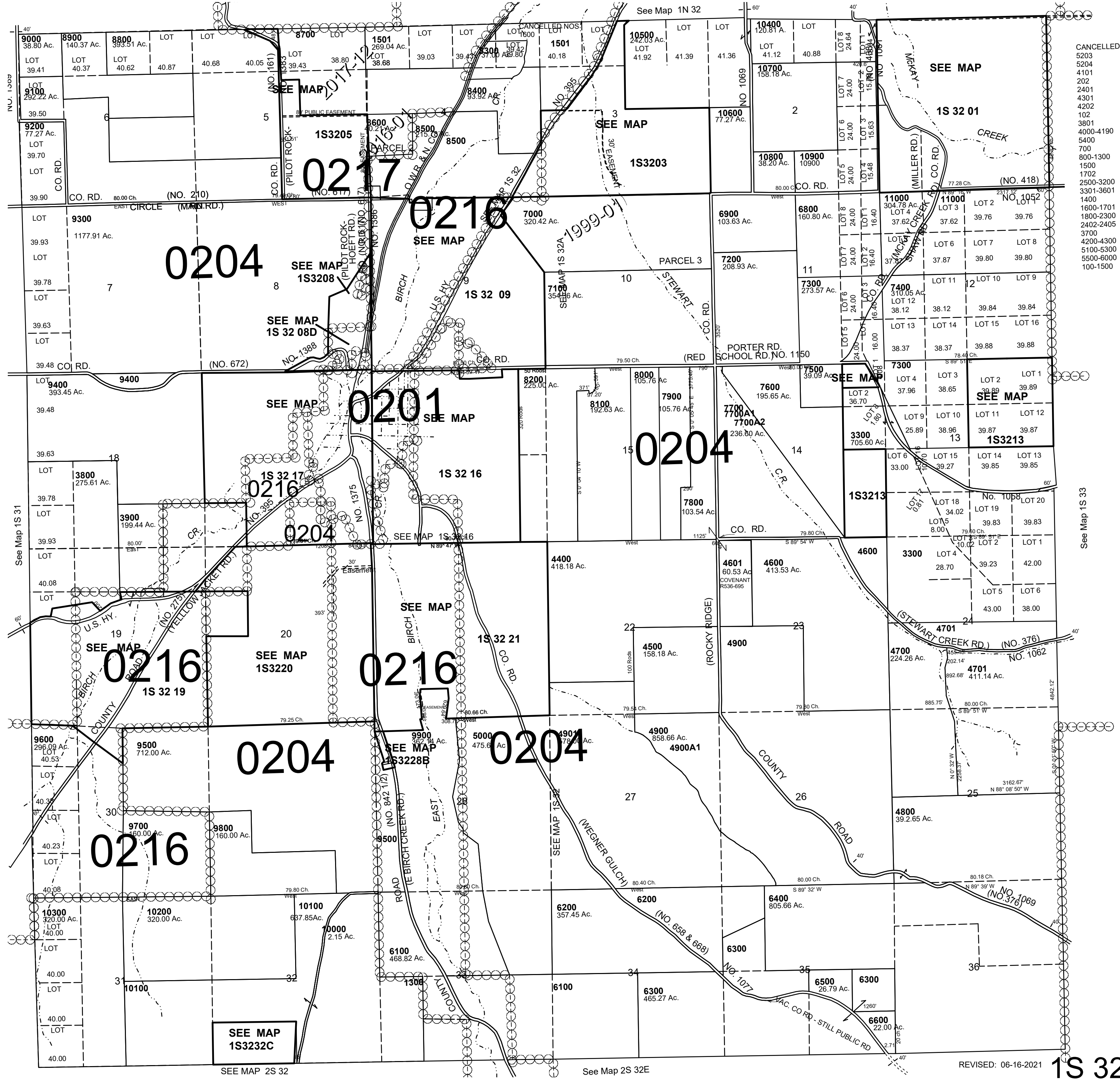
This map was prepared for Assessment & Taxation purposes only and was NOT prepared nor is it suitable for legal, engineering or surveying purposes.

SCALE: 1" = 2000'

T1S R32E WM
UMATILLA COUNTY, OR

1S 32

AERIAL PHOTO NO. NZ-7P 23-29, 68-74 & 106-112



- CANCELLED
- 5203
- 5204
- 4101
- 202
- 2401
- 4301
- 4202
- 102
- 3801
- 4000-4190
- 5400
- 700
- 800-1300
- 1500
- 1702
- 2500-3200
- 3301-3601
- 1400
- 1600-1701
- 1800-2300
- 2402-2405
- 3700
- 4200-4300
- 5100-5300
- 5500-6000
- 100-1500

See Map 1S 33

REVISED: 06-16-2021

1S 32