

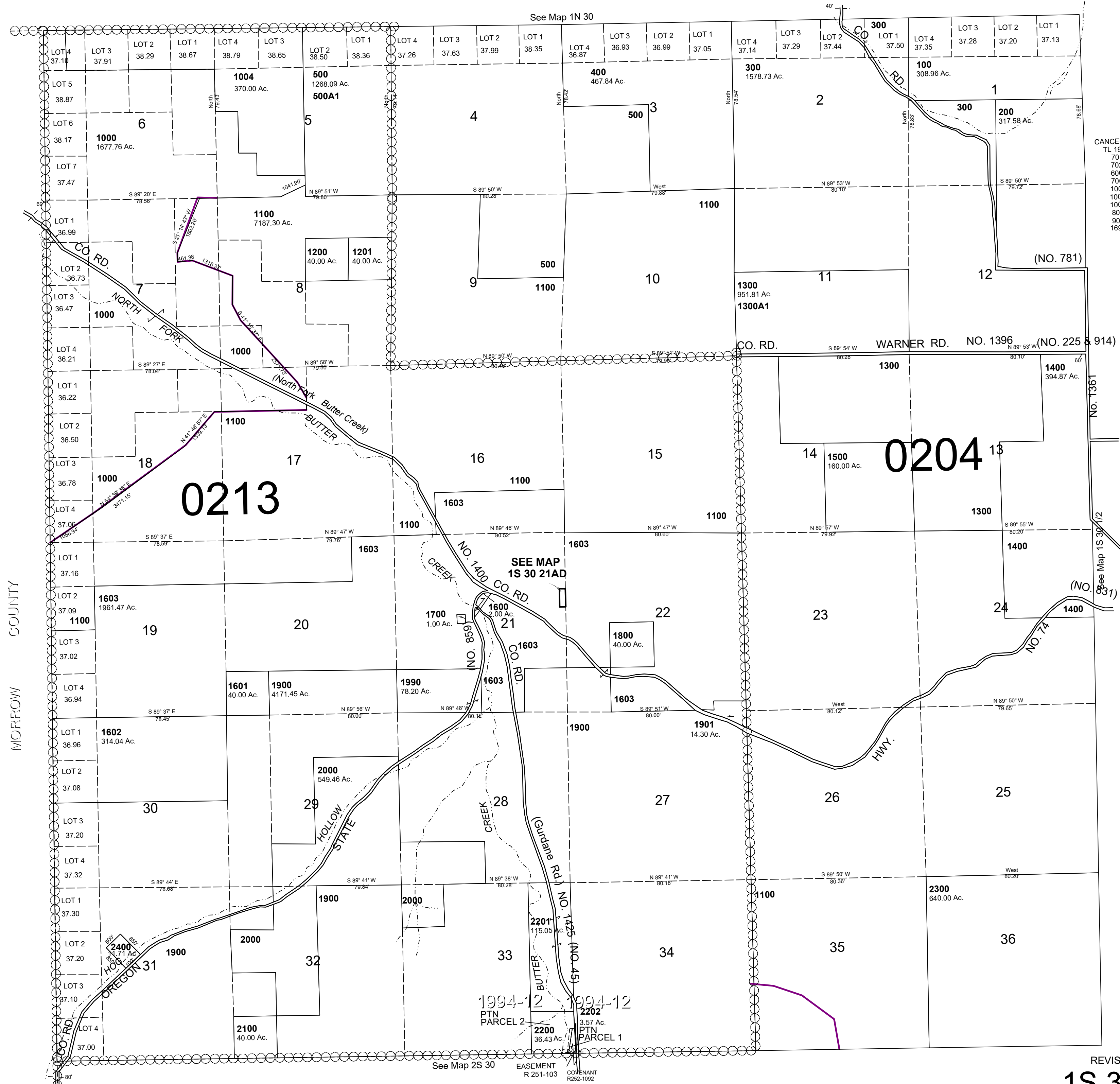
This map was prepared for Assessment & Taxation purposes only and was NOT prepared nor is it suitable for legal, engineering or surveying purposes.

T1S R30E WM UMATILLA COUNTY

1S 30

SCALE 1"=2000'

AERIAL PHOTO NO NZ-7P 53-60 & 120-127



MORROW COUNTY

CANCELLED
TL 1980
701
702
700
1001
1002
1003
800
900
1690

REVISED: 06-16-2021

1S 30