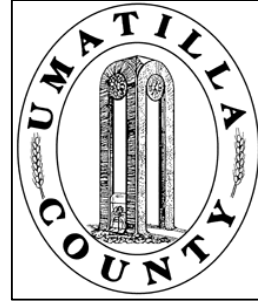


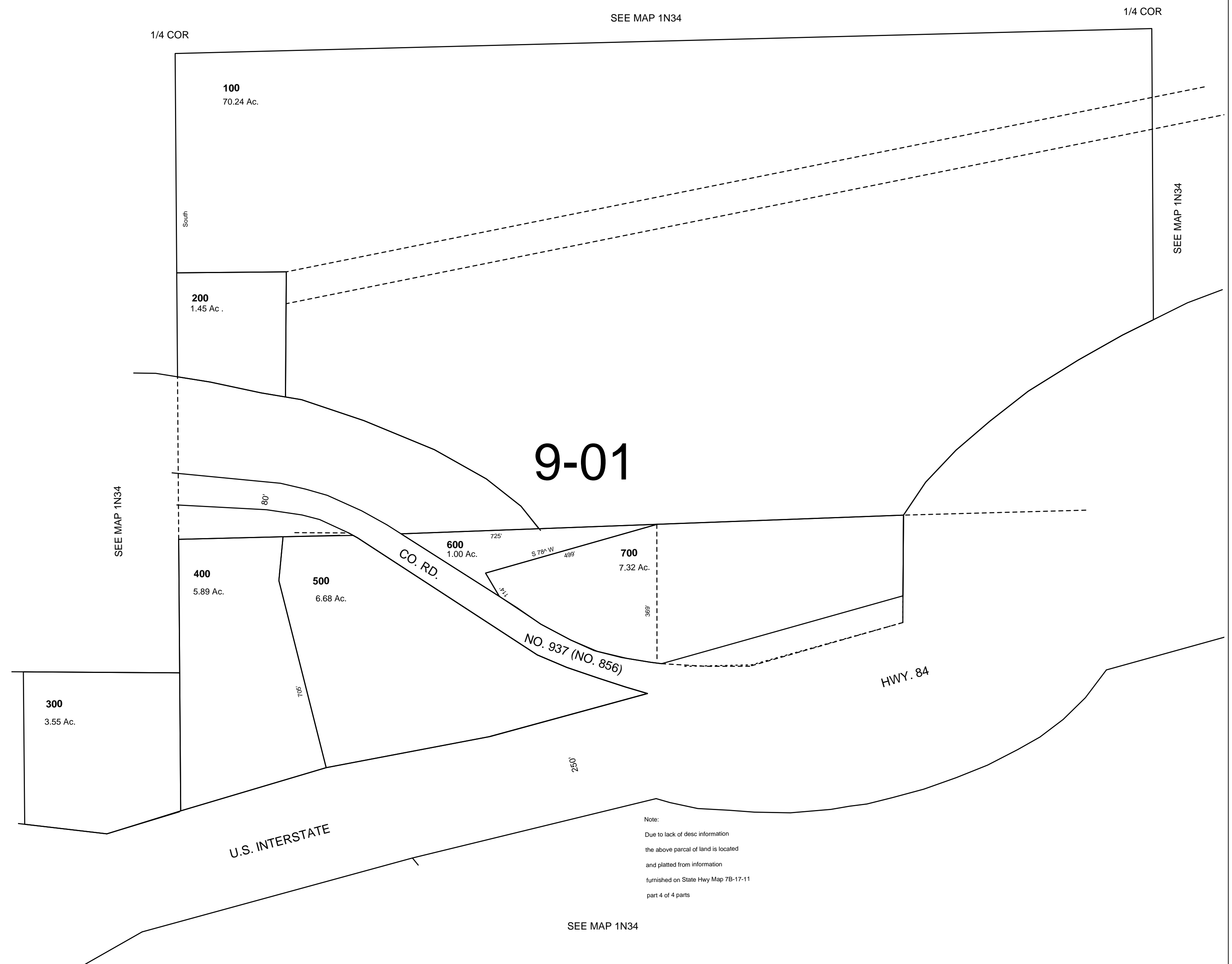
This map was prepared for Assessment & Taxation purposes only and was NOT prepared nor is it suitable for legal, engineering or surveying purposes.



SW1/4 SEC 3 T1N R34E WM UMATILLA COUNTY, OR

SCALE: 1" = 200

1N 34 03C
AERIAL PHOTO NO NZ 4P 14-19



Revised: 10-21-09

1N 34 03C