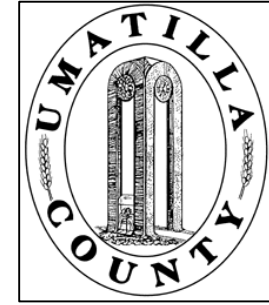


This map was prepared for Assessment & Taxation purposes only and was NOT prepared nor is it suitable for legal, engineering or surveying purposes.

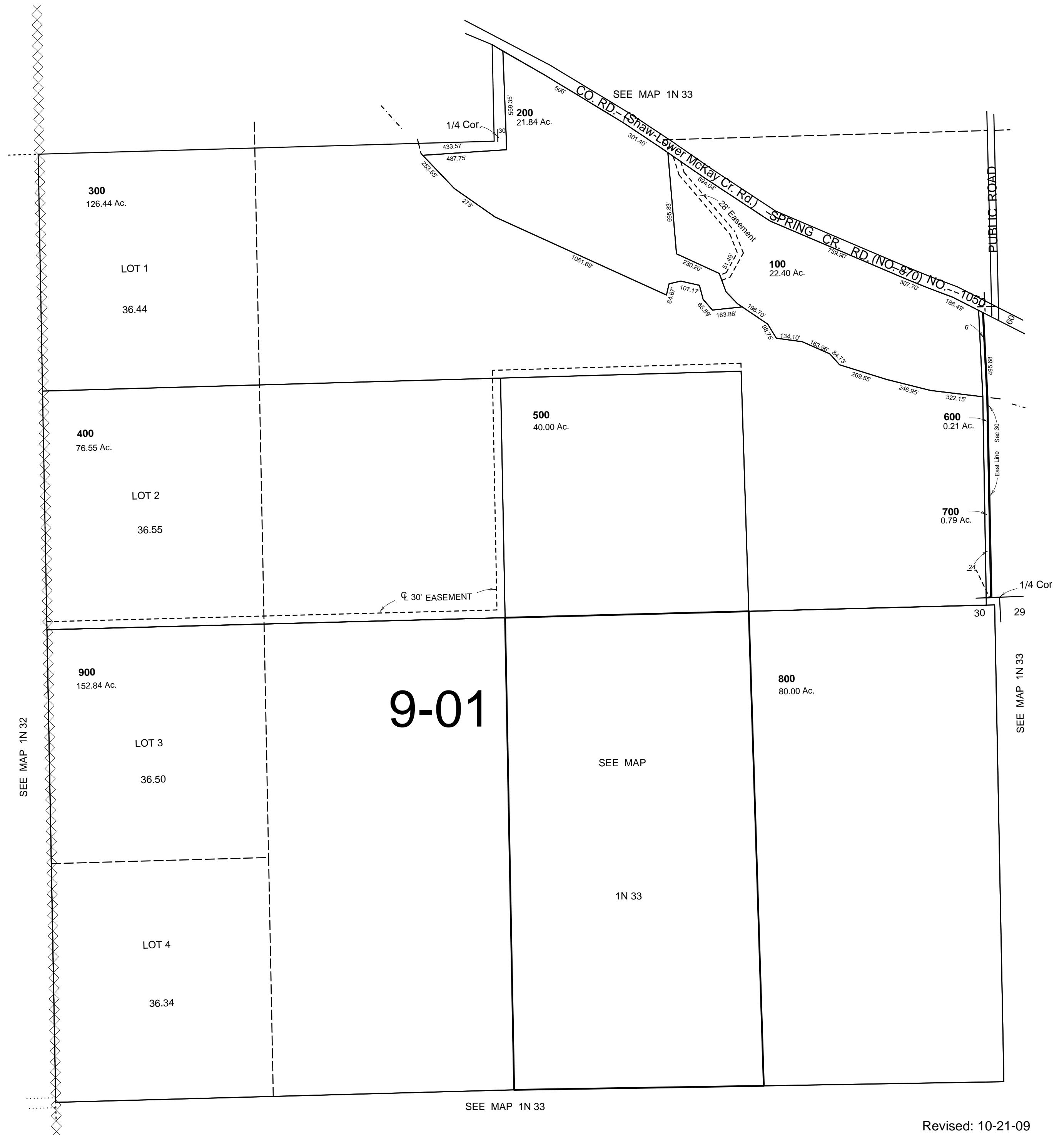


SEC 30 T1N R33E WM UMATILLA COUNTY, OR

SCALE: 1" = 400'

1N 33 30

AERIAL PHOTO NO. NZ-4P 8-12
3P 175-180 & 139-134



Revised: 10-21-09

1N 33 30