

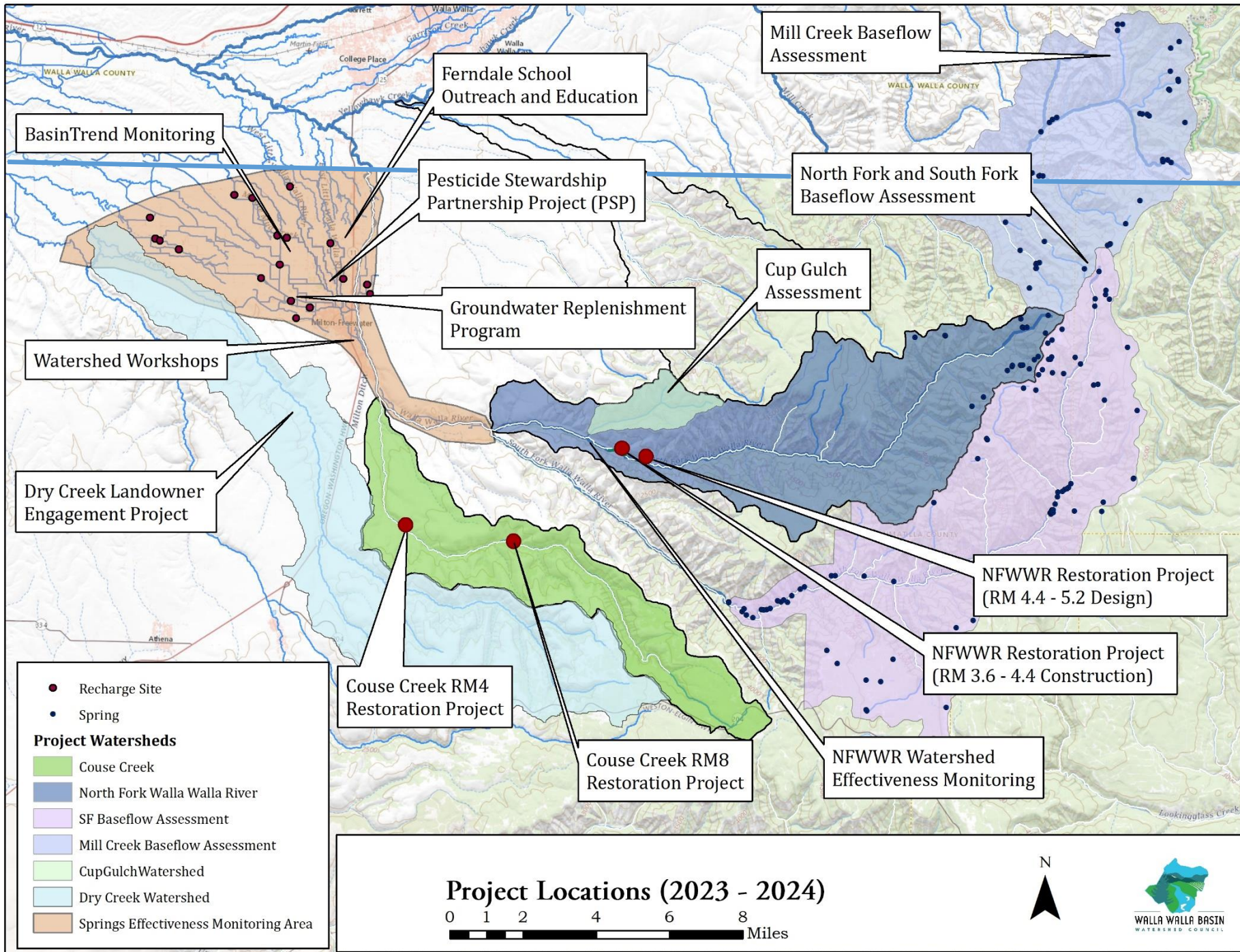
Umatilla County Commissioners Update

April 24, 2024



WALLA WALLA BASIN
W A T E R S H E D C O U N C I L



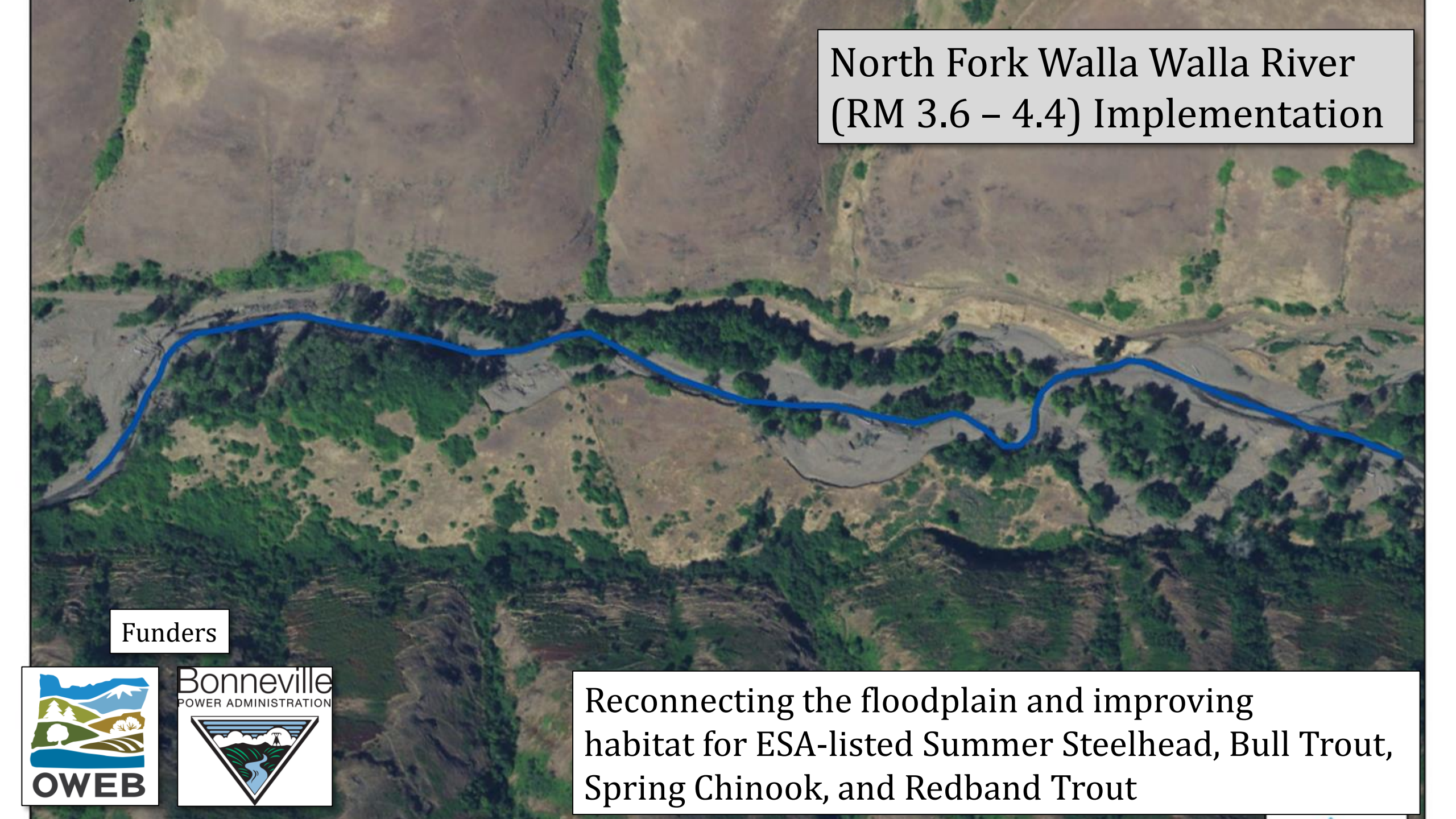


Couse Creek RM 4 Project

Reconnecting the floodplain and improving habitat for ESA-listed Summer Steelhead

Funders





North Fork Walla Walla River
(RM 3.6 – 4.4) Implementation

Funders



Reconnecting the floodplain and improving habitat for ESA-listed Summer Steelhead, Bull Trout, Spring Chinook, and Redband Trout

North Fork Walla Walla River (RM 3.6 – 4.4) Implementation

Doubled the amount of available fish habitat by creating multiple side-channels and increasing instream complexity

Funders



Walla Walla Basin Pesticide Stewardship Partnership Project 2005 - Present

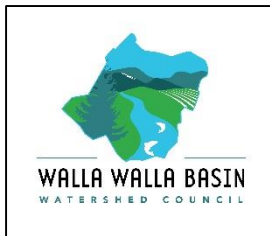


We collected grab-samples at five locations in the valley from late March to mid-October of this year

2024 results will be shared in the first quarter of 2025



Project Partners



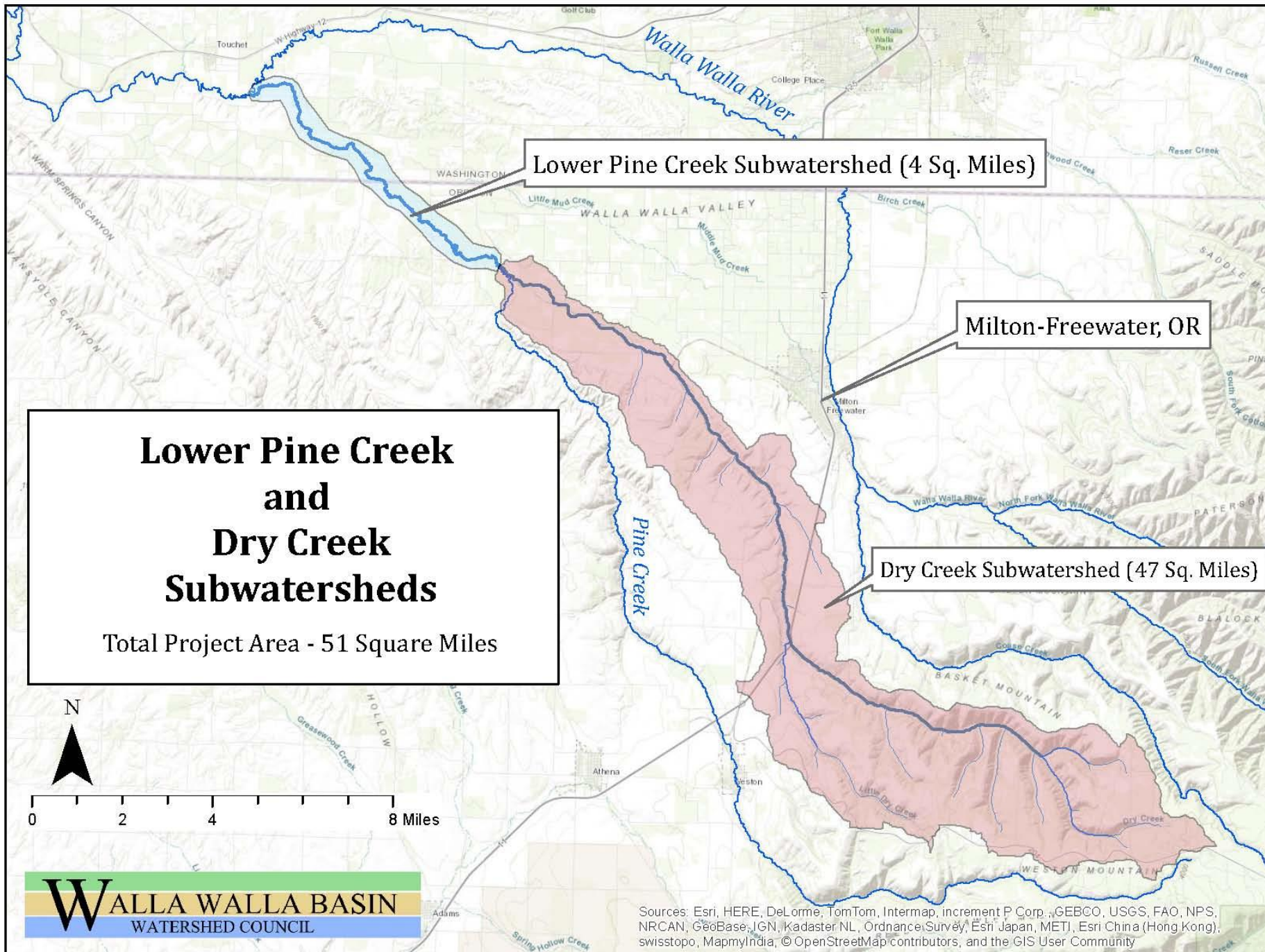
Blue Mountain
Horticultural
Society

Dry Creek and Lower Pine Creek Engagement Project



Funders







Hydrological Trend Monitoring

Funders



Data collection, analysis, and reporting.

Surface water flows (23 sites) and water temperature (20+ sites)

Groundwater elevation (64 sites)



Community Workshops, Outreach, and Education

Funders:





Earth Day Oregon



Volunteer LTPBR Event



CTUIR Hatchery Tour



M-F Trick or Treat Event



Outdoor Education at Harris Park



Walla Walla Water 2050 Community Event



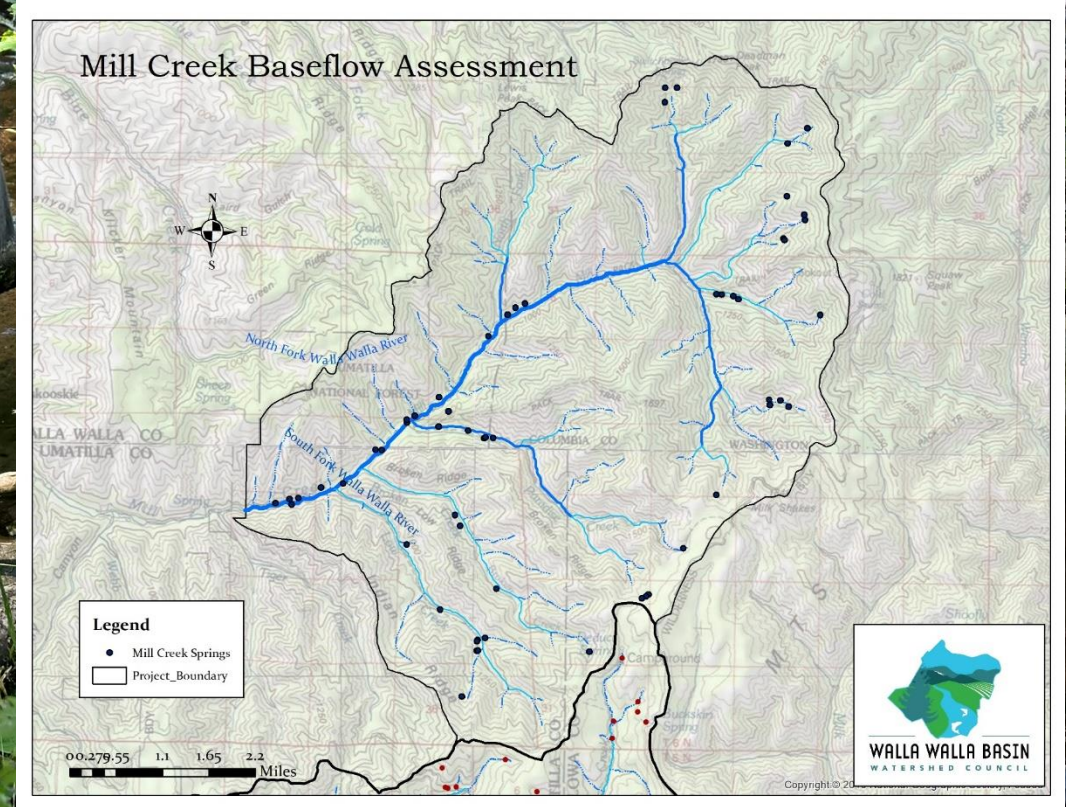
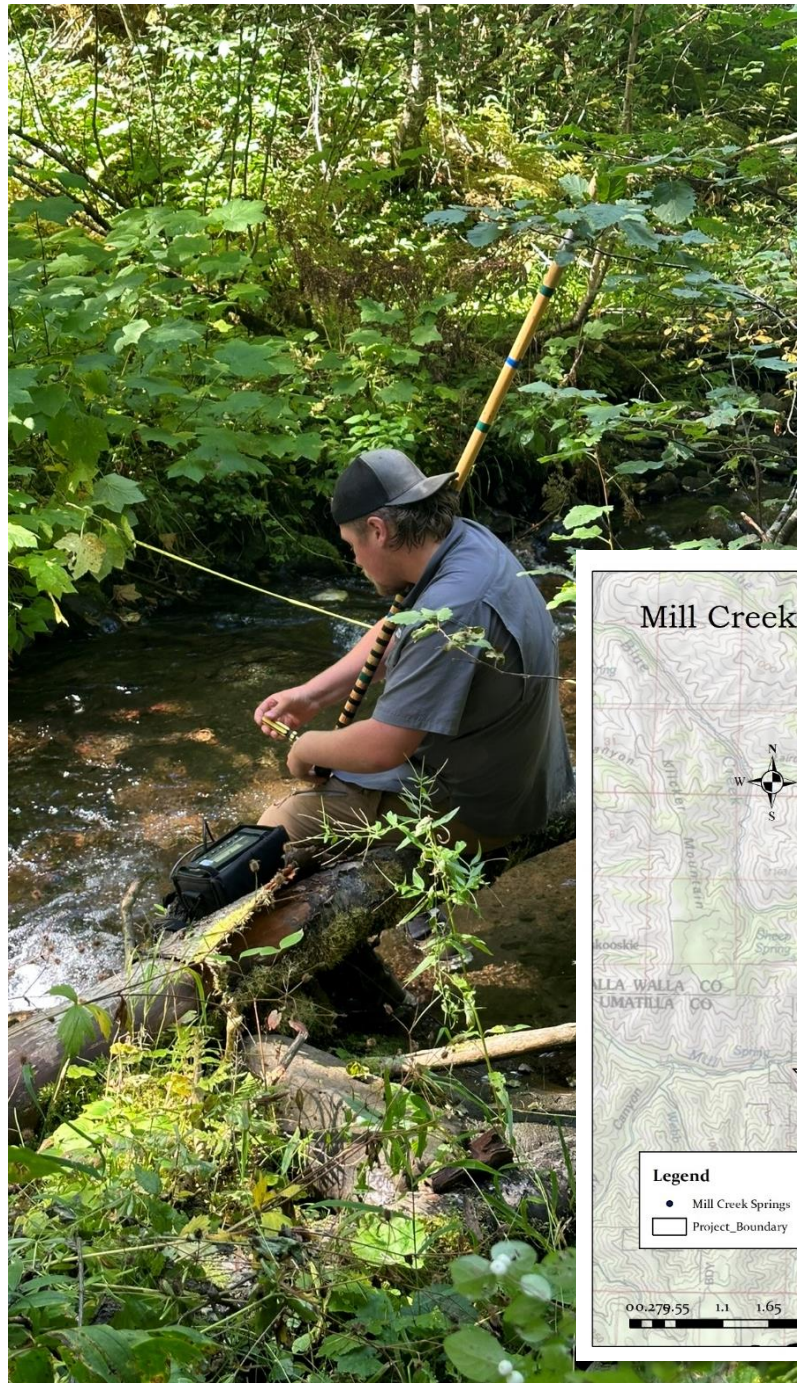
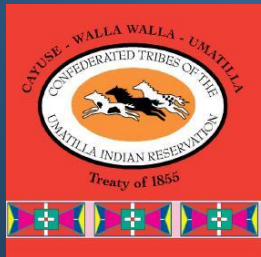
Friday's On Main, Milton-Freewater



2023 Projects Tour

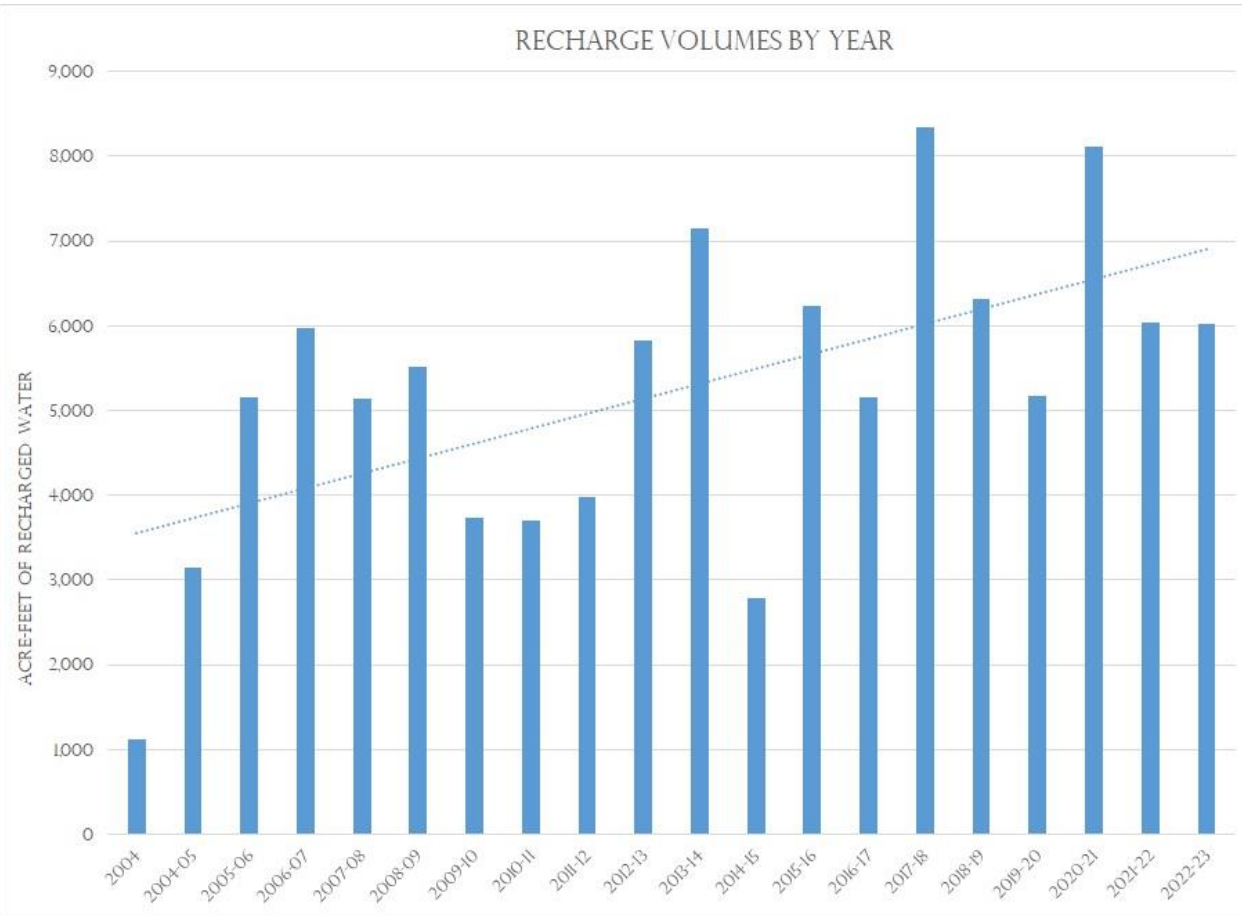
Mill Creek Baseflow Assessment

Funders and Partners



Managed Aquifer Recharge Program

To date the program has recharged
104,554 acre/ft into the gravel aquifer



During the 2022-2023 season, our aquifer recharge efforts were active for a total of 131 days, successfully recharging approximately 6,016 acre-feet of water in the shallow gravel aquifer. This equates to nearly 2 billion gallons of water!



Funders:



And local donations

Strategic Action Plan Update Project

Update the SAP with a ten-year vision

- Communications Plan
- Funding Plan
- Inviting basin partners to participate
- Community involvement
- Completion by the fall of 2024

Funders



Strategic Action Plan

October 2014



Photo Credit: Troy Baker, Walla Walla Basin Watershed Council Employee

Guess who's turning 30!



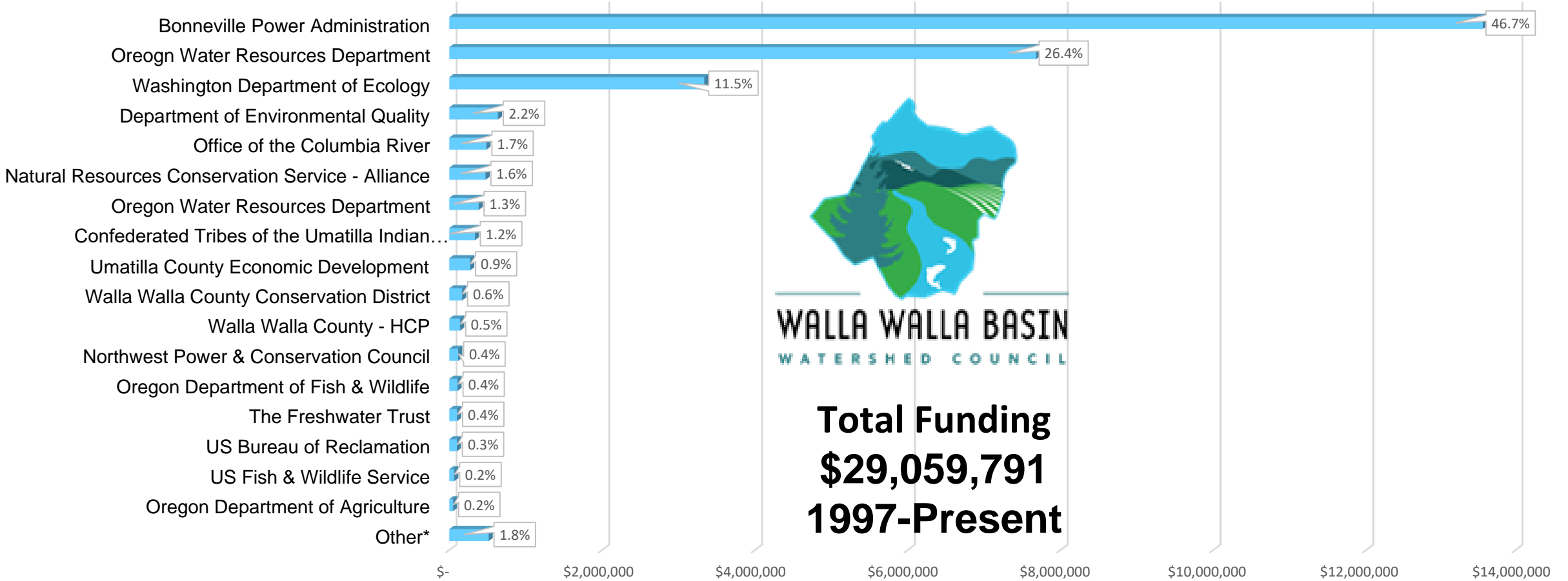
WALLA WALLA BASIN
W A T E R S H E D C O U N C I L

Open House
May 2nd from 3:00 – 7:00 PM

- Celebrating our 30th “birthday”

RiverFest Celebration Dinner
October 26th from 5:00 – 8:00 PM

Funding Partners

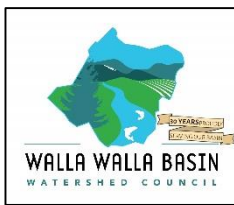


*Other Funding Partners

SOLV
4SOS
RCC
EURUS
Lamb Foundation
Walla Walla County
Meyer Memorial Trust
Bureau of Reclamation
Gray Family Foundation
Wildhorse Foundation

Trout Unlimited
Irrigation Districts
Tri-State Steelheaders
Private Donations
NFWF
Oregon Community Foundation
Powerline Ranch
Washington Department of Health
Walla Walla Watershed Management Partnership

Blue Mountain Community Foundation
Umatilla Basin Watershed Foundation
Milton-Freewater Unified School District
Milton-Freewater Area Foundation
Walla Walla Community College Water Center
Milton-Freewater Water Control District
Aspect
HDR
Washington Watertrust



Blue Mountain
Community
Foundation

Bonneville
POWER ADMINISTRATION



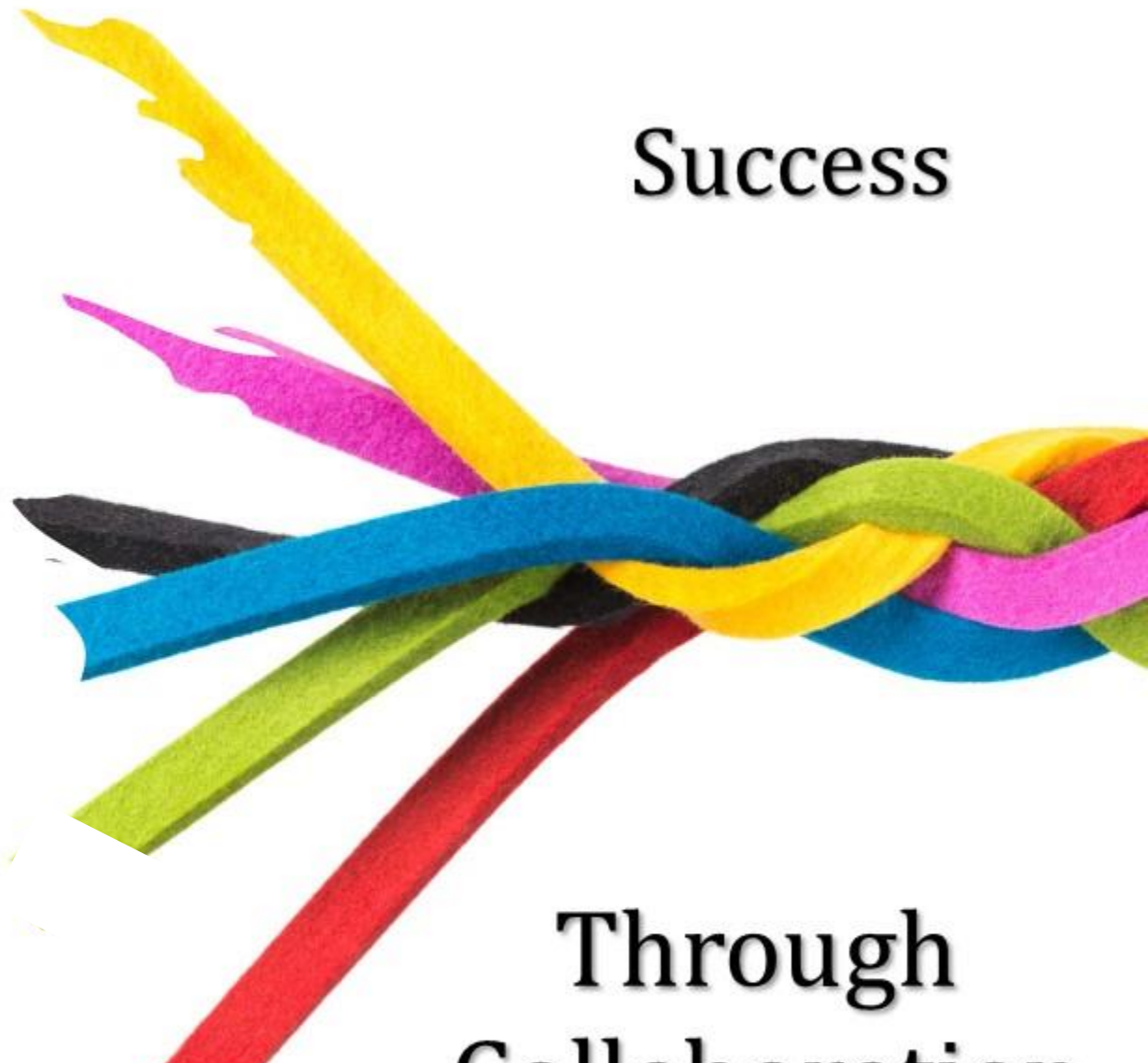
State of Oregon
Department of
Environmental
Quality



OREGON
WATERSHED
ENHANCEMENT BOARD



OREGON
DEPARTMENT OF
AGRICULTURE



Success

Through
Collaboration

And private partners, who can be found listed on our website.