

This map was prepared for Assessment & Taxation purposes only and was NOT prepared nor is it suitable for legal, engineering or surveying purposes.

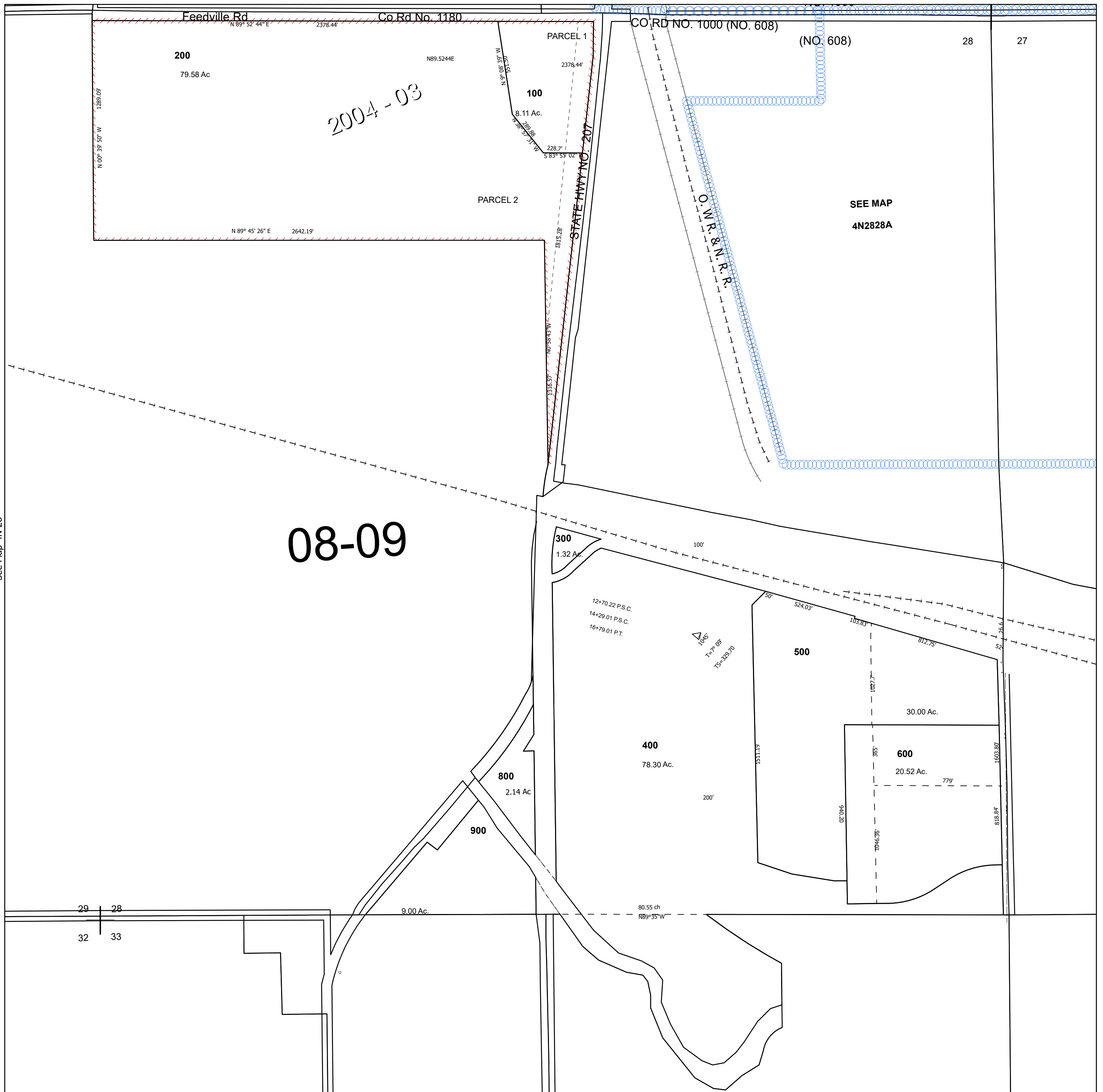
Cancelled Tax Lots

SEC 28 T4N R28E WM UMATILLA COUNTY

4N 28 28

SCALE 1" = 400'

See Map 4N 28 21D



2004-03

08-09

SEE MAP
4N2828A

See Map 4N 28

See Map 4N 28 27C

Revised 3/26/2026

See Map 4N 28 33A

4N 28 28