

This map was prepared for Assessment & Taxation purposes only and was NOT prepared nor is it suitable for legal, engineering or surveying purposes.

Cancelled Tax Lots

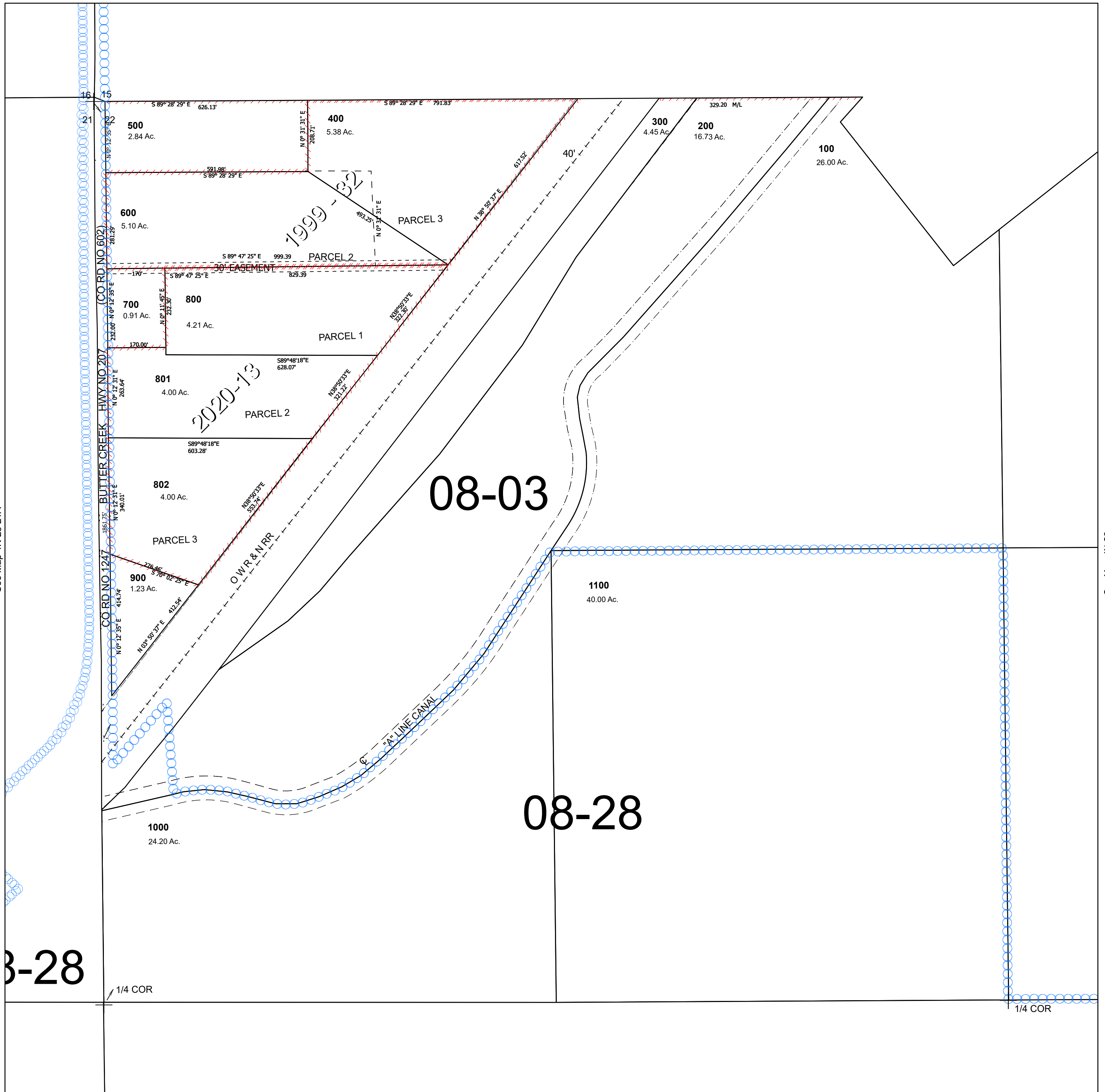
NW 1/4 SEC 22 T4N R28E WM UMATILLA COUNTY

SCALE 1" = 200'

4N 28 22B

Hermiston

See Map 4N 28 15



See Map 4N 28 21A

See Map 4N 28