

This map was prepared for Assessment & Taxation purposes only and was NOT prepared nor is it suitable for legal, engineering or surveying purposes.

Cancelled Tax Lots

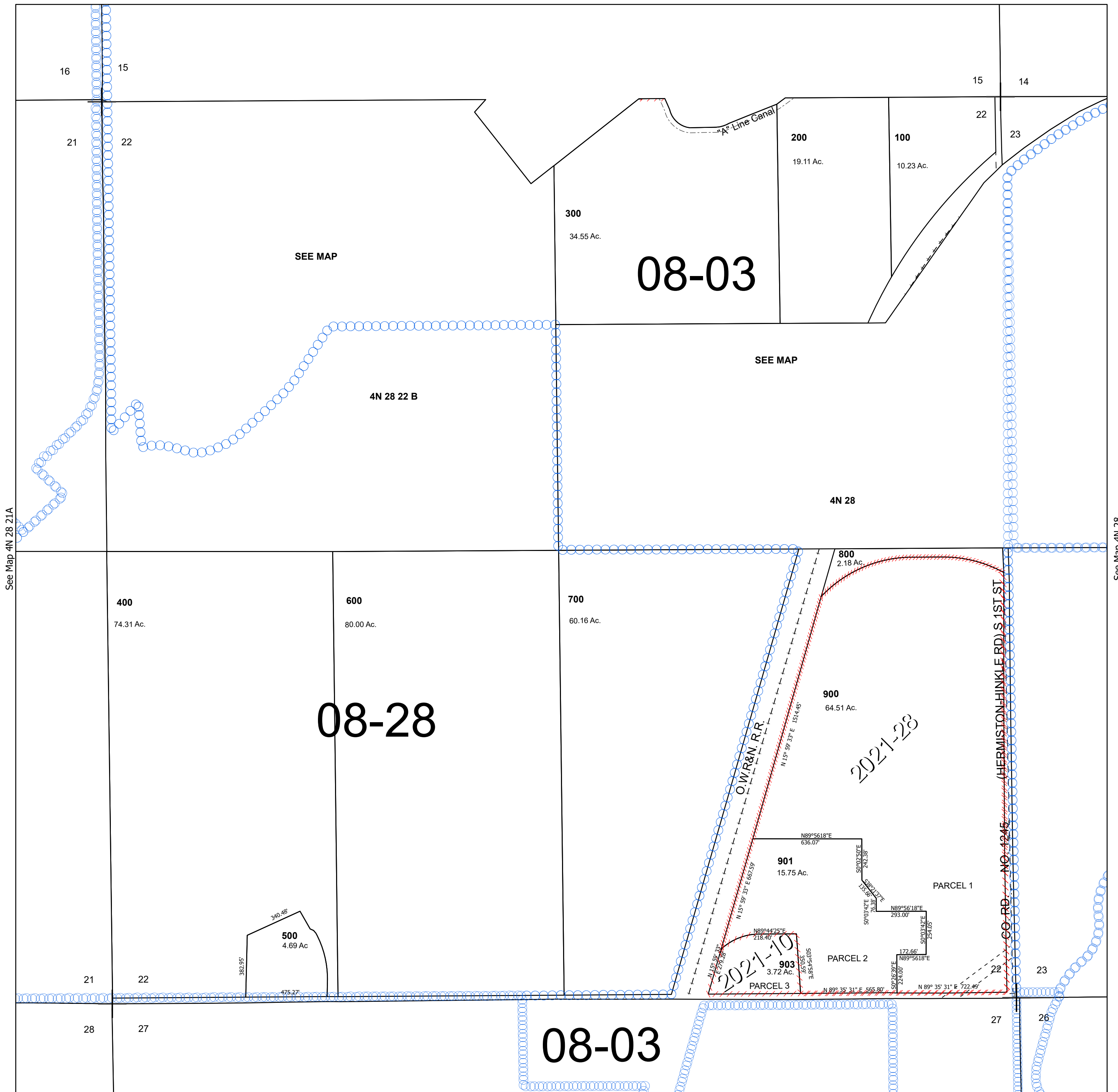
SEC 22 T4N R28E WM UMATILLA COUNTY

4N 28 22

Hermiston

SCALE 1" =400'

See Map 4N 28 15



See Map 4N 28 21A

See Map 4N 28

Revised 1/2/2026

See Map 4N 28

4N 28 22