

This map was prepared for Assessment & Taxation purposes only and was NOT prepared nor is it suitable for legal, engineering or surveying purposes.

Cancelled Tax Lots

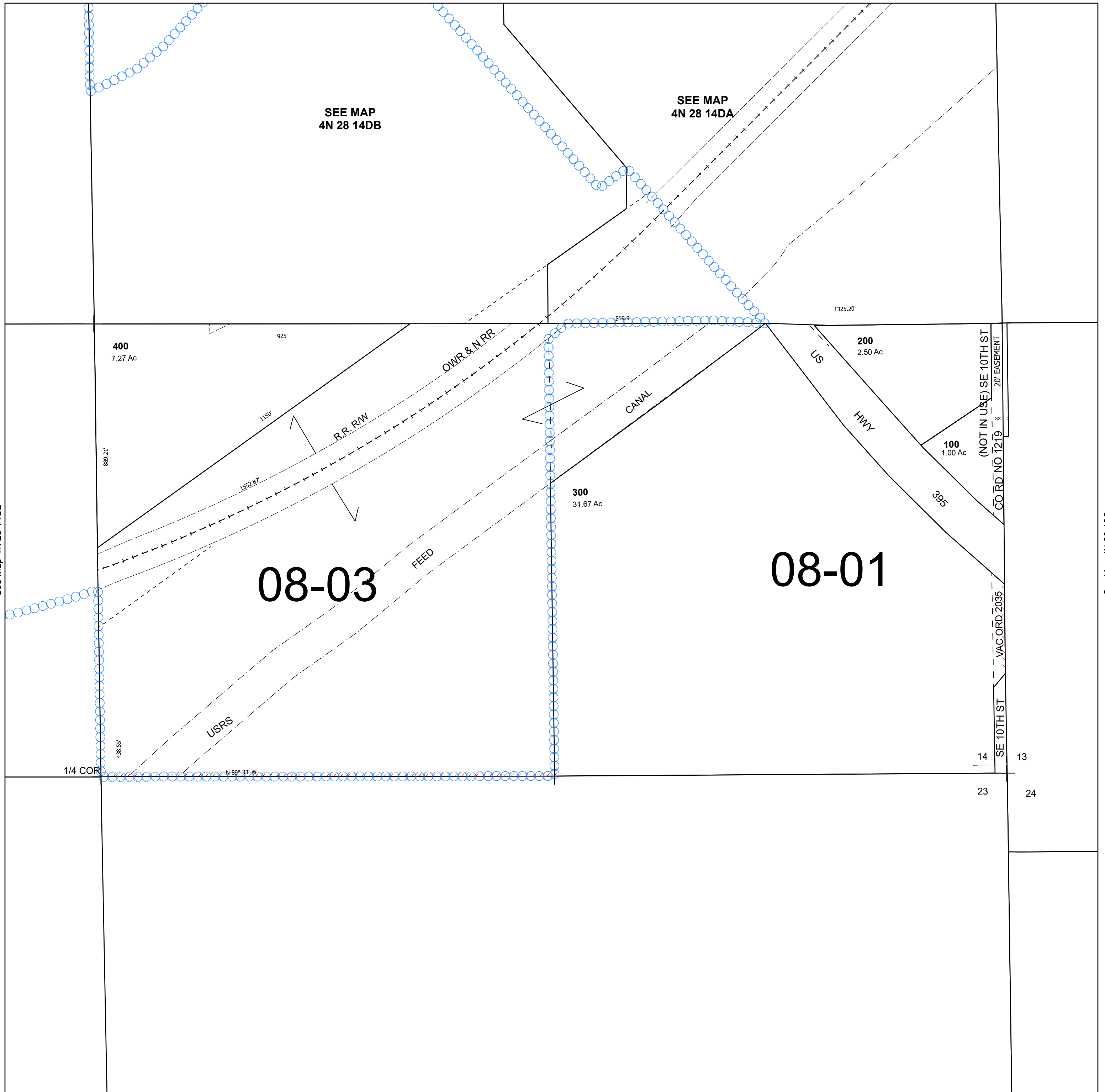
SE 1/4 SEC 14 T4N R28E WM UMATILLA COUNTY

4N 28 14D

Hermiston

SCALE 1" = 200'

See Map 4N 28 14DA



See Map 4N 28 14CD

See Map 4N 28 13C

Revised 1/7/2026

See Map 4N 28 23

4N 28 14D