

This map was prepared for Assessment & Taxation purposes only and was NOT prepared nor is it suitable for legal, engineering or surveying purposes.

# SW 1/4 SEC 12 T4N R28E WM UMATILLA COUNTY

# 4N 28 12C

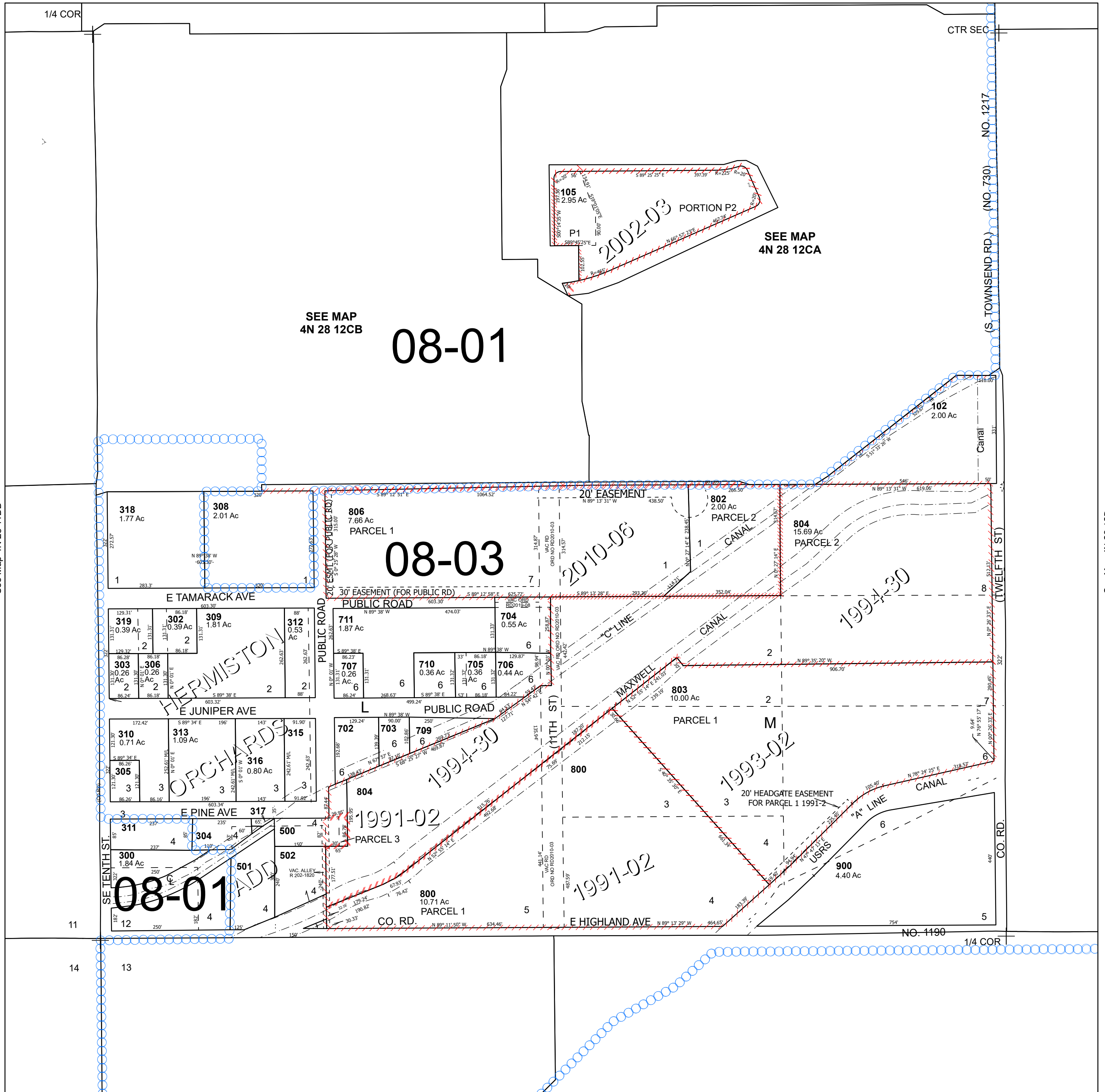
## Hermiston

### SCALE 1" = 200'

See Map 4N 28 12CA

#### Cancelled Tax Lots

100	600
101	700
103	701
104	708
200	801
301	805
307	
314	
400	
503	



See Map 4N 28 11DD

See Map 4N 28 12D