

This map was prepared for Assessment & Taxation purposes only and was NOT prepared nor is it suitable for legal, engineering or surveying purposes.

Cancelled Tax Lots
4700

SE 1/4 NW 1/4 SEC 10 T4N R28E WM

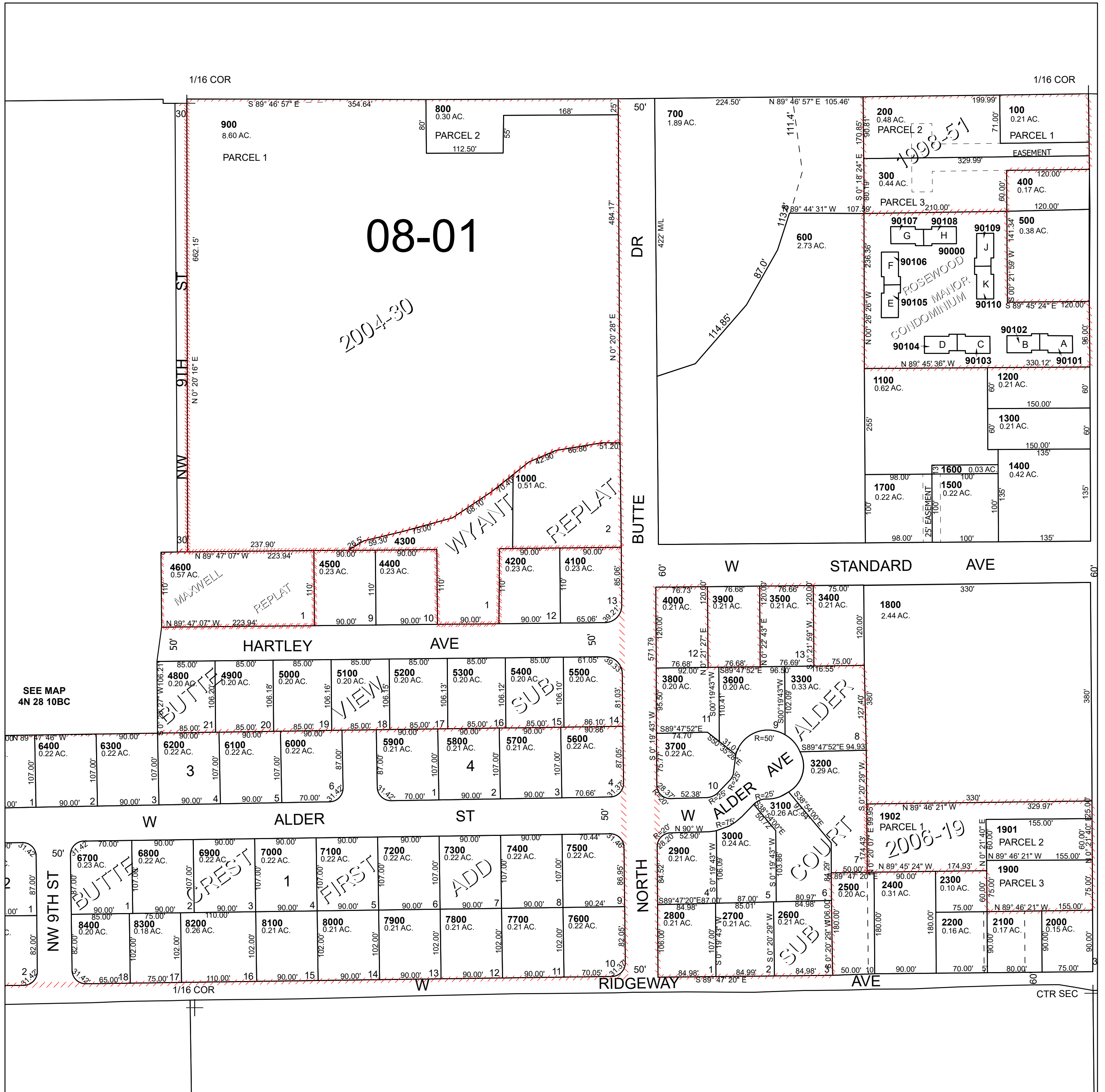
UMATILLA COUNTY

SCALE 1" = 100'

Hermiston

4N 28 10BD

See Map 4N 28 10B



See Map 4N 28 10BC

See Map 4N 28 10AC