

This map was prepared for Assessment & Taxation purposes only and was NOT prepared nor is it suitable for legal, engineering or surveying purposes.

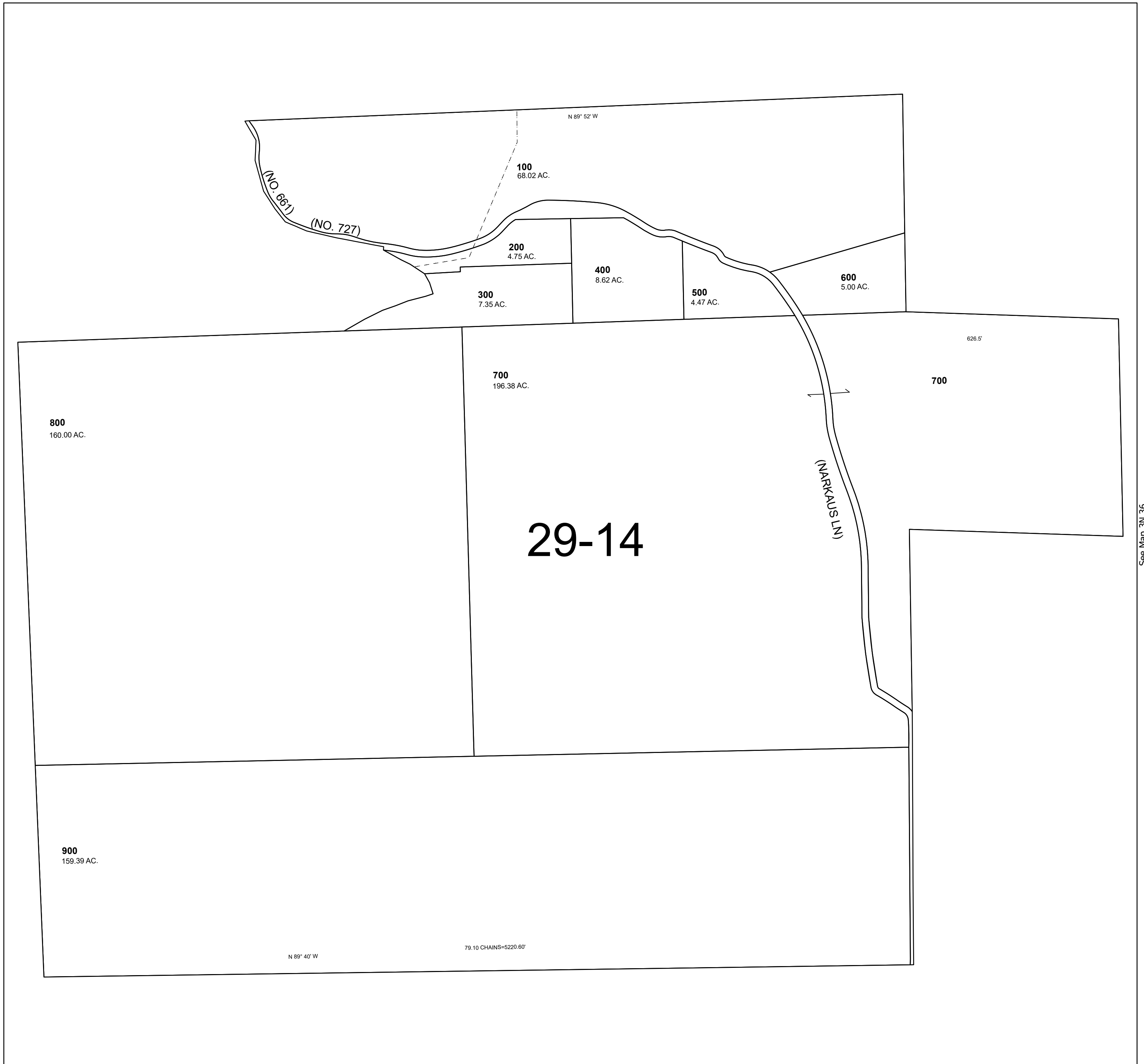
Cancelled Tax Lots

# SEC 11 T3N R36E WM UMATILLA COUNTY

## 3N 36 11

SCALE 1" =400'

See Map 3N 36



Revised 5/27/2026

See Map 3N 36

## 3N 36 11