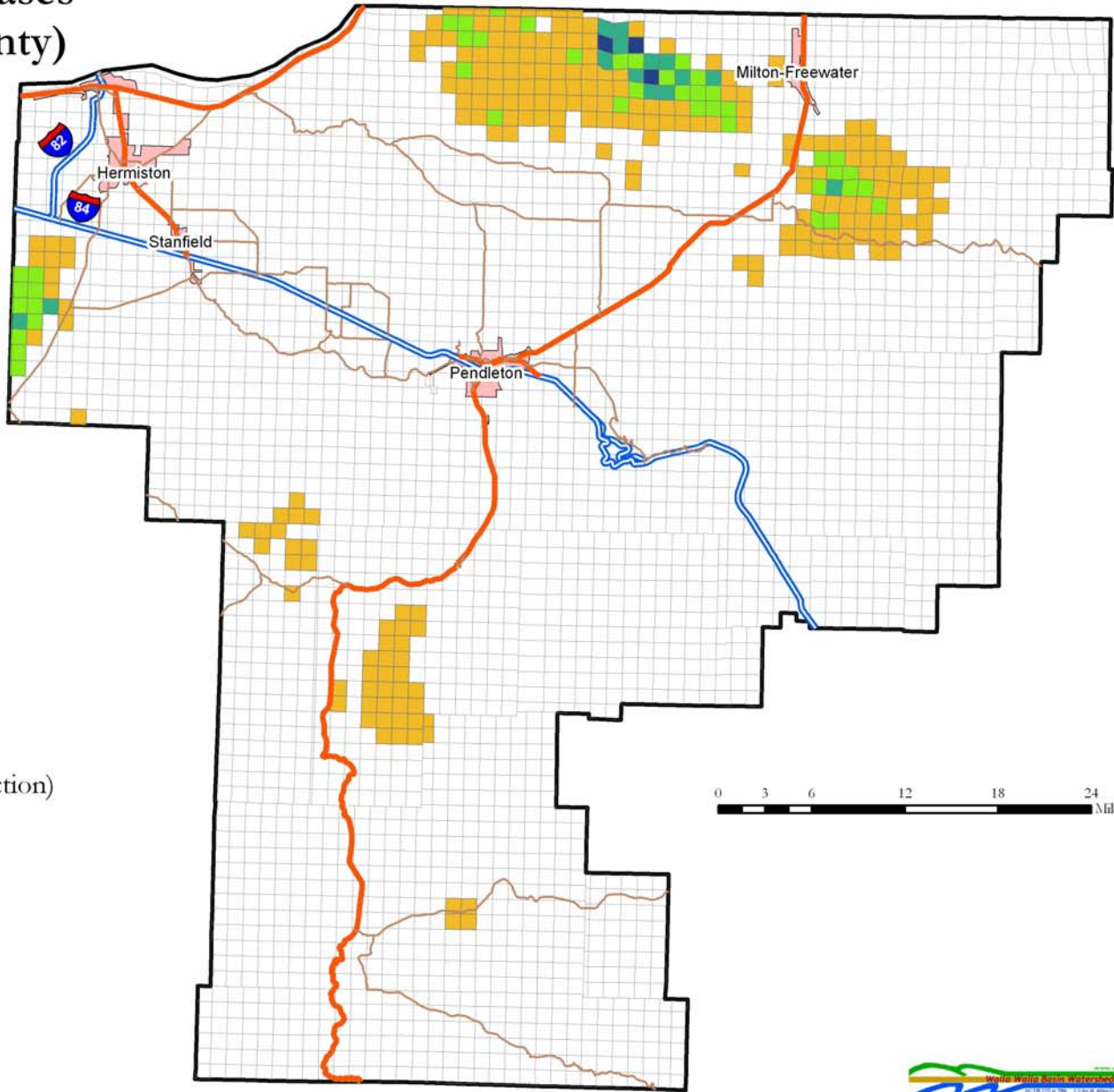








Wind Power Leases (Umatilla County)

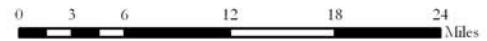


Legend

Wind Power Leases (per section)

Leases

-  0
-  1 - 3
-  4 - 6
-  7 - 13
-  14 - 22
-  UMA County City



Windpower Leases (per section) (Umatilla County)



Legend

Wind Power Leases (per section)

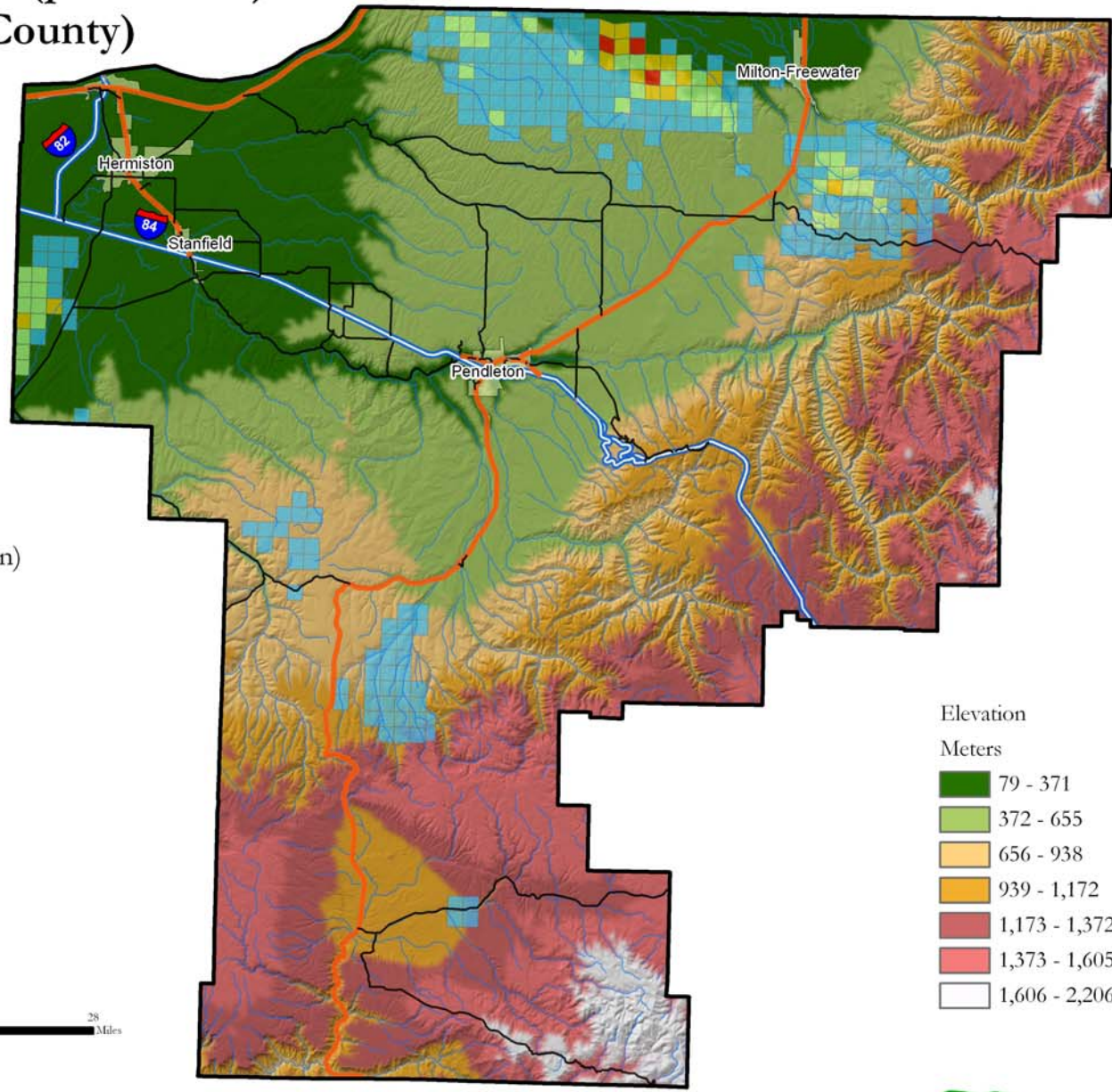
Leases

- 1 - 3
- 4 - 6
- 7 - 13
- 14 - 22

Named Streams

Cities


County Boundary



- Elevation
Meters
- 79 - 371
 - 372 - 655
 - 656 - 938
 - 939 - 1,172
 - 1,173 - 1,372
 - 1,373 - 1,605
 - 1,606 - 2,206

Ecoregions (Umatilla County)

Legend

 County Boundary

 Cities

Wind Power Leases (per section)

Leases

 0

 1 - 3

 4 - 6

 7 - 13

 14 - 22


Ecoregion (Oregon Natural Heritage Program)

NAME

 Canyons and Dissected Highlands


 Cold Basins

 Deep Loess Foothills


 John Day/ Clarno Highlands


 Maritime-Influenced Zone

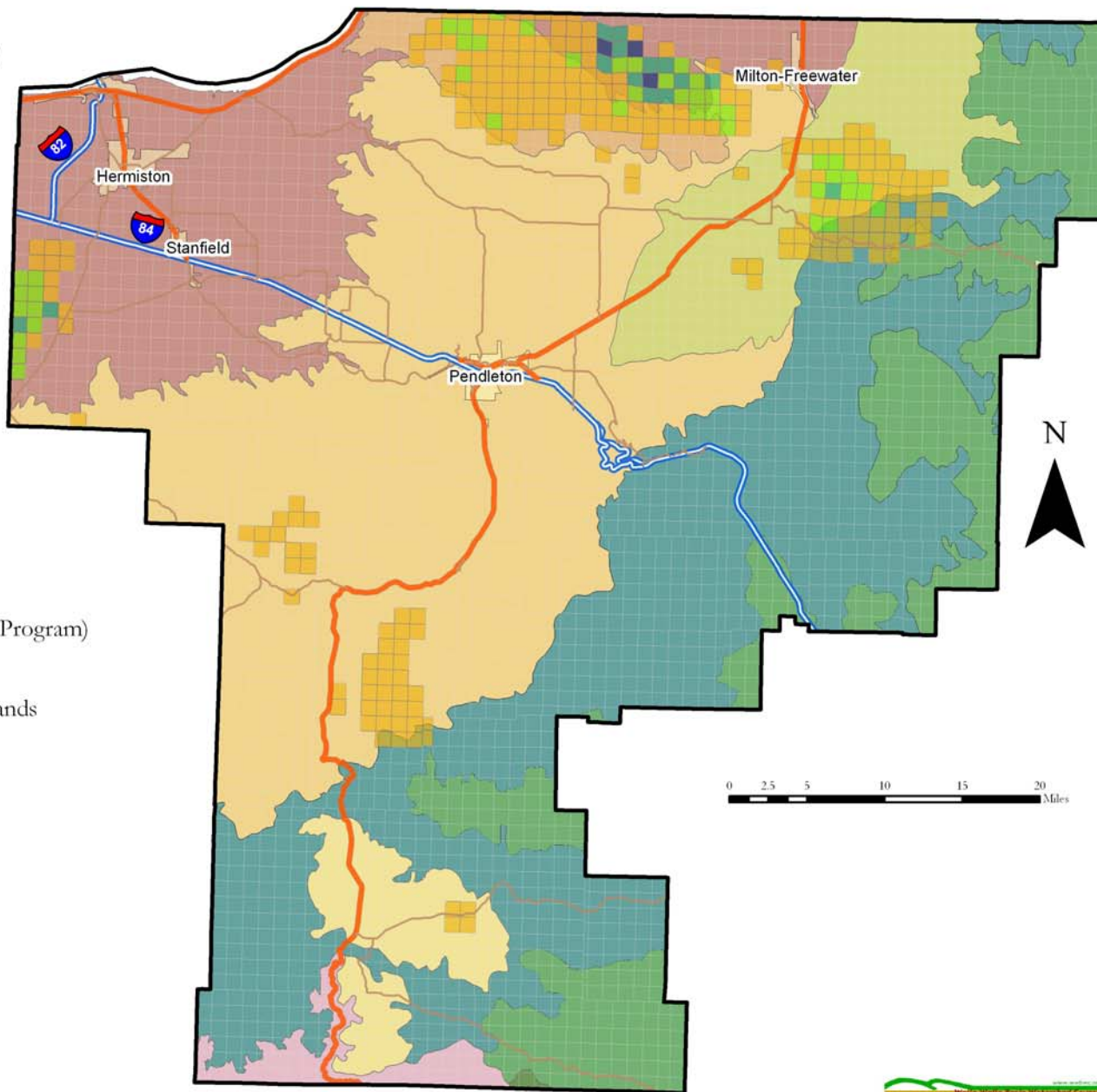
 Melange

 Mesic Forest Zone

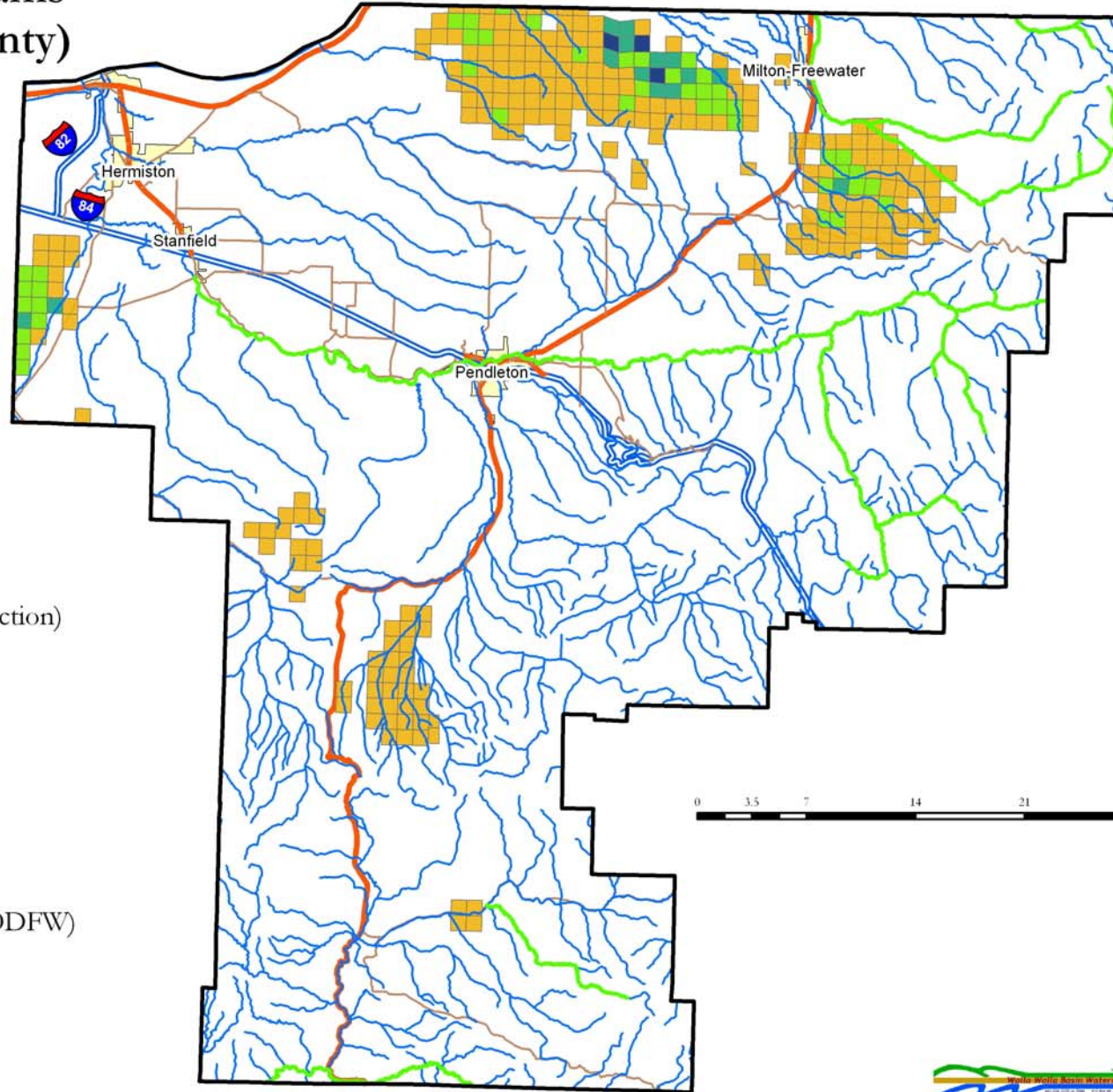
 Pleistocene Lake Basins

 Umatilla Plateau

 Yakima Folds



Bulltrout Streams (Umatilla County)



Legend

Wind Power Leases (per section)

Leases

0

1 - 3

4 - 6

7 - 13

14 - 22

Bulltrout Streams (ODFW)

Named Streams

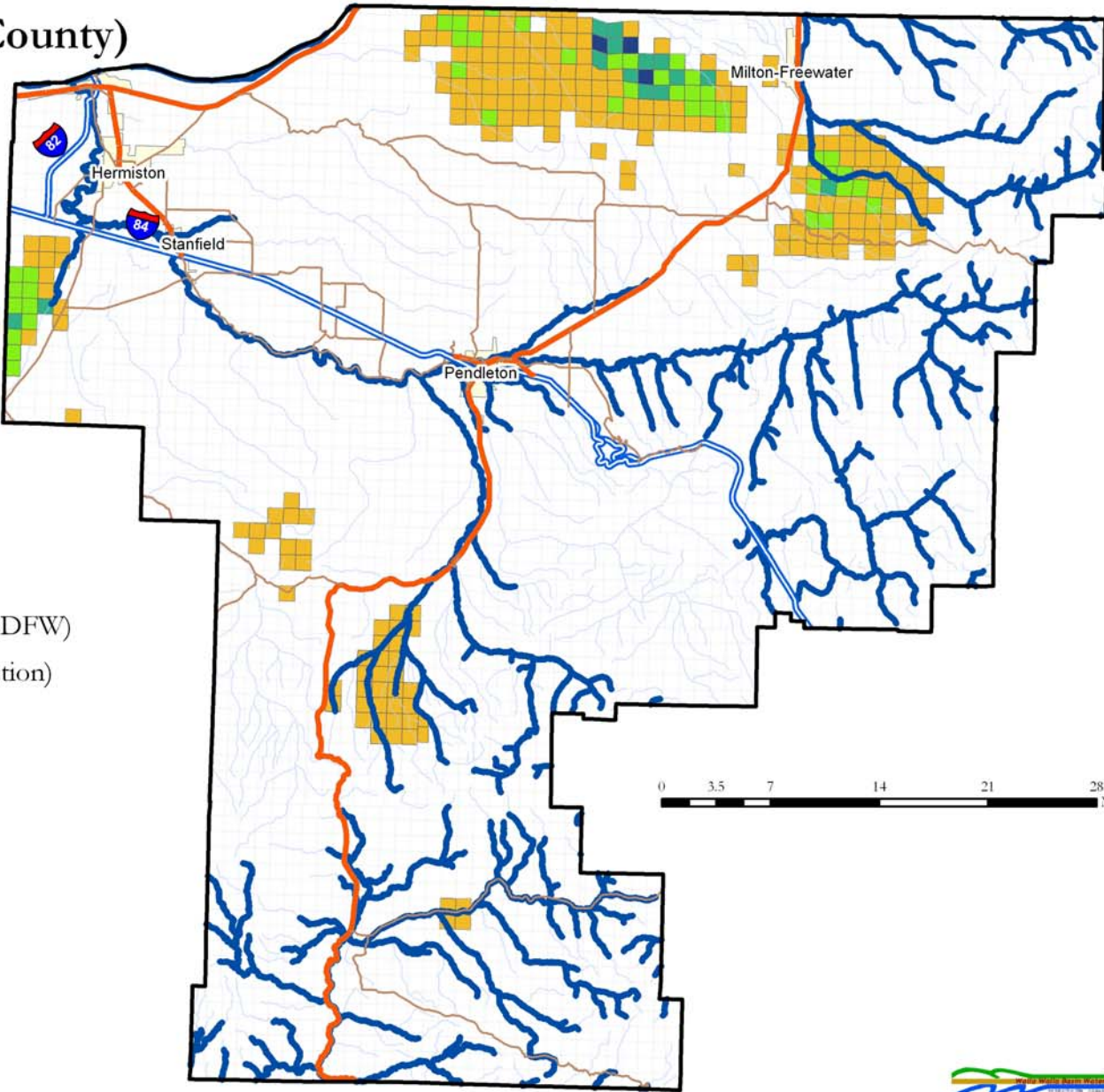
Cities

County Boundary








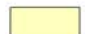

0 3.5 7 14 21 28 Miles

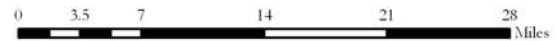


Steelhead Streams-Rivers (Umatilla County)

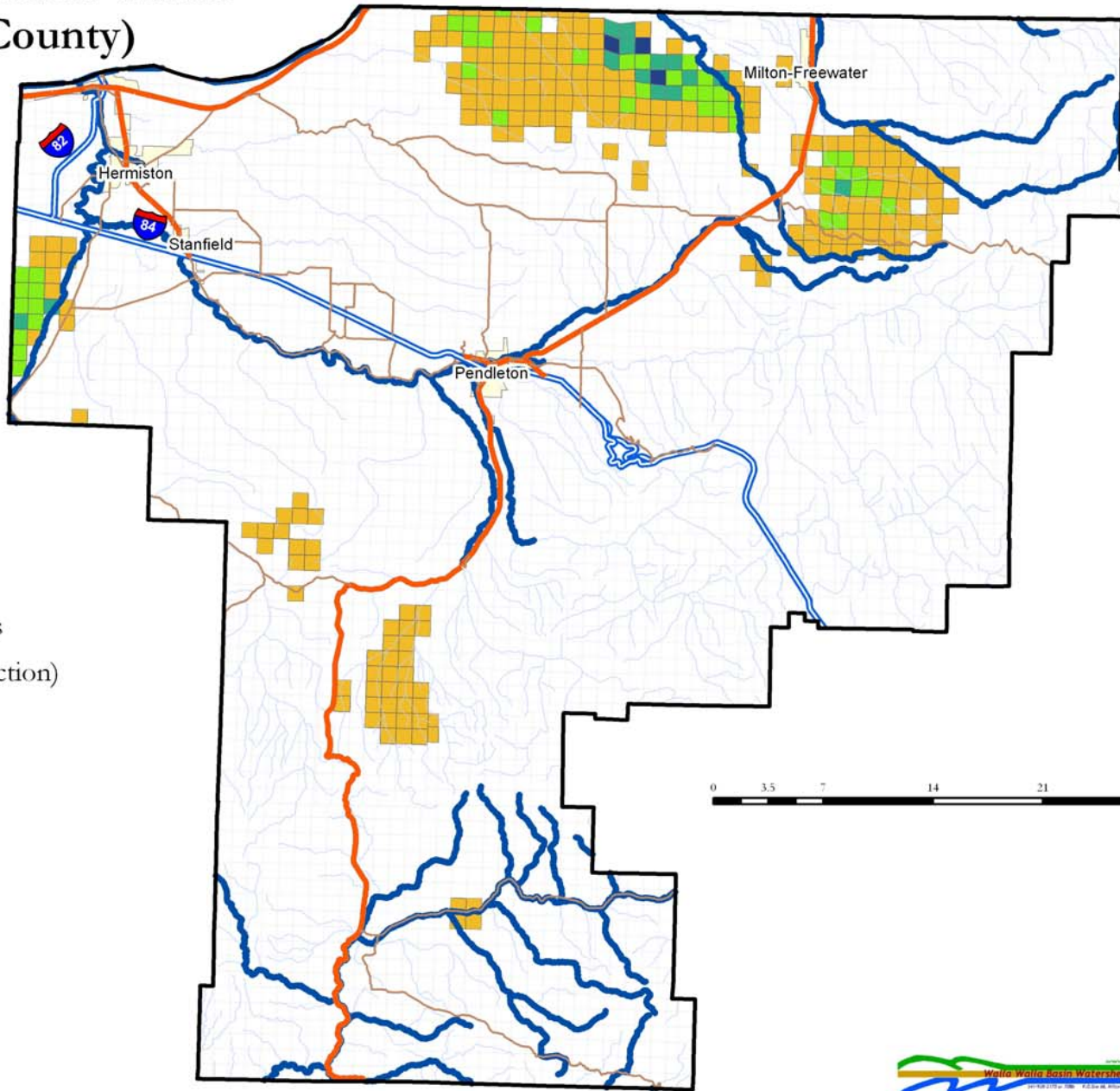


Legend

-  Steelhead Streams (ODFW)
- Wind Power Leases (per section)
- Leases
-  0
-  1 - 3
-  4 - 6
-  7 - 13
-  14 - 22
-  Named Streams
-  Cities
-  County Boundary



ODEQ 303D Streams-Rivers (Umatilla County)

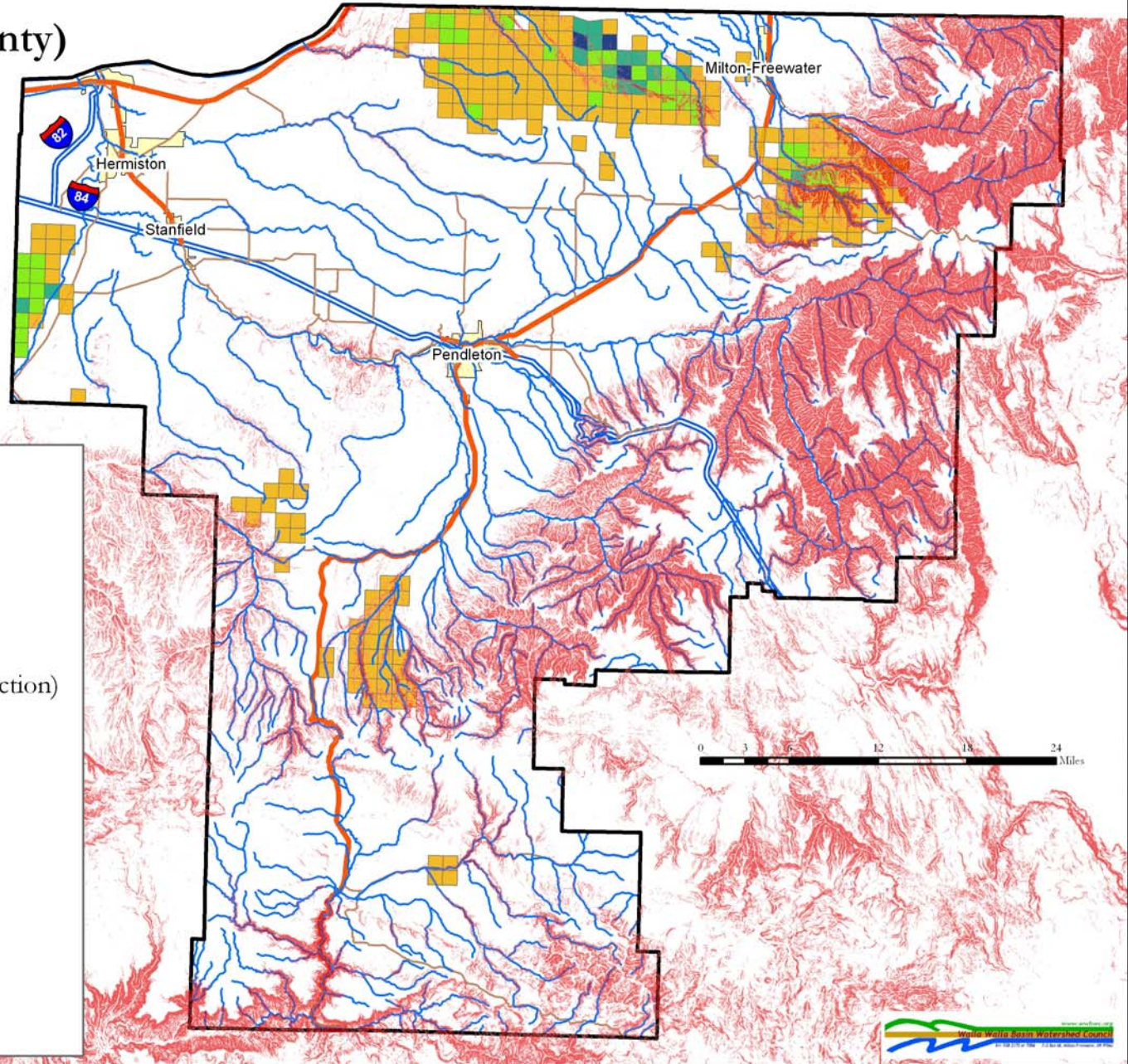


Legend

- 303D Streams-Rivers
- Wind Power Leases (per section)
- Leases
 - 0
 - 1 - 3
 - 4 - 6
 - 7 - 13
 - 14 - 22
- Named Streams
- Cities
- County Boundary

0 3.5 7 14 21 28 Miles

Slopes (Umatilla County)



Legend

Slopes

- 0 - 25%
- 26 - 40%
- 41% +

Wind Power Leases (per section)

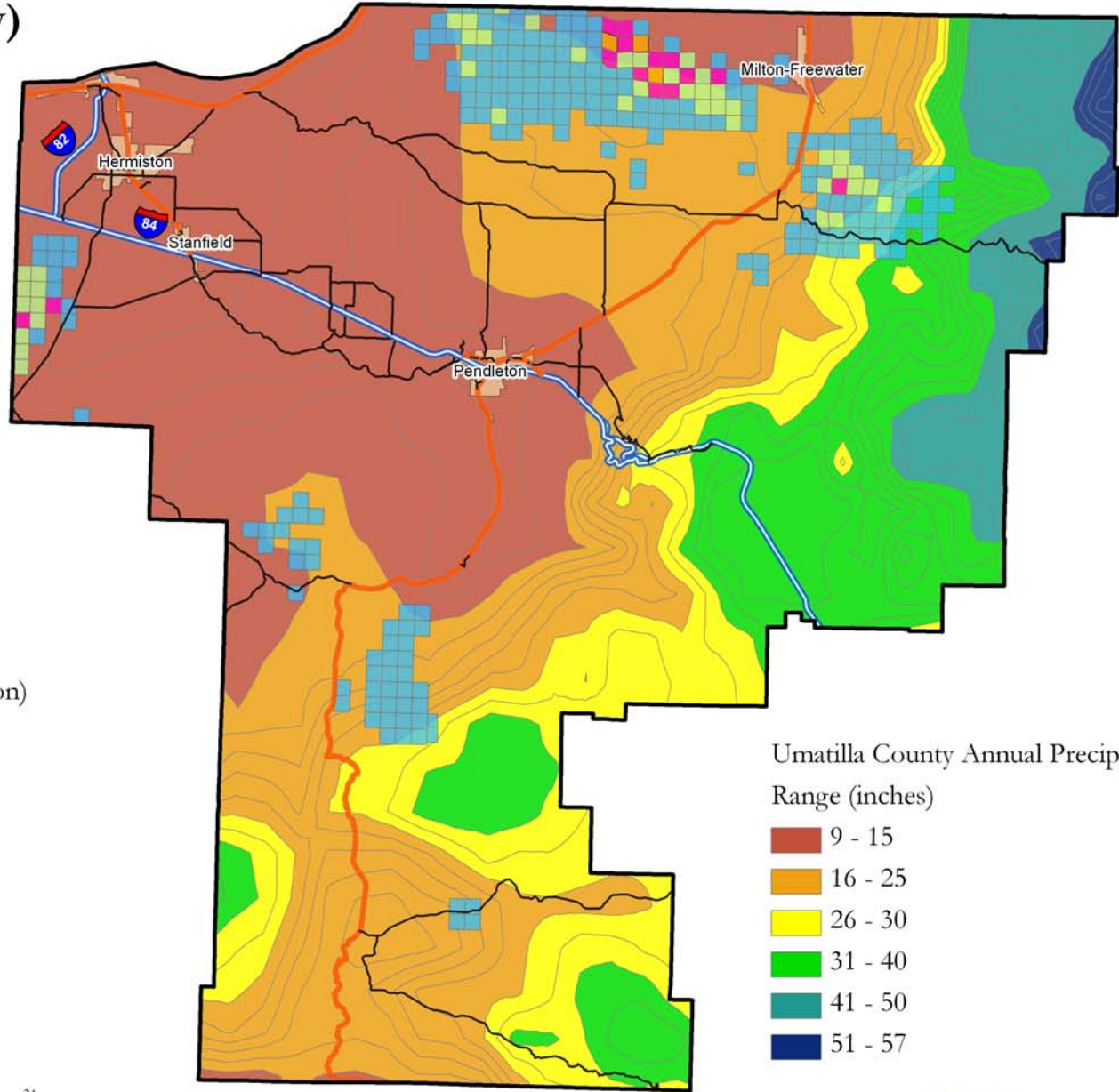
Leases

- 0
- 1 - 3
- 4 - 6
- 7 - 13
- 14 - 22

- Cities
- County Boundary



Annual Precipitation (Umatilla County)



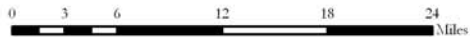
Legend

Wind Power Leases (per section)
Leases

- 1 - 3
- 4 - 6
- 7 - 13
- 14 - 22
- Cities
- County Boundary

Umatilla County Annual Precipitation
Range (inches)

- 9 - 15
- 16 - 25
- 26 - 30
- 31 - 40
- 41 - 50
- 51 - 57



Development of a Statewide Erosion Vulnerability Screening Tool for Oregon

Robert Hickey¹, Erick Burns^{2,3}, John Bolte³, and Diana Walker²

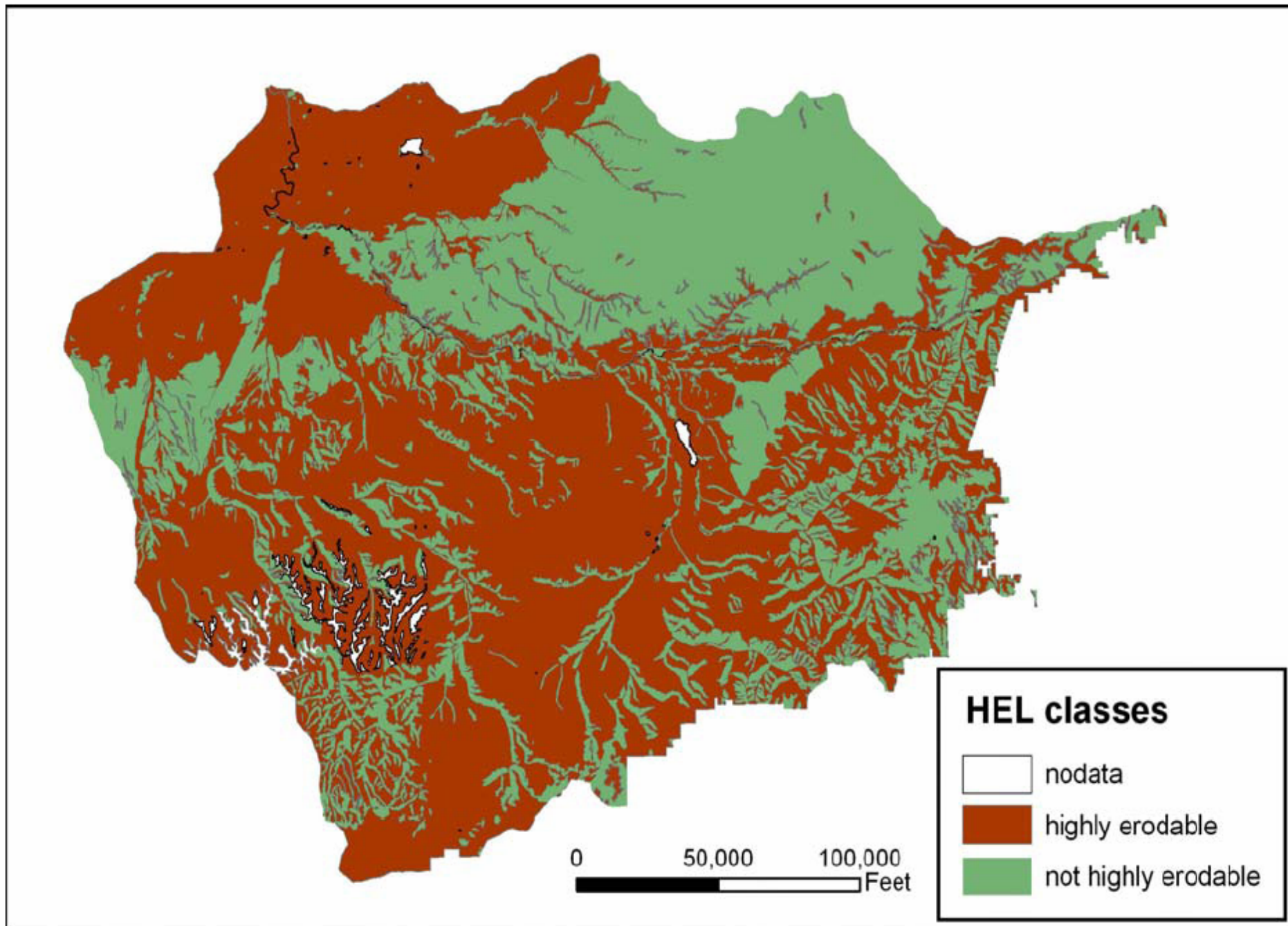
¹Department of Geography and Land Studies
Central Washington University
Ellensburg, WA 98926

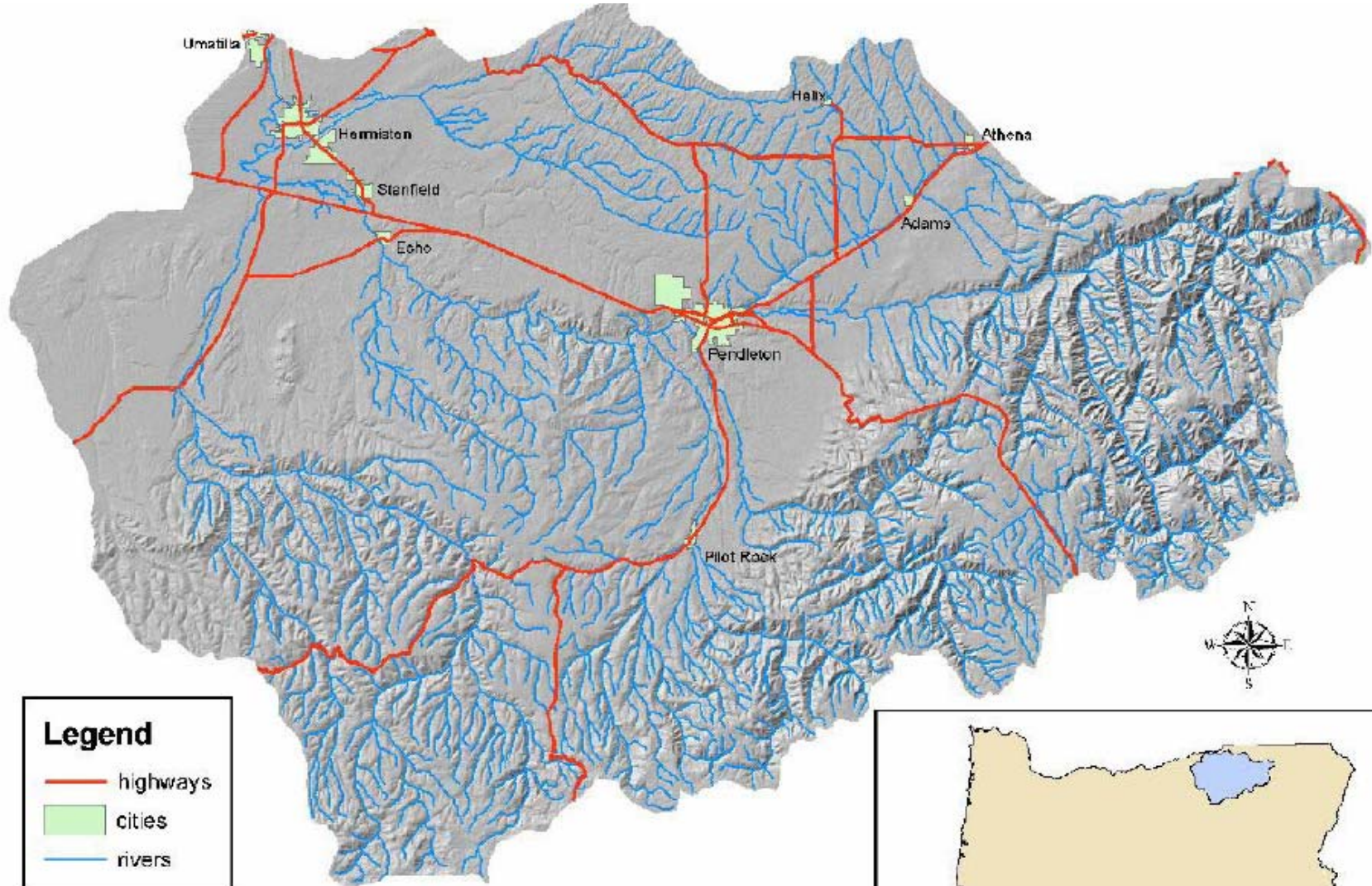
²Geology and Geophysics, University of Calgary
2500 University Drive, Northwest
Calgary, Alberta, T2N 1N4 Canada

³Oregon Department of Agriculture
Natural Resources Division
635 Capitol Street NE
Salem, Oregon 97301-2532

Keywords: erosion, modeling, RUSLE, soil, water quality, planning.

Method: soil type, slope angle, slope length, rainfall zone

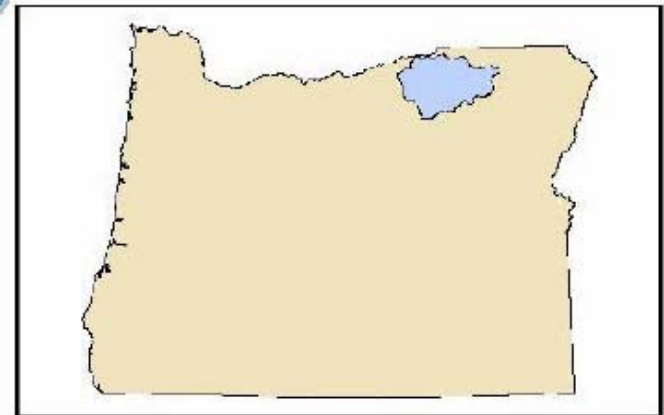




Legend

- highways
- cities
- rivers

0 25,000 50,000 75,000 100,000 Feet



Mid-Columbia Steelhead Recovery Plan

Strategies for Umatilla/Walla Walla Population include:

- restore altered hydrograph
- improve water quality
- A key action listed to help accomplish these strategies:
 - Employ BMPs to road management

Erosion mitigation ideas

- Limit towers and roads to non highly erodible lands
- Access roads from Highway 204, Highway 74
- Utilize USFS road construction Best Management Practices
- Comply with County Seasonal road closures
- Adequate bonding to restore roads and tower pads to prior land use (farm, range, or habitat)
- Stockpile soils from construction away from slopes, streams, and wetlands

Fire Risk (ODF) (Umatilla County)

