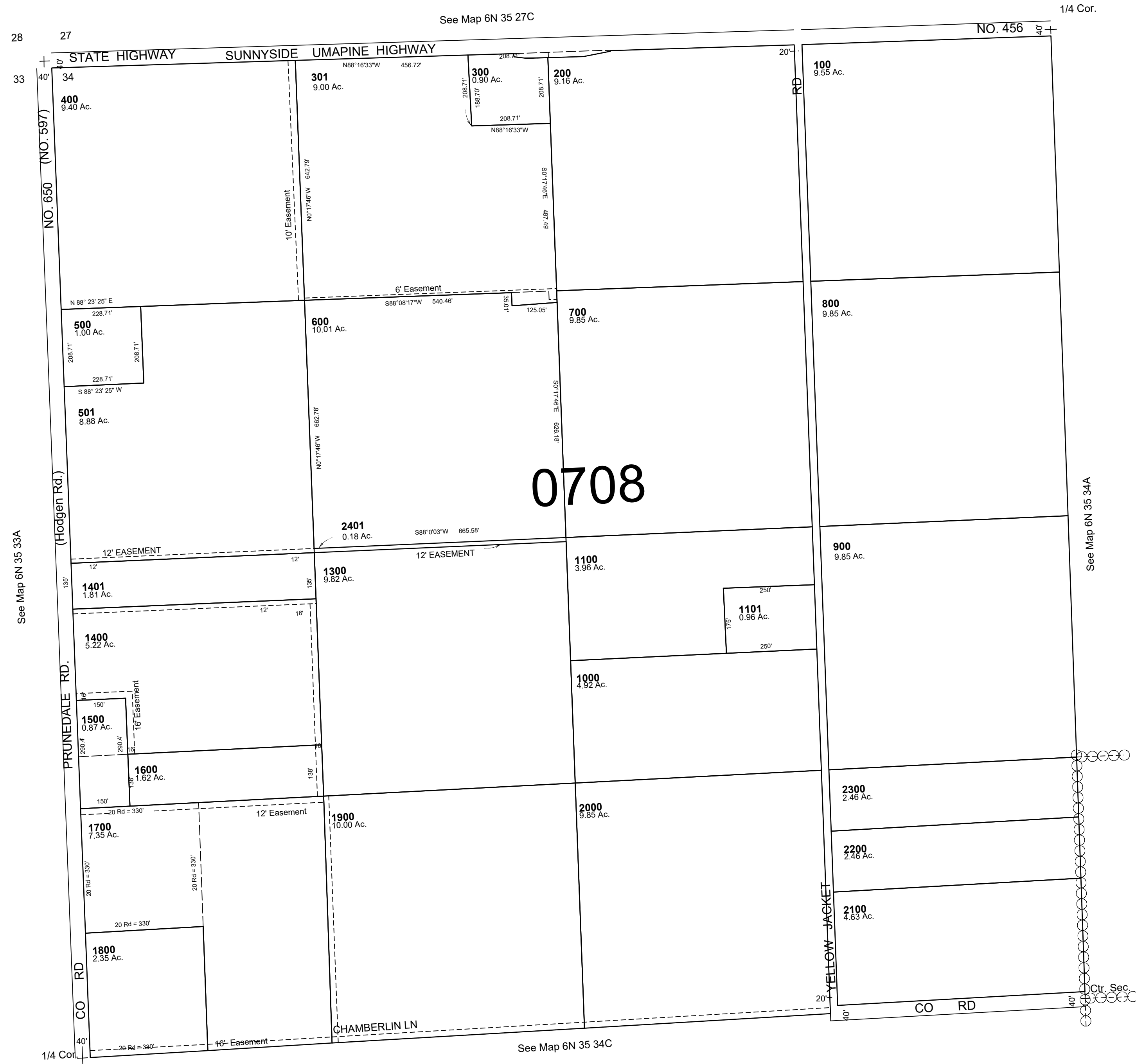


This map was prepared for Assessment & Taxation purposes only and was NOT prepared for nor is it suitable for legal, engineering or surveying purposes.

NW 1/4 SEC 34 T6N R35E WM  
UMATILLA COUNTY  
SCALE 1"=200'

6N 35 34B  
AERIAL PHOTO NO. 6P-62



REVISED: 09-8-2021

6N 35 34B