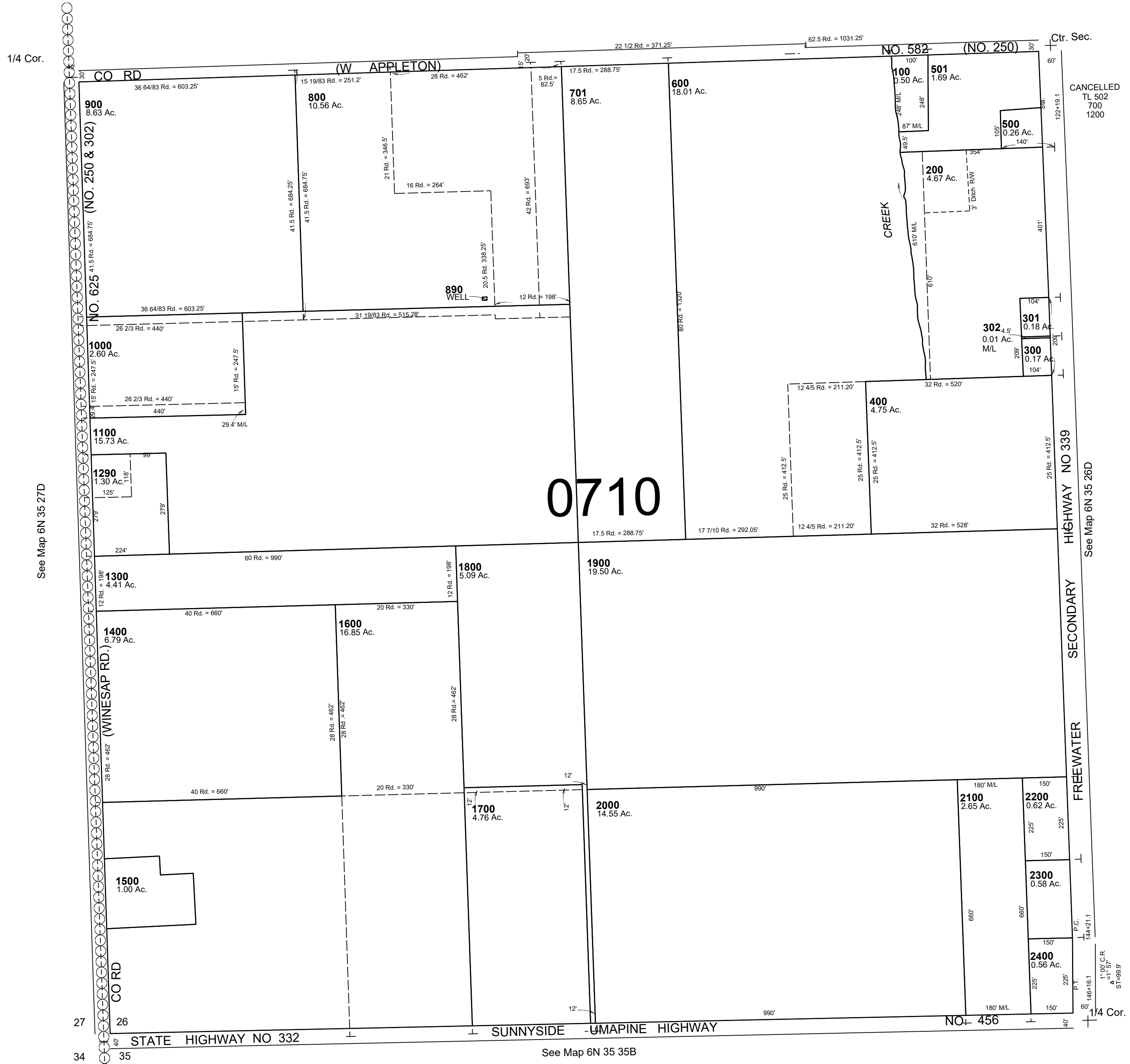


This map was prepared for Assessment & Taxation purposes only and was NOT prepared nor is it suitable for legal, engineering or surveying purposes.

SW 1/4 SEC 26 T6N R35E WM UMATILLA COUNTY SCALE 1"=200'

6N 35 26C
AERIAL PHOTO NO. NZ 6P-63

See Map 6N 35 26B



See Map 6N 35 27D

See Map 6N 35 26B

0710

Revised:09-09-2021

6N 35 26C