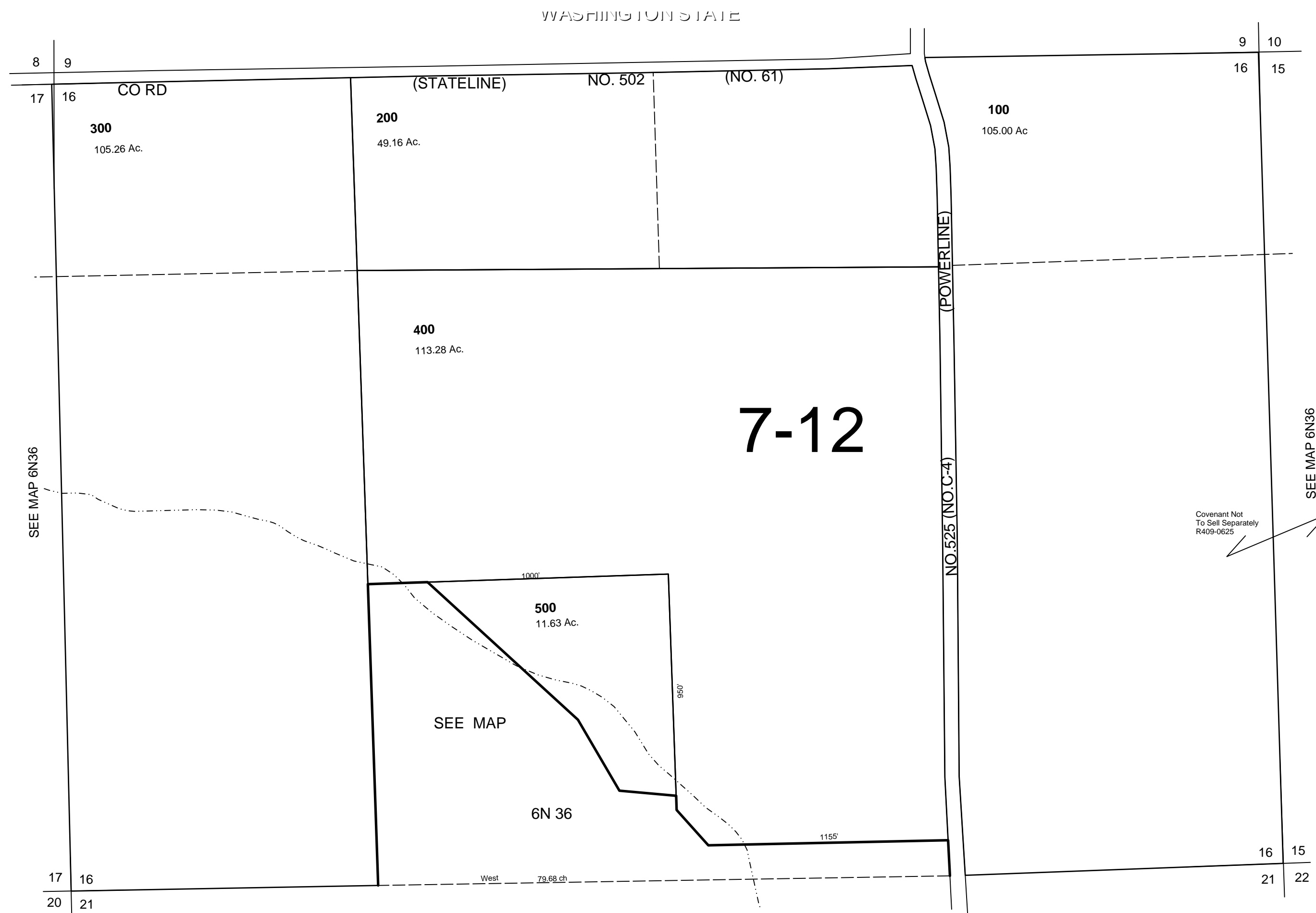


This map was prepared for Assessment & Taxation purposes only and was NOT prepared nor is it suitable for legal, engineering or surveying purposes.

SEC 16 T6N R36E WM
UMATILLA COUNTY
SCALE 1"=400'

6N 36 16

AERIAL PHOTO NO. NZ 6P 12-16 & 65-68



Revised: 4/08/11

6N 36 16