

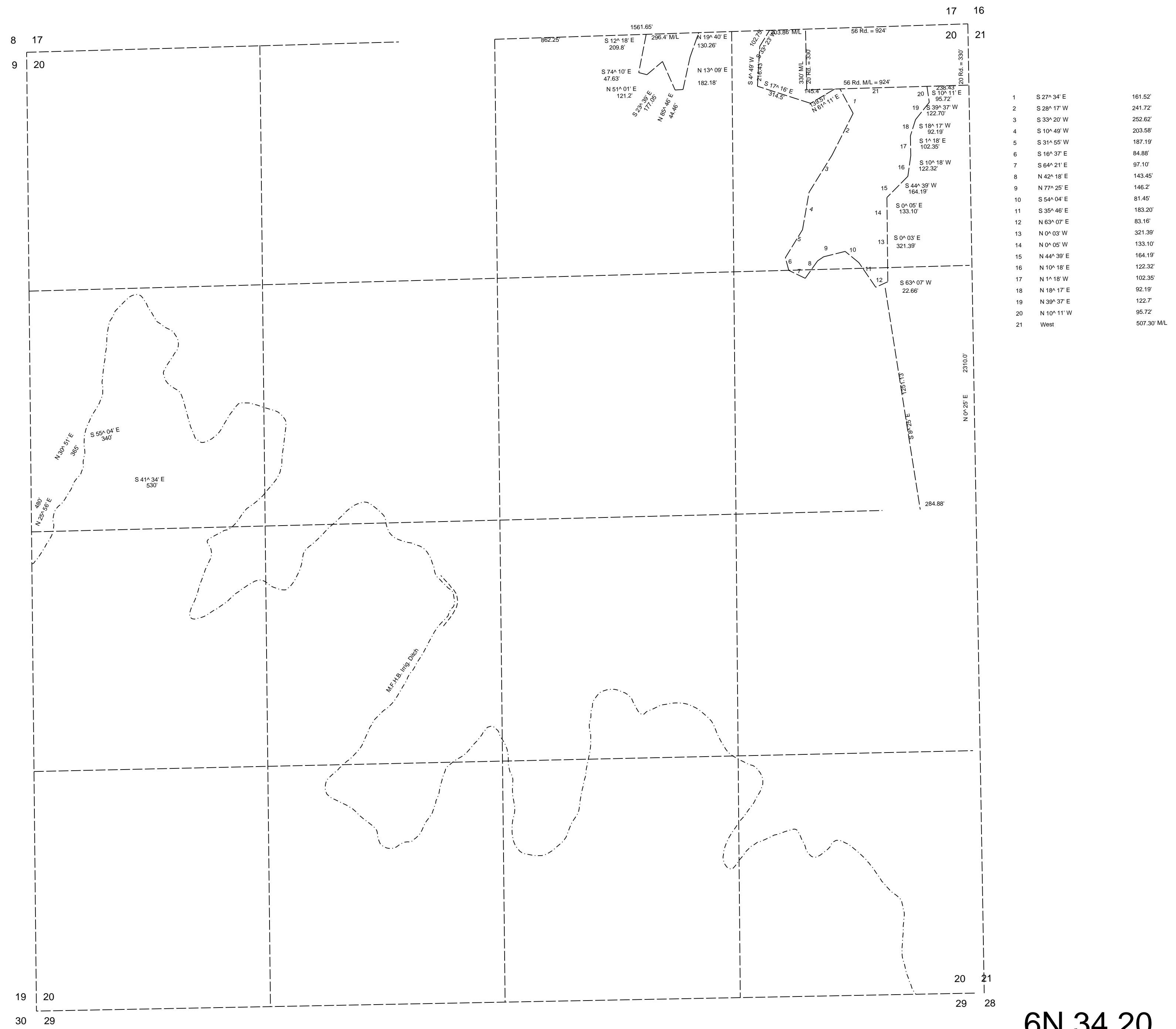
This map was prepared for assessment purposes

SEC 20 T6N R34E WM
UMATILLA COUNTY
SCALE 1"=400'

10/04/06

6N 34 20
DETAIL MAP

AERIAL PHOTO NO. 6P-26



1	S 27° 34' E	161.52
2	S 28° 17' W	241.72
3	S 33° 20' W	252.62
4	S 10° 49' W	203.58
5	S 31° 55' W	187.19
6	S 16° 37' E	84.88
7	S 64° 21' E	97.10
8	N 42° 18' E	143.45
9	N 77° 25' E	146.2
10	S 54° 04' E	81.45
11	S 35° 46' E	183.20
12	N 63° 07' E	83.16
13	N 0° 03' W	321.39
14	N 0° 05' W	133.10
15	N 44° 39' E	164.19
16	N 10° 18' E	122.32
17	N 1° 18' W	102.35
18	N 18° 17' E	92.19
19	N 39° 37' E	122.7
20	N 10° 11' W	95.72
21	West	507.30 ML

6N 34 20