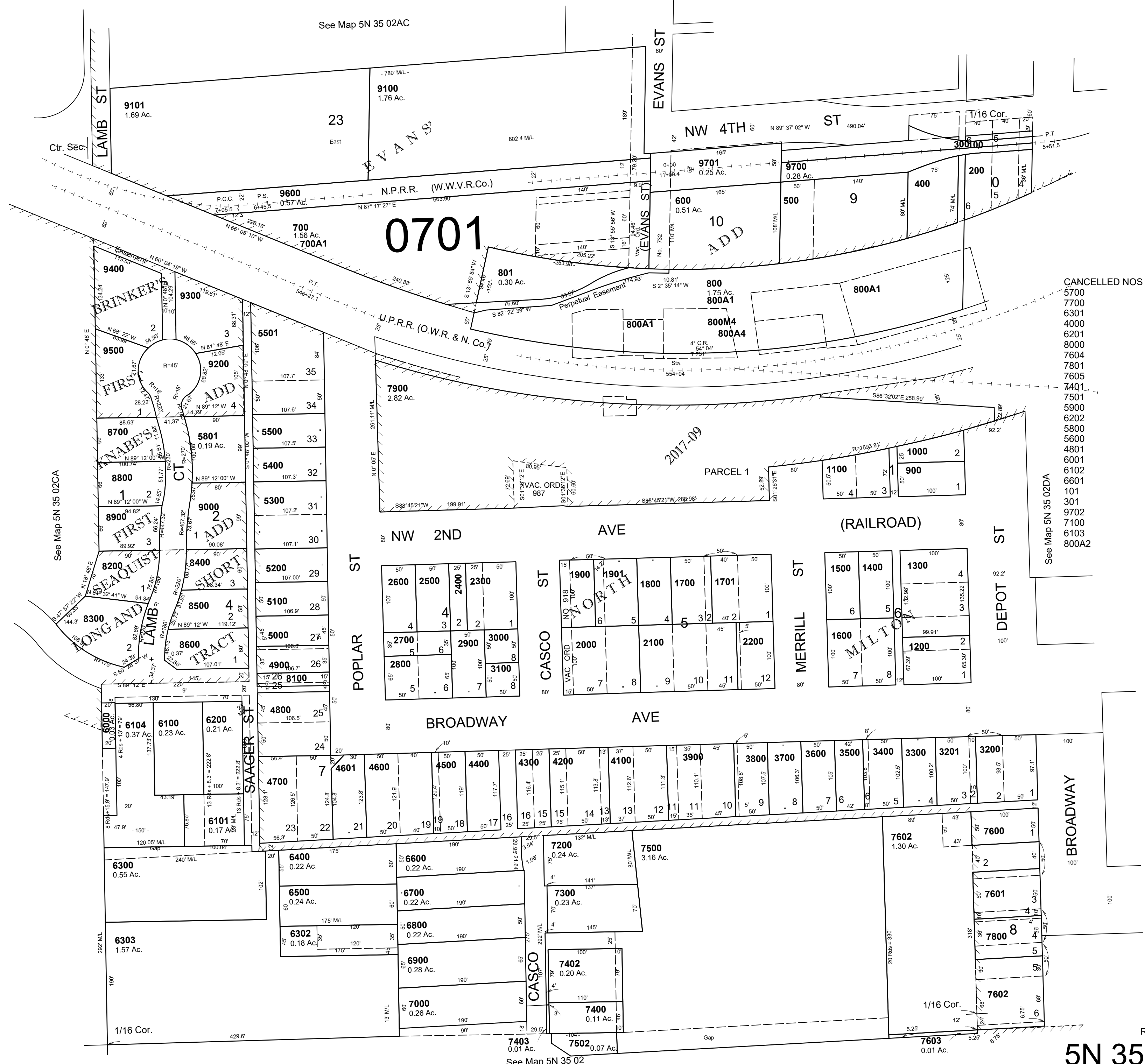


This map was prepared for Assessment & Taxation purposes only and was NOT prepared nor is it suitable for legal, engineering or surveying purposes.

NW 1/4 SE 1/4 SEC 2 T5N R35E WM UMATILLA COUNTY

5N 35 02DB
AERIAL PHOTO NO. 11P-82

SCALE 1"=100'



- CANCELLED NOS
- 5700
 - 7700
 - 6301
 - 4000
 - 6201
 - 8000
 - 7604
 - 7801
 - 7605
 - 7401
 - 7501
 - 5900
 - 6202
 - 5800
 - 5600
 - 4801
 - 6001
 - 6102
 - 6601
 - 101
 - 301
 - 9702
 - 7100
 - 6103
 - 800A2

See Map 5N 35 02

Revised: 09-09-2021
5N 35 02DB