

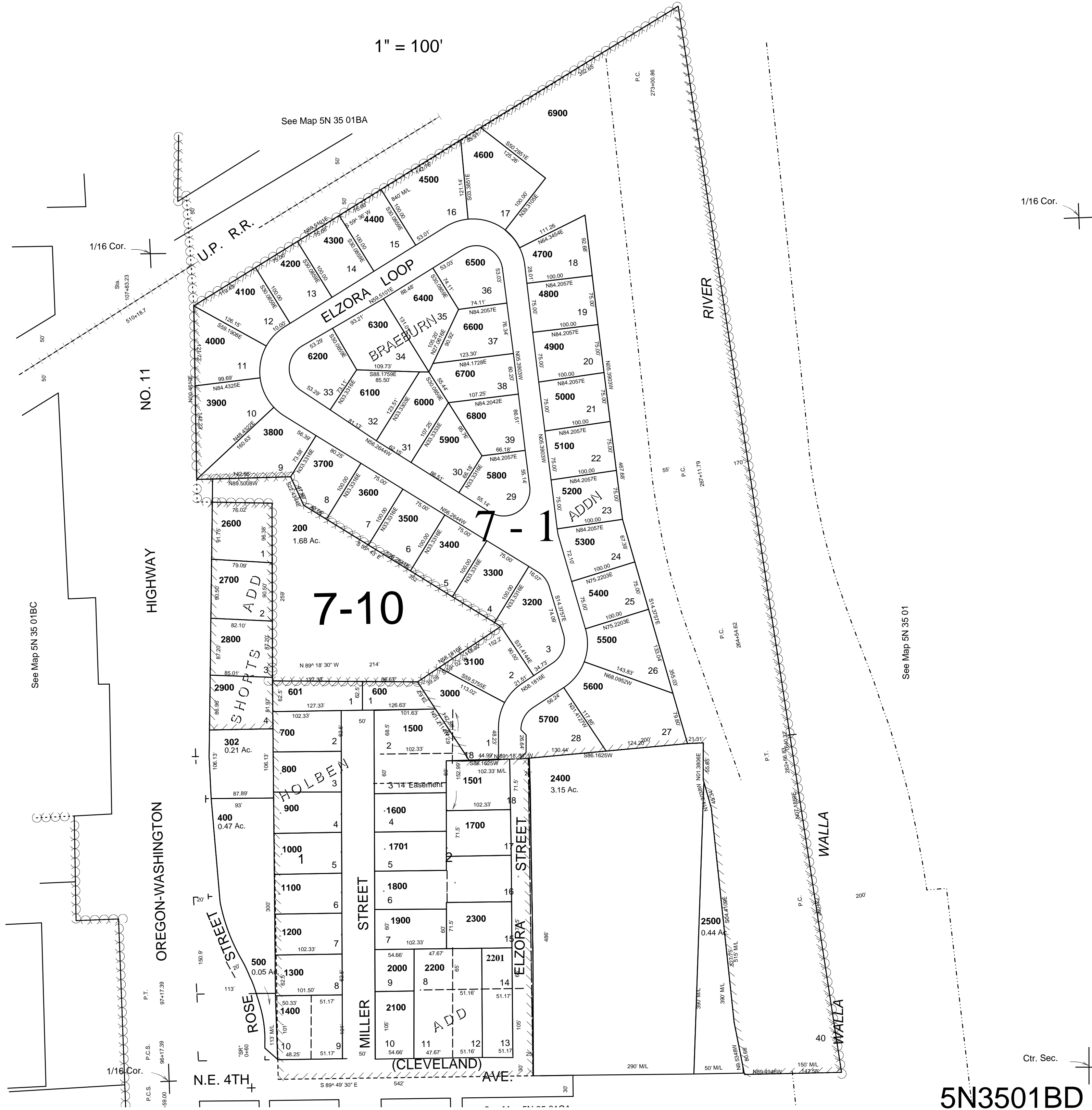
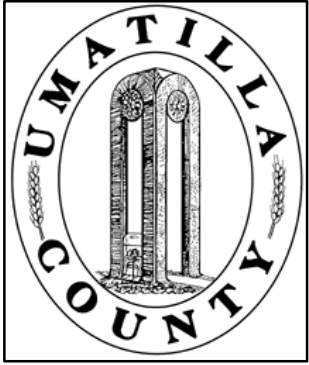
This map was prepared for Assessment & Taxation purposes only & has NOT been prepared for legal, engineering or surveying purposes.

SE 1/4 NW 1/4 SEC 1 T5N R 35E WM UMATILLA COUNTY, OR

5/23/07

5N3501BD

1" = 100'



1/16 Cor.

Ctr. Sec.

5N3501BD