

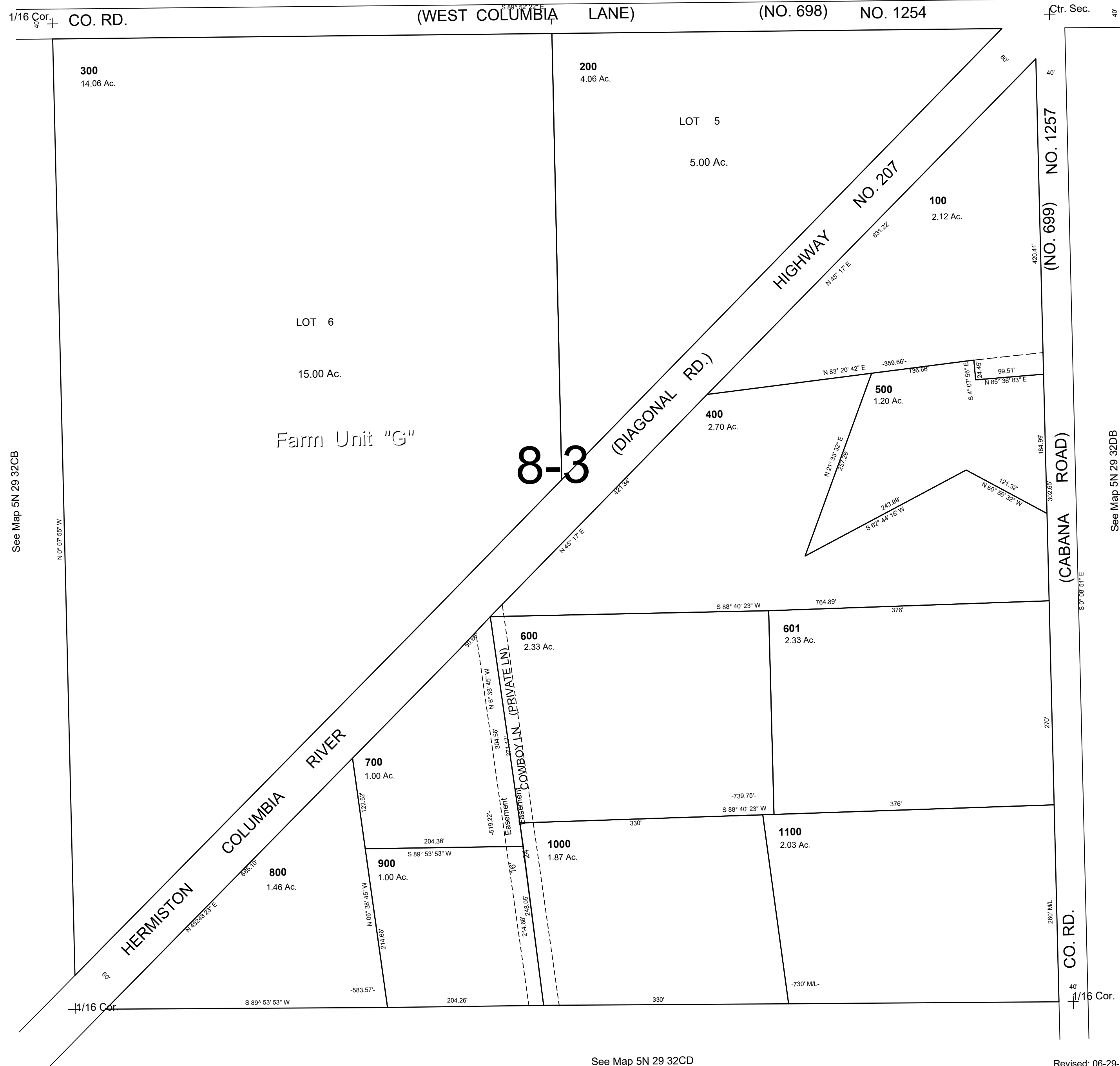
This map was prepared for Assessment & Taxation purposes only and was NOT prepared nor is it suitable for legal, engineering or surveying purposes.

NE1/4 SW1/4 SEC 32 T5N R29E WM
UMATILLA COUNTY
SCALE 1"=100'

5N 29 32CA

AERIAL PHOTO NO. 1P-100

See Map 5N 29 32



5N 29 32CA