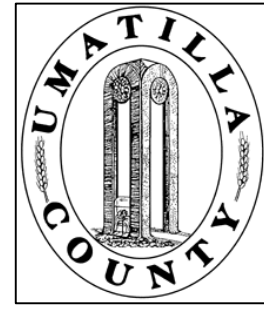


This map was prepared for Assessment & Taxation purposes only and was NOT prepared nor is it suitable for legal, engineering or surveying purposes.



# SW1/4 SE1/4 SEC 29 T5N R29E WM UMATILLA COUNTY

## 5N2929DC

SCALE: 1" = 100'

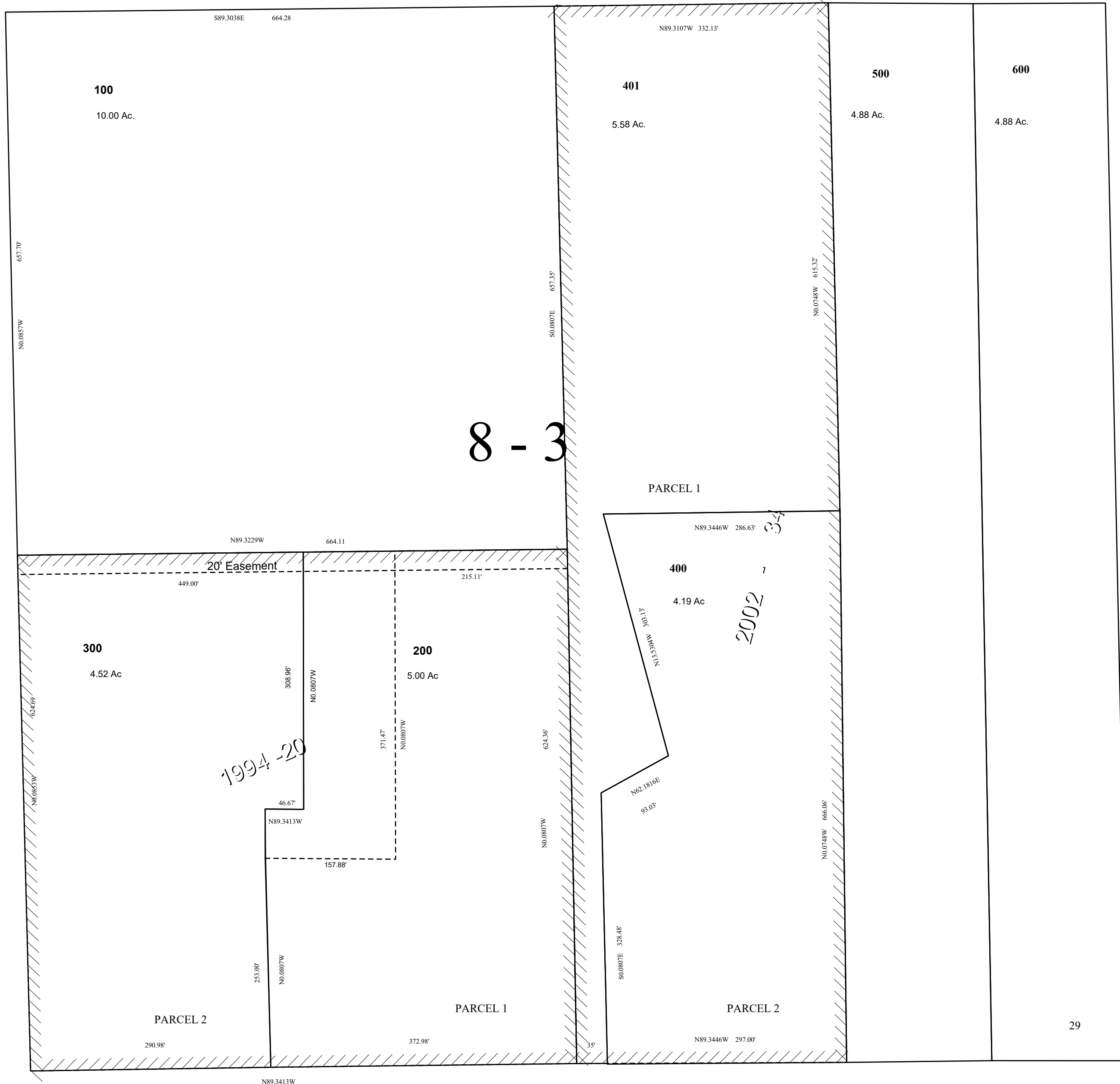
SEE MAP 5N2929DB

1/16 COR.

1/16 COR.

SEE MAP 5N29C

SEE MAP 5N29C



S1/4 SEC. 29

SEE MAP 5N29C

32

4/21/03

## 5N2929DC