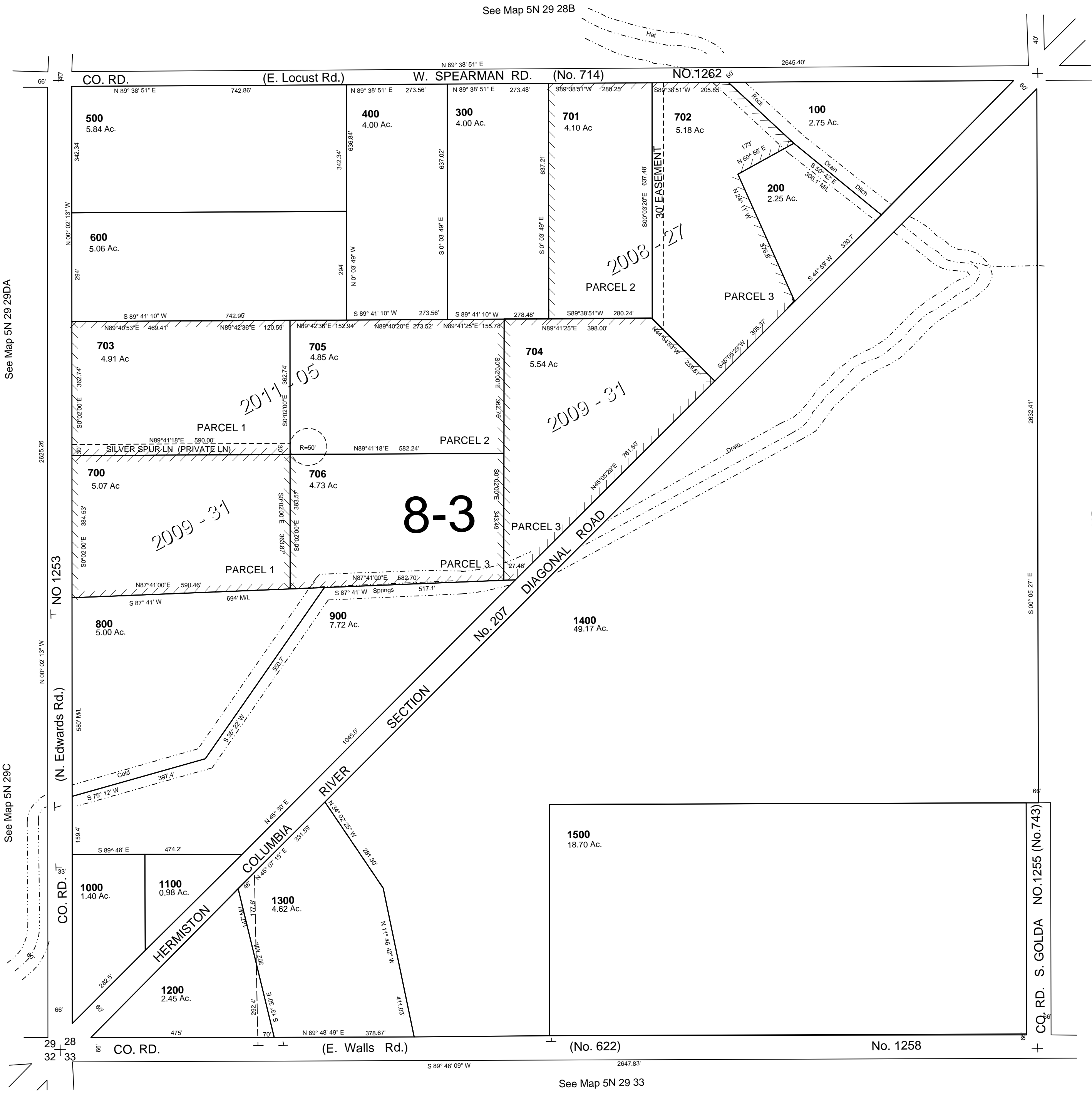


This map was prepared for Assessment & Taxation purposes only and was NOT prepared nor is it suitable for legal, engineering or surveying purposes.

SW 1/4 SEC 28 T5N R29E WM
UMATILLA COUNTY
SCALE 1"=200'

5N 29 28C



See Map 5N 29 29DA

See Map 5N 29C

See Map 5N 29 28B

See Map 5N 29 28D

See Map 5N 29 33

REVISED: 3/21/11

5N 29 28C