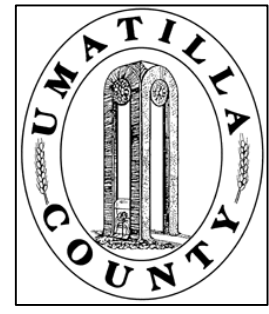


This map was prepared for Assessment & Taxation purposes only and was NOT prepared nor is it suitable for legal, engineering or surveying purposes.

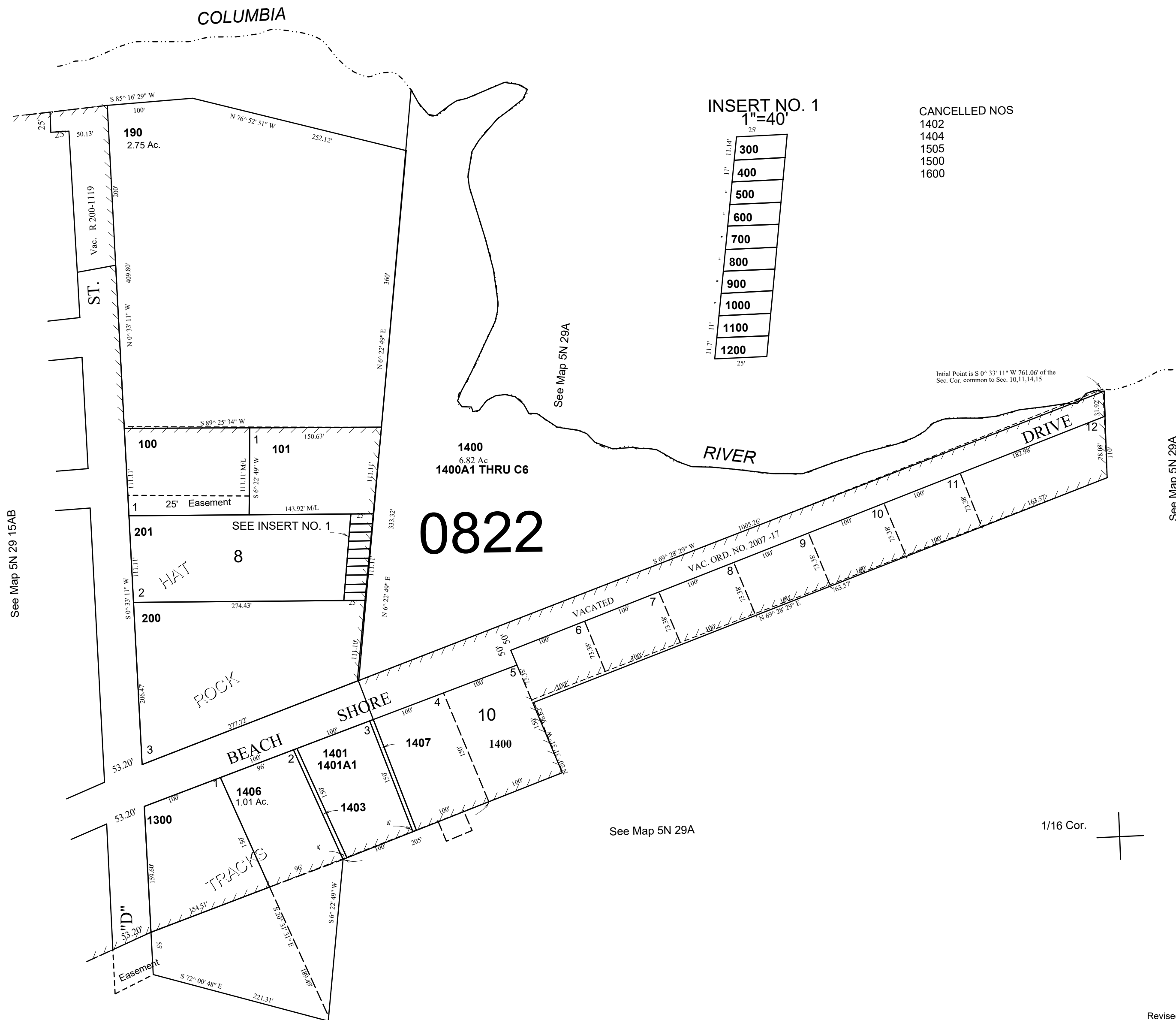


NE 1/4 NE 1/4 SEC 15 T 5N R 29E WM
UMATILLA COUNTY

5N2915AA

Aerial Photo No. NZ-1P-64

SCALE: 1" = 100'



INSERT NO. 1

1"=40'

300
400
500
600
700
800
900
1000
1100
1200

CANCELLED NOS
1402
1404
1505
1500
1600

Initial Point is S 0° 33' 11" W 761.061 of the Sec. Cor. common to Sec. 10, 11, 14, 15

See Map 5N 29 15AB

See Map 5N 29A

See Map 5N 29A

See Map 5N 29A

1/16 Cor.

Revised: 05-26-2020

5N2915AA