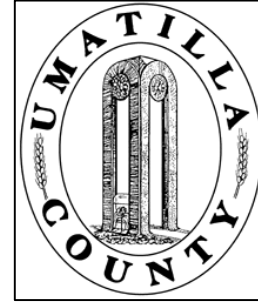


This map was prepared for Assessment & Taxation purposes only and was NOT prepared nor is it suitable for legal, engineering or surveying purposes.



SW 1/4 SEC 34 T5N R28E WM UMATILLA COUNTY

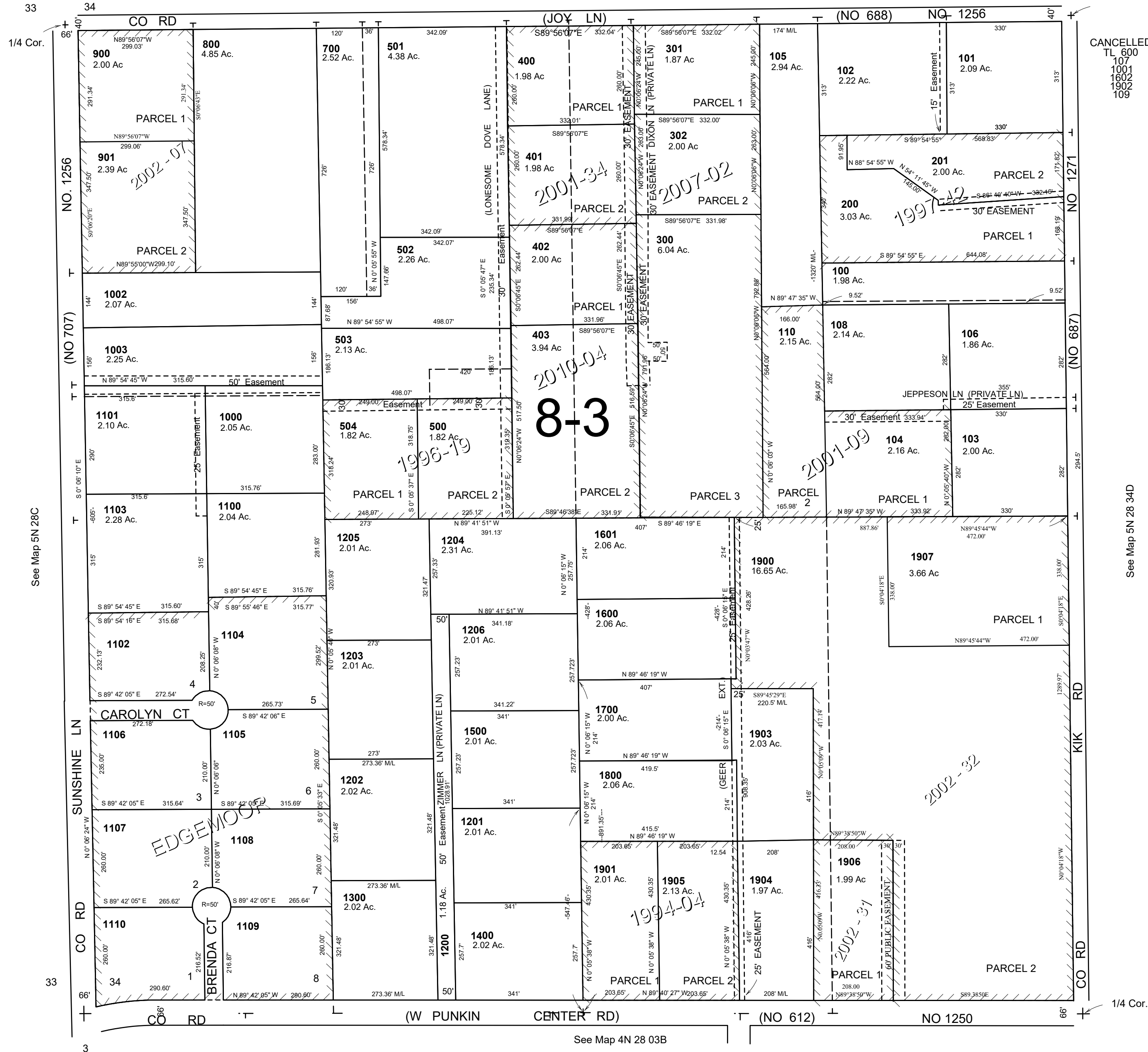
SCALE: 1" = 200

5N 28 34C

Aerial Photo No. NZ-1P-104

See Map 5N 28 34B

Cntr. Sec.



CANCELLED
TL 600
1001
1602
1902
109

See Map 5N 28C

See Map 5N 28 34D

See Map 4N 28 03B

Revised:11-12-19

5N 28 34C