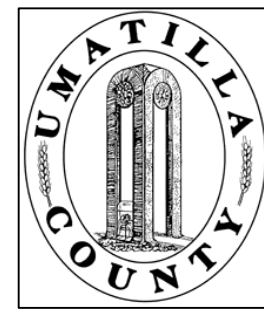


This map was prepared for Assessment & Taxation purposes only and was NOT prepared nor is it suitable for legal, engineering or surveying purposes.

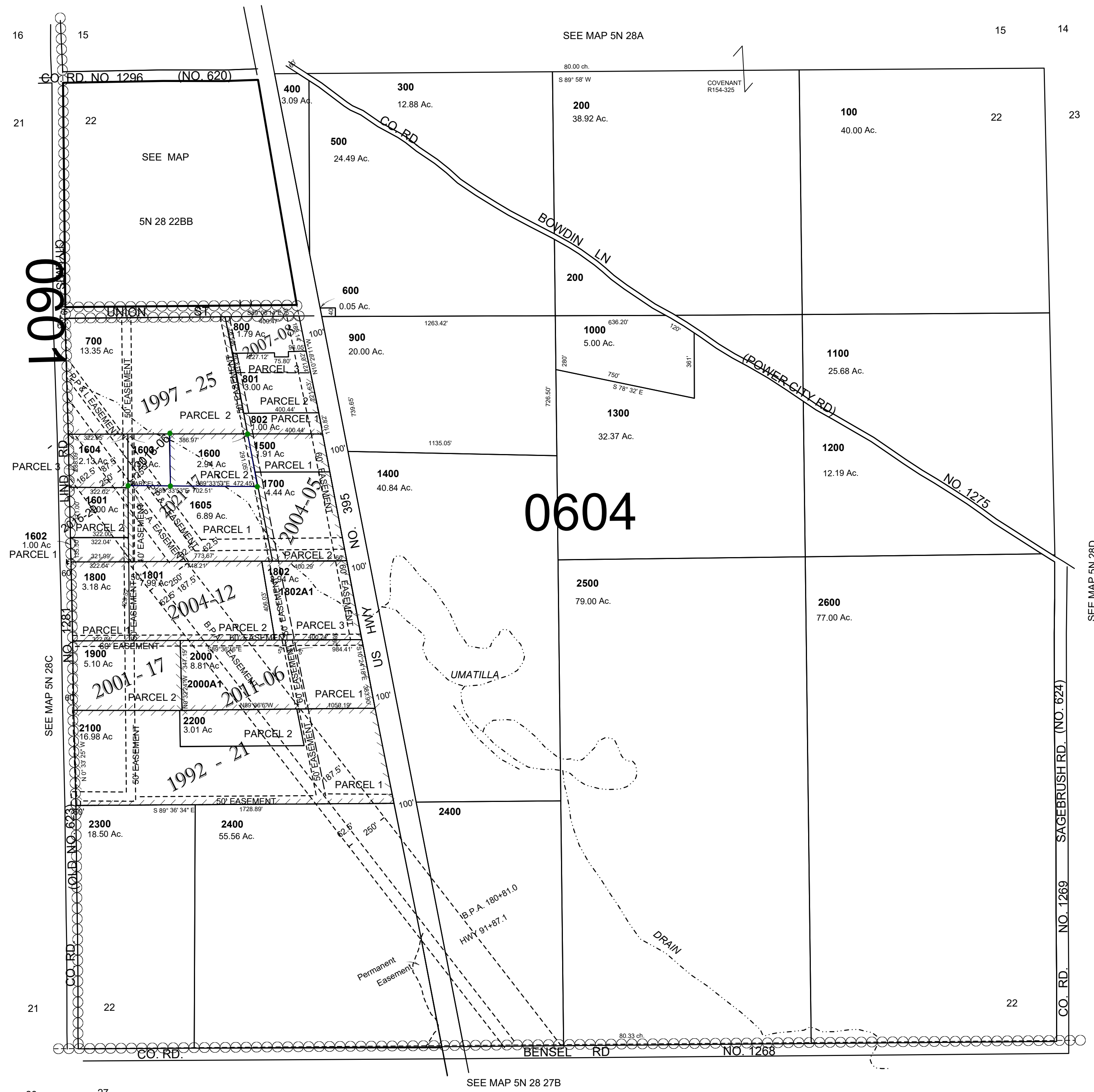


# SEC 22 T 5N R 28E WM UMATILLA COUNTY

SCALE: 1" = 400'

## 5N 28 22

AERIAL PHOTO NO. NZ-1P-101-105



Revised: 06-30-2021

## 5N28 22