

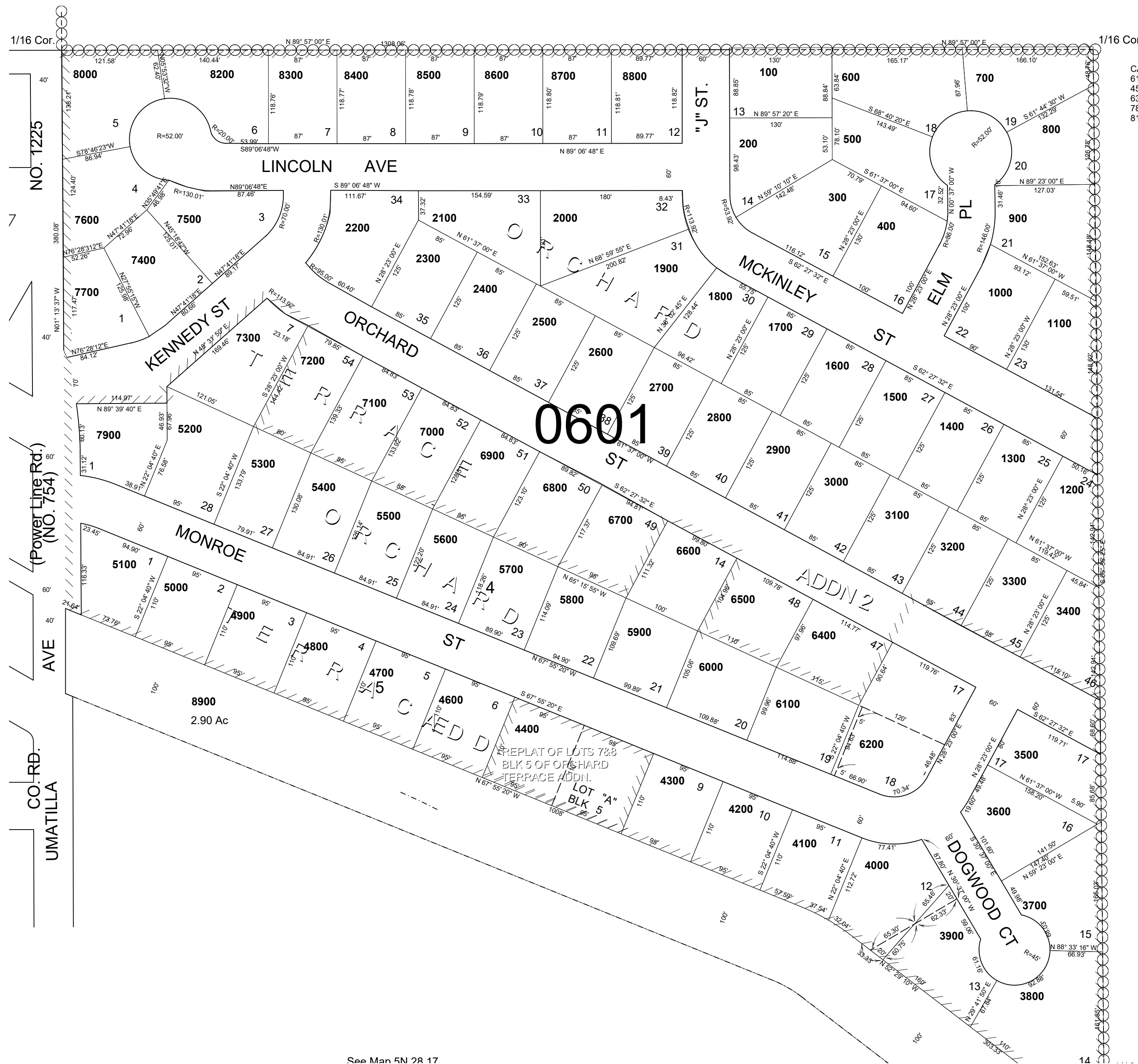
This map was prepared for Assessment & Taxation purposes only and was NOT prepared nor is it suitable for legal, engineering or surveying purposes.

SE1/4 SW1/4 SEC 17 T5N R28E WM UMATILLA COUNTY SCALE 1"=100'

5N 28 17CD

AERIAL PHOTO NO. 1P-57

See Map 5N 28 17CA



CANCELLED NOS
6101
4500
6300
7800
8100

See Map 5N 28 17

See Map 5N 28 17

Revised:01-14-19

5N 28 17CD